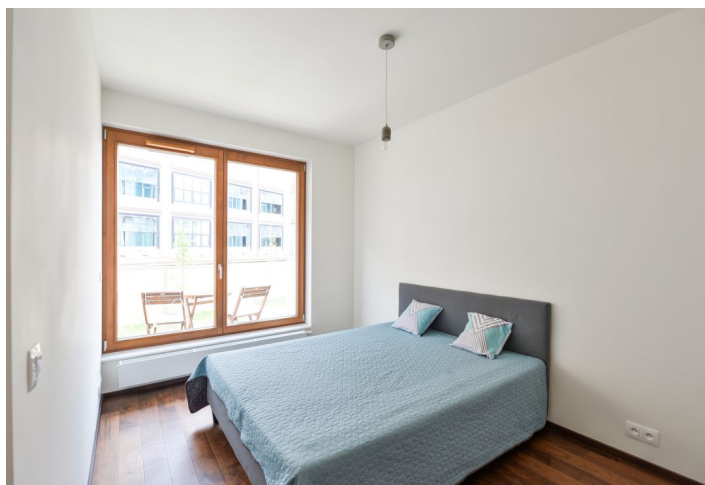




Apartment One-bedroom (2+kk)

Rented

48 m², Praha 5, Košíře, Naskové





Apartment One-bedroom (2+kk)

Rented

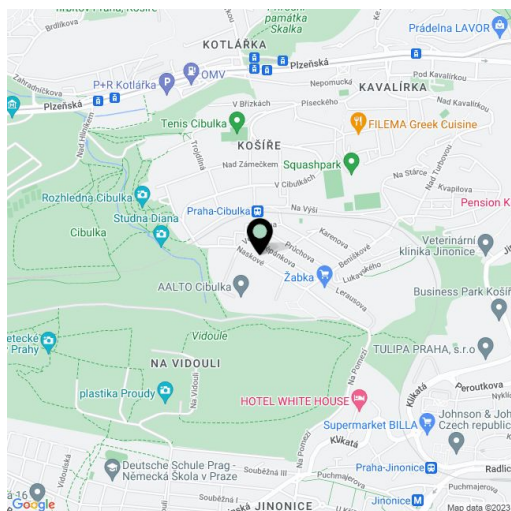
48 m², Praha 5, Košíře, Naskové

Total area	58 m ²
Floor area*	48 m ²
Balcony	10 m ²
Parking	Garage parking.
Garage	Yes
Cellar	Yes
PENB	G
Reference number	35706
Available from	Immediately

Benefiting from a wonderful green location, this is a brand new furnished 1-bedroom apartment with a balcony, on the first floor in a newly built residential project with underground parking and a landscaped courtyard with water features. Located on the very edge of the Vidoule natural preserve, near the Cibulka forest park, in a quiet residential area within easy reach of full amenities and services, close to Jinonice metro station, and within quick reach of the Anděl / Nový Smíchov commercial center. Conveniently located for the German School.

The interior features a living room with a fully fitted open plan kitchen, a dining area and a **balcony** facing the green courtyard, a partially separated bedroom, a shower room with a toilet, and an entrance hall.

Solid wood floors, tiles, security entry door, oversized windows, central heating, Nolte kitchen, dishwasher, induction cooktop, garden furniture, video entry phone, **cellar**, lift. A **garage parking** space is included. Monthly deposit for service charges, water and heating approx.CZK 3000. Electricity is billed separately.



* Area of the unit according to the Civil Code. The area consists of the sum total area of the entire unit bounded by perimeter walls.