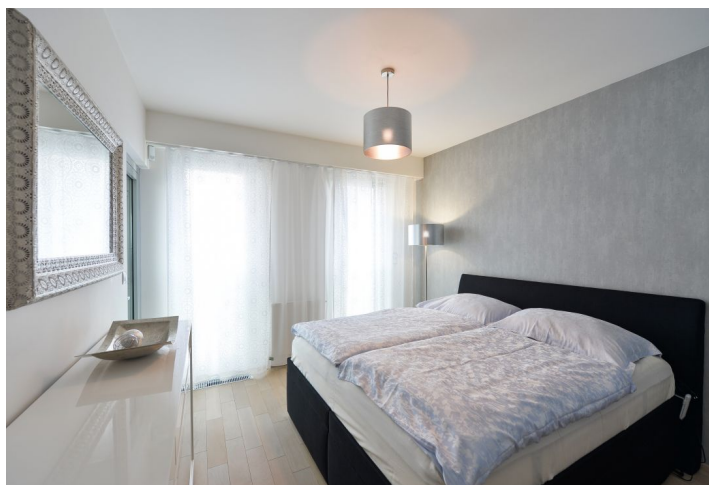




Apartment One-bedroom (2+kk)

Rented

60 m², Prague 3, Žižkov, Olšanská





Apartment One-bedroom (2+kk)

Rented

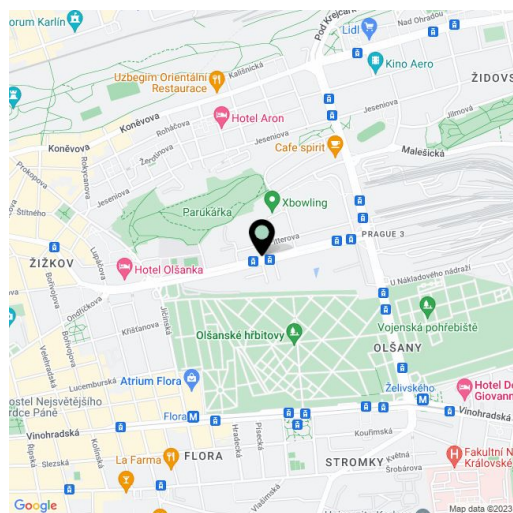
60 m², Prague 3, Žižkov, Olšanská

Total area	60 m ²
Parking	Garage parking.
Garage	Yes
Cellar	Yes
PENB	G
Reference number	35709
Available from	Immediately

Boasting beautiful panoramic views of Prague including the Prague Castle and Petřín Hill, this air-conditioned 1-bedroom apartment with a winter garden is situated on the 15th floor of the modern Garden Towers residential project with a reception, a landscaped courtyard, and underground parking. Located in close vicinity of Parukářka Park, with full amenities within easy reach (Flora shopping mall, Olšanská clinic, post office, sports facilities) and quick access to the city center (multiple tram lines, nearby Želivského and Flora metro stations).

The interior features a living room with a fully fitted open plan kitchen, a **winter garden** with a dining area, a bedroom with access to the winter garden, a bathroom (bathtub with a shower screen, toilet), a storage room, and an entrance hall. The tenants can also use a huge **shared terrace** on the fifth floor of the building.

High standard equipment and finishes, **air-conditioning**, **hardwood floors**, tiles, security entry door, French windows, automatic external blinds, high quality sofabed, electric adjustable bed, central heating, washing machine, dishwasher, induction cooktop, microwave oven, kitchenware, iron and ironing board, bed linen, TV, satellite reception, video entry phone, alarm system, **cellar**, chip entry to the building. An underground **garage parking space** is included. A separate **garage** is available at CZK 3000/month. Service charges and utilities are billed separately.



* Area of the unit according to the Civil Code. The area consists of the sum total area of the entire unit bounded by perimeter walls.