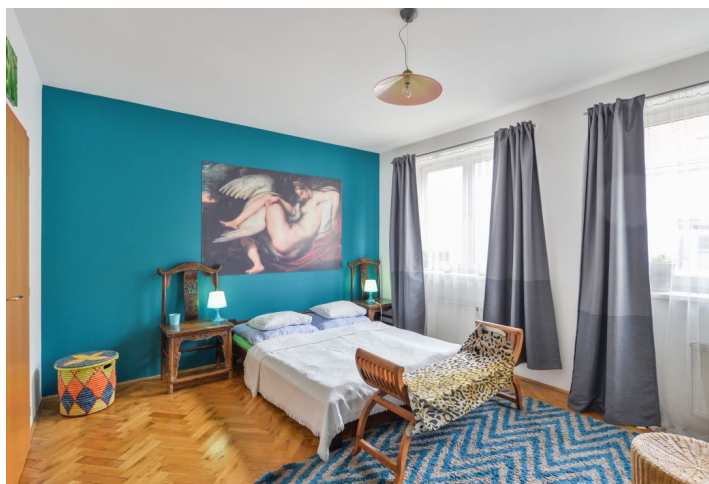




## Apartment Studio (1+kk)

Rented

34 m<sup>2</sup>, Praha 8, Libeň, Na Žertvách





## Apartment Studio (1+kk)

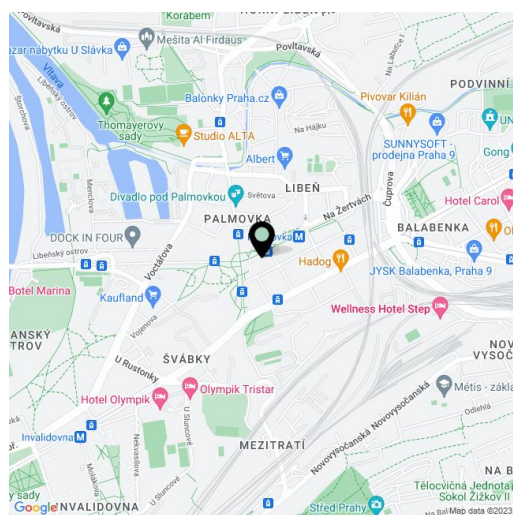
**Rented**34 m<sup>2</sup>, Praha 8, Libeň, Na Žertvách

Total area	34 m <sup>2</sup>
Parking	Garage parking.
Garage	Yes
Cellar	-
PENB	G
Reference number	35742
Available from	Immediately

This is a furnished studio apartment on the 4th floor in a contemporary building with a lift and underground parking. Located just a minute walk from Palmovka metro station and tram stops, in a vibrant location with full amenities within easy reach and with very quick access to the city center.

The apartment features a living room / bedroom with a dining area and a fully fitted open plan kitchen, a bathroom including a bathtub and a toilet, and an entrance hall.

**Solid wood parquet floors**, tiles, security entry door, central heating, washing machine. A **garage parking** space is included. Monthly deposit for service charges, water and heating: CZK 2000. Electricity will be transferred to the tenant.



\* Area of the unit according to the Civil Code. The area consists of the sum total area of the entire unit bounded by perimeter walls.