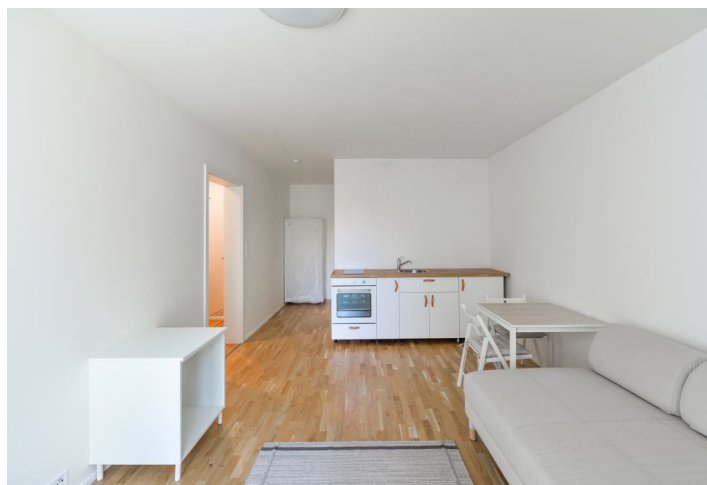
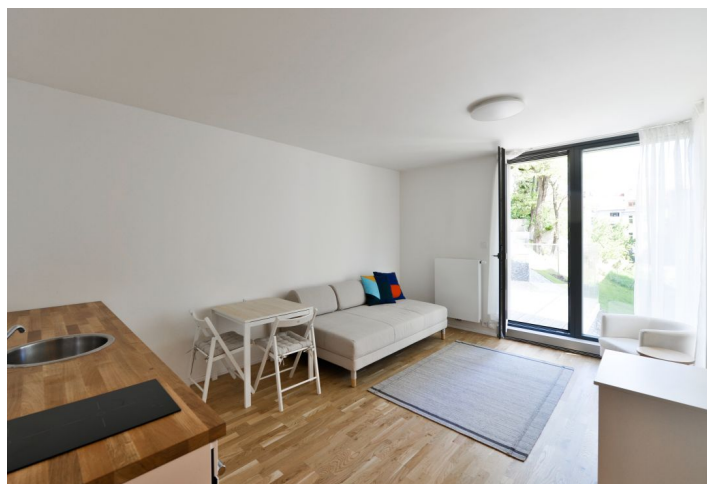
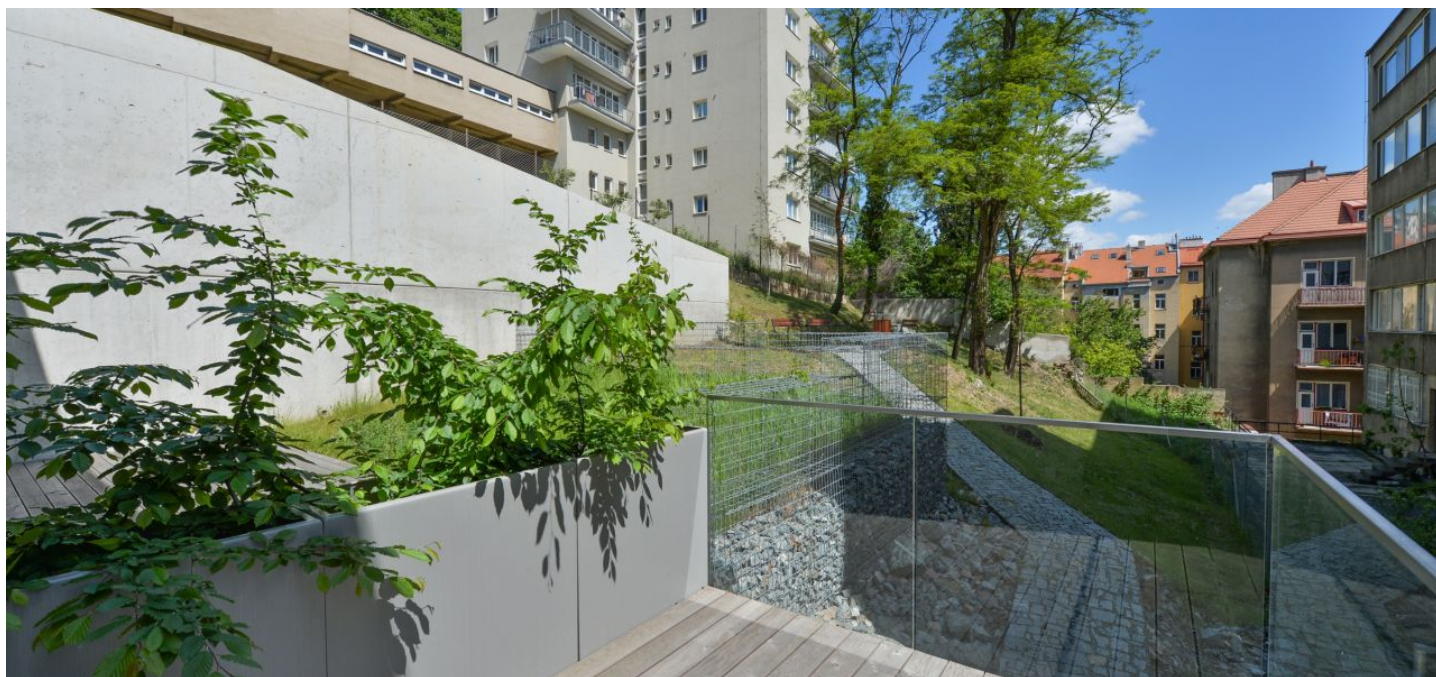




## Apartment Studio (1+kk)

30 m<sup>2</sup>, Prague 5, Smíchov, Holečkova

Rented





## Apartment Studio (1+kk)

Rented

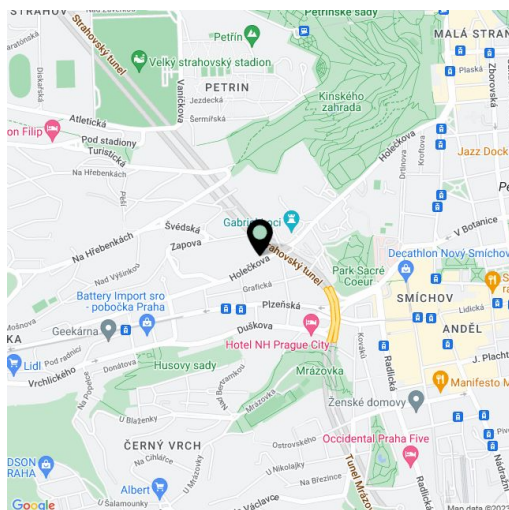
30 m<sup>2</sup>, Prague 5, Smíchov, Holečkova

Total area	37 m <sup>2</sup>
Floor area*	30 m <sup>2</sup>
Terrace	7 m <sup>2</sup>
Parking	-
Cellar	-
PENB	B
Reference number	35786
Available from	Immediately

This brand new furnished studio apartment with a terrace is on the 2nd floor of the Palata Residence - a newly constructed building with a lift and a private garden with relaxation zones. Situated in a quiet street in Smíchov, Prague 5, within easy reach of the Sacre Coeur park and the Kinských Gardens. Location with very quick access to full amenities and the city center, two short tram stops from the Anděl metro station, the Nový Smíchov shopping and entertainment center and the Na Knížecí Bus Terminal.

The interior includes a living room / bedroom with a fully fitted open plan kitchen and access to the **terrace** facing the garden, a shower room with a toilet, and an entrance hall.

**Hardwood floor**, tiles, security entry door, wooden Euro windows, automatic external blinds, central heating, video entry phone, lift, camera system, chip entry to the building. Deposit for service charges and utilities is billed separately.



\* Area of the unit according to the Civil Code. The area consists of the sum total area of the entire unit bounded by perimeter walls.