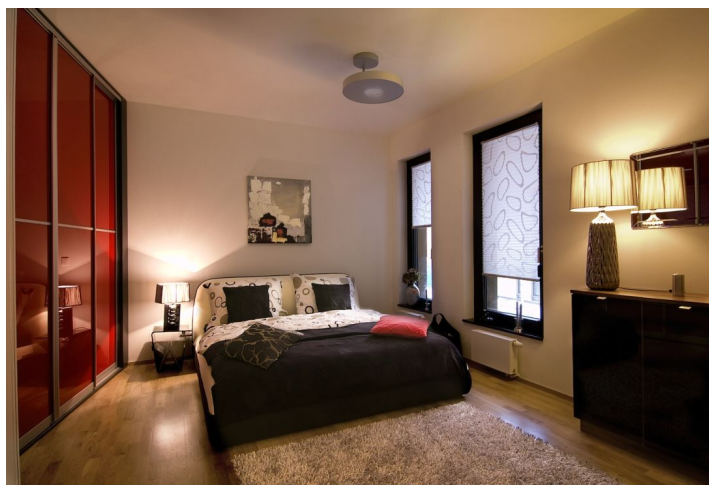




## Apartment Two-bedroom (3+kk)

Sold

81 m<sup>2</sup>, Prague 4, Michle, Baarova



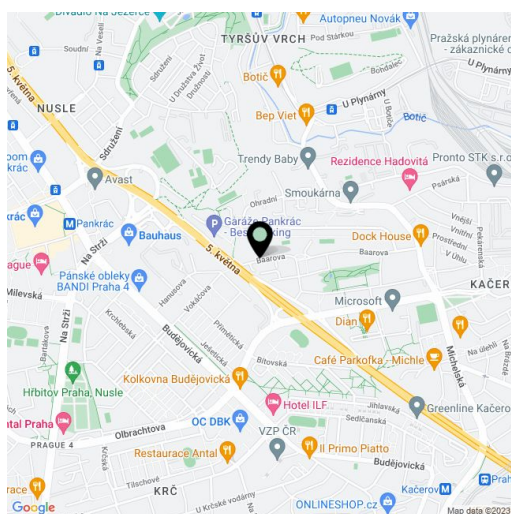


## Apartment Two-bedroom (3+kk)

**Sold**81 m<sup>2</sup>, Prague 4, Michle, Baarova

<b>Total area</b>	81 m <sup>2</sup>
<b>Parking</b>	400 000
<b>Garage</b>	Yes
<b>Cellar</b>	Yes
<b>PENB</b>	G
<b>Reference number</b>	358

Apartment on the 1st floor of building C in a new residential project. The project is urbanistically connected to the commercial BB Centrum through a newly created park. The apartment offers living room with dining area, kitchen corner (preparation) and balcony, master bedroom with walk-in closet and balcony, 2nd bedroom, bathroom, guest toilet and utility room. The apartment features security entrance door Lignis with stainless steel fittings. Wooden floors come either in Ash or Oak. Furnishing standards offer two variants – classic and modern. Bathroom fittings by Laufen and Grohe, tiling by La Faenza / Imola Ceramica. The residence with 24hour reception offers modern lifestyle in an area with full range of amenities. Interior 75.9 m<sup>2</sup>, balconies 2.5 + 3 m<sup>2</sup>, cellar 6.1 m<sup>2</sup> and garage parking for one car included (price including the VAT). The photos come from show apartment.



\* Area of the unit according to the Civil Code. The area consists of the sum total area of the entire unit bounded by perimeter walls.



## Apartment Two-bedroom (3+kk)

Sold

81 m<sup>2</sup>, Prague 4, Michle, Baarova

