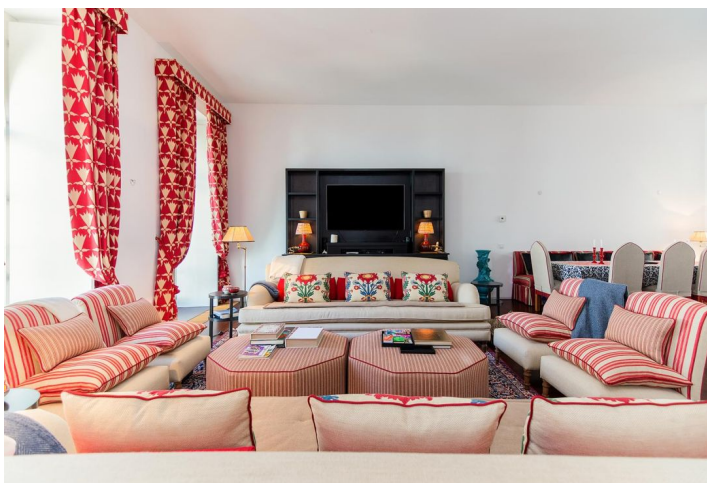




House Seven-bedroom (8+kk)

€ 4 800 000 | CZK 120 120 000

692 m², Lisboa, Área Metropolitana de Lisboa, Castelo





House Seven-bedroom (8+kk)

€ 4 800 000 | CZK 120 120 000

692 m², Lisboa, Área Metropolitana de Lisboa, Castelo

Plot	763 m²
Parking	Yes
Garage	Yes
Cellar	-
PENB	G
Reference number	35805

This reconstructed former palace close to St. George's Castle offers a total of 7 bedrooms with en-suite bathrooms and a social area. The interior of the house boasts charming preserved historic elements as well as modern additions.

On the ground floor there is an entrance hall and a private **garage for 3 cars** with direct access to the villa. The first floor consists of a day zone with an enormous living room with a terrace, kitchen, and dining room. The terrace offers **pleasant views of the courtyard**. Seven spacious bedrooms with en-suite bathrooms are spread out over the 2nd and 3rd floors.

The period facade and elegant entrance hall will remind you of the villa's history, but the interior has been redesigned in a completely **modern style**. Facilities include an **elevator**, a security entrance door, or a video doorman.

With a prestigious address in the very heart of the capital city with its typical narrow lanes, the villa is within walking distance of many of Lisbon's famous monuments and is easily accessible by public transport. Walk around the nearby St. George's Castle to enjoy unparalleled panoramic views of Lisbon and the Tagus River.

Interior: 692 sq. m., plot: 763 sq. m. The property is being sold by the Porta da Frenta real estate agency.

