



## Apartment Two-bedroom (3+kk)

Sold

85 m<sup>2</sup>, Prague 4, Podolí, Jeremenkova





## Apartment Two-bedroom (3+kk)

**Sold**85 m<sup>2</sup>, Prague 4, Podolí, Jeremenkova

Total area	85 m <sup>2</sup>
Parking	-
Cellar	Yes
Service price	3 030 CZK monthly
PENB	G
Reference number	35824

This bright, quiet attic apartment with views of the surrounding greenery is located in a traditional residential area with a high standard of living on the border of Braník and Podolí, in an easily accessible neighborhood that is home to several parks.

The layout of the apartment on the 4th (topmost) floor is divided into a large kitchen with a sitting area, a living room, a bedroom, a bathroom (with a bathtub and washing machine connection), a separate toilet, and an entrance hall.

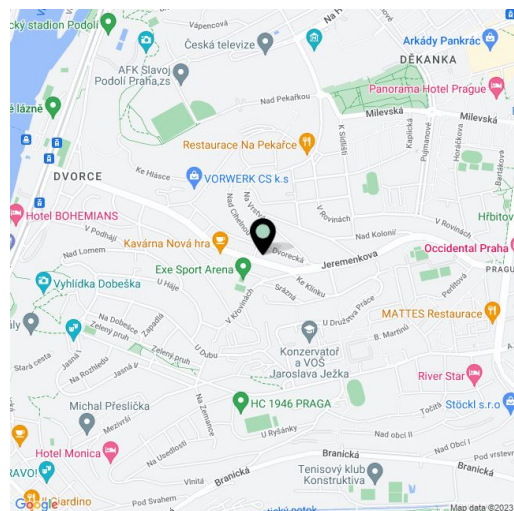
The attic apartment, situated in a brick apartment building without an elevator, was created about 10 years ago. Facilities include **parquet floors** and tiles, classic plastic windows, and wooden skylights.

In the immediate vicinity, there is an elementary school, a grocery store, and a cafe. Within walking distance is also a kindergarten, restaurant, or health clinic. The Budějovická metro station is a 5-minute bus ride away, and a bus stop is 50 meters from the building. The surroundings offer a wide range of sports opportunities -the **Podolí swimming stadium**, a **bike trail** along the Vltava River, outdoor activities in **Žluté lázně**, and a **golf course** is just 7 minutes away by car. If you are interested in art and culture, the legendary **Dobeška Theater** is located nearby.

Interior 84.59 m<sup>2</sup>, cellar 2.73 m<sup>2</sup>.

Cooperative ownership.

In addition to regular property viewings, we also offer **real-time video viewings** via WhatsApp, FaceTime, Messenger, Skype, and other apps.



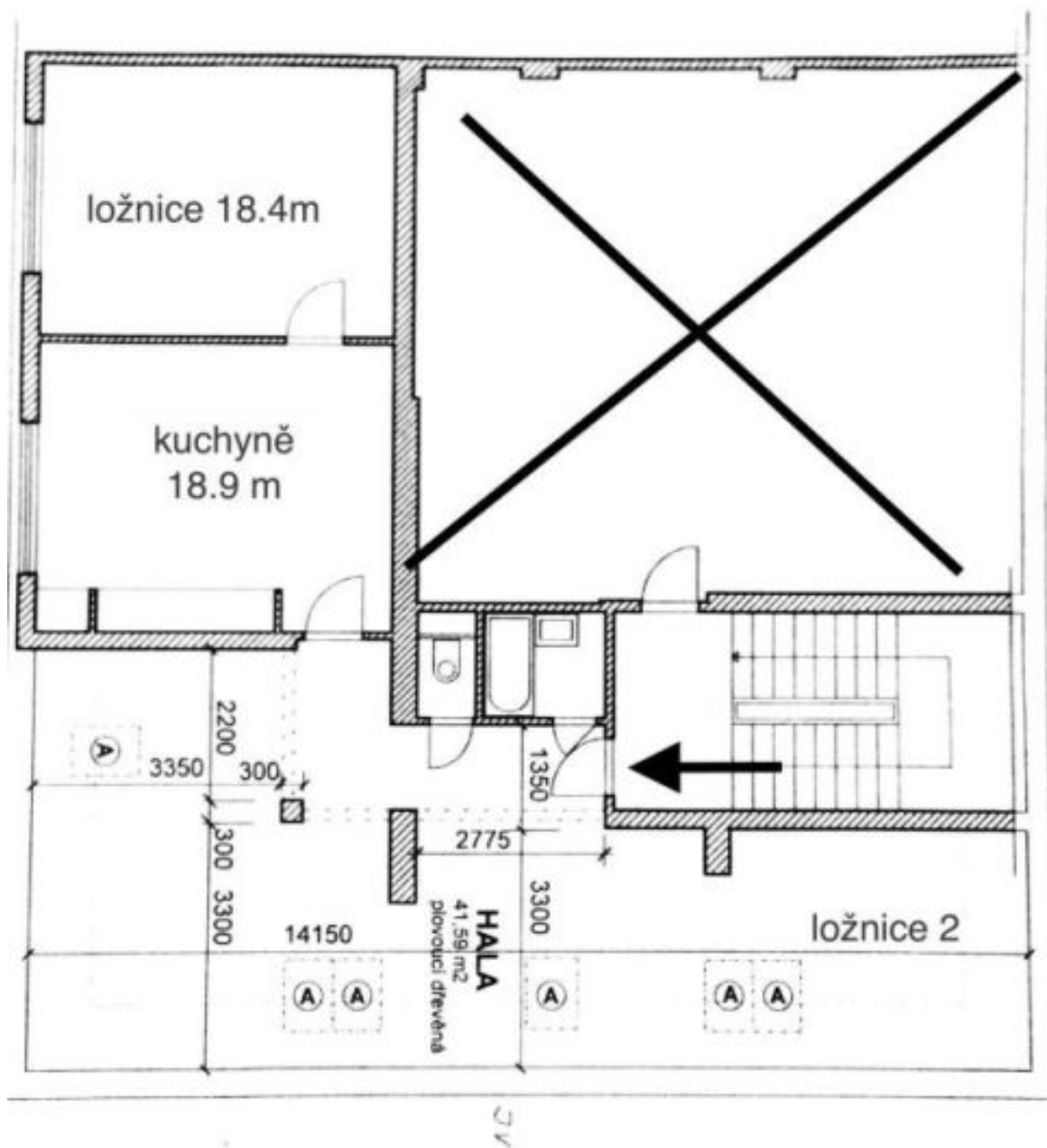
\* Area of the unit according to the Civil Code. The area consists of the sum total area of the entire unit bounded by perimeter walls.



## Apartment Two-bedroom (3+kk)

Sold

85 m<sup>2</sup>, Prague 4, Podolí, Jeremenkova



Scanned by CamScanner