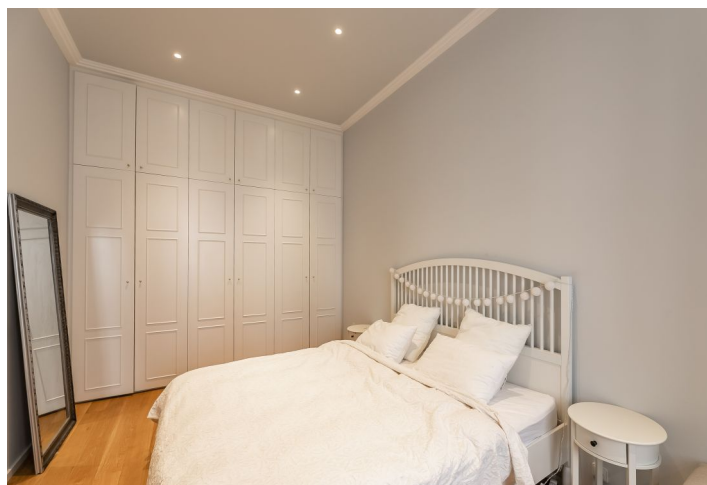




## Apartment One-bedroom (2+1)

Sold

69 m<sup>2</sup>, Prague 5, Smíchov, Kroftova





## Apartment One-bedroom (2+1)

**Sold**69 m<sup>2</sup>, Prague 5, Smíchov, Kroftova

Total area	69 m <sup>2</sup>
Parking	-
Cellar	Yes
PENB	E
Reference number	35861

This nicely refurbished classic apartment with high ceilings and double-wing doors is located on the 1st floor of a renovated Art Nouveau building with an elevator that stands on a quiet street in Prague Smíchov next to the Kinský Gardens.

The living room and bedroom face west towards the side street; the separate kitchen with a dining room has a window facing the courtyard and a nice **view of the greenery**. There is also an entrance hall and airy bathroom with a bathtub, sink, toilet, and two windows.

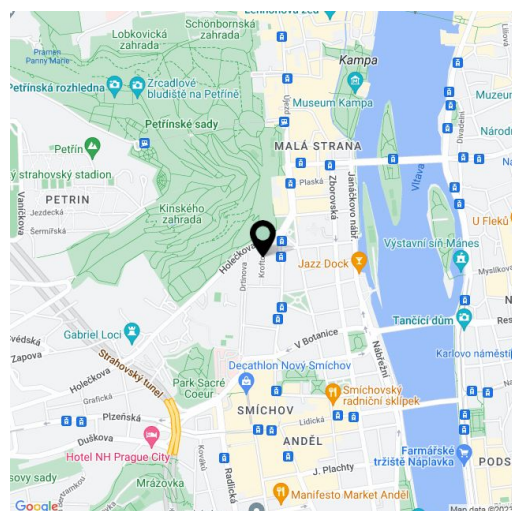
The apartment was **completely renovated** in 2018. The **cozy interior** illuminated by **wooden casement windows** is equipped with no-threshold **oak floors** throughout, original **double-wing cassette doors**, built-in wardrobes in the bedroom, a freestanding bathtub, a stylish kitchen with built-in appliances, and security entrance doors. Heating is by an electric boiler.

The building is located near the **Kinský Gardens**, **Petřín Gardens**, **Janáček Embankment**, and **Kampa Island**. The Švandovo Theater is a few steps away. It is also close to restaurants, cafes, and shops. The **Anděl** area and metro station and the Nový Smíchov shopping and entertainment center are a 5-minute tram ride away.

Interior 69.49 m<sup>2</sup>, cellar 6.60 m<sup>2</sup>.

The apartment is rented until October 31st, 2020.

In addition to regular property viewings, we also offer real-time video viewings via WhatsApp, FaceTime, Messenger, Skype, and other apps.



\* Area of the unit according to the Civil Code. The area consists of the sum total area of the entire unit bounded by perimeter walls.



## Apartment One-bedroom (2+1)

69 m<sup>2</sup>, Prague 5, Smíchov, Kroftova

Sold

