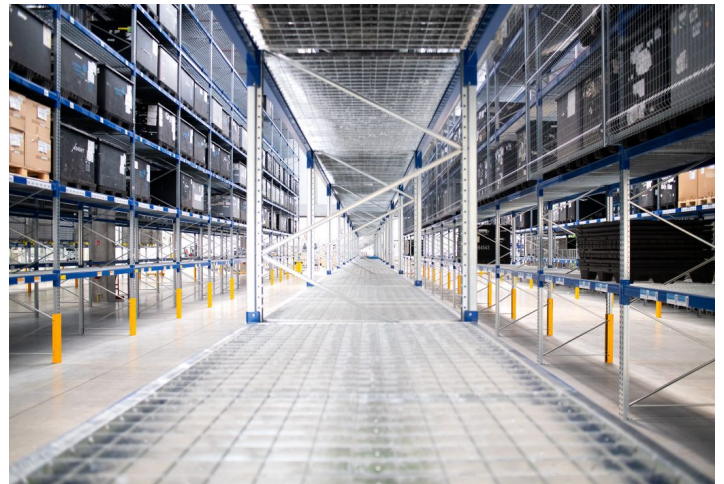




## Logistic park

23 981 m<sup>2</sup>, Rychnov nad Kněžnou, Solnice, Průmyslová

Ask for price





## Logistic park

[Ask for price](#)23 981 m<sup>2</sup>, Rychnov nad Kněžnou, Solnice, Průmyslová

UNIT	AVAILABLE AREA	SERVICES	PARKING	MONTHLY RENT
<b>Building KV4 - planned</b>	13 143 m <sup>2</sup>	0 EUR monthly per m <sup>2</sup>	Yes	Ask for price
<b>Building KV2 - planned</b>	3 553 m <sup>2</sup>	0 EUR monthly per m <sup>2</sup>	Yes	Ask for price
<b>Building KV3 - available</b>	1 819 - 7 258 m <sup>2</sup>	0 EUR monthly per m <sup>2</sup>	Yes	Ask for price





## Logistic park

23 981 m<sup>2</sup>, Rychnov nad Kněžnou, Solnice, Průmyslová

**Ask for price**

<b>Total area</b>	23 981 m <sup>2</sup>
<b>Available area for rent</b>	23 981 m <sup>2</sup>
<b>Ceiling height</b>	10.5 m
<b>Floor loading capacity</b>	5 t/m <sup>2</sup>
<b>Column grid structure</b>	—
<b>Structure</b>	Reinforced concrete structure
<b>PENB</b>	G
<b>Reference number</b>	36075

Logistic park offering industrial, warehouse and office space for lease. The premises are suitable for logistic centers and light manufacturing, offer a high standard of equipment, and can be designed based on specific requests and requirements. Thanks to its location the park is suitable for domestic and international distribution and production.

### Location:

The park is located 20 km from the Polish border near the Skoda production plant. Regional capital, Hradec Králové, is 40km away. The areal is located on route 14 towards the Polish border at Náchod with easy access to the E67 pan-European route.

### Features and Services:

- Flexible units (storage / office / light production / showroom)
- Onsite property management
- 24/7 security service and CCTV
- Park maintenance
- Sufficient parking space
- High standard of building

### Industrial/Warehouse space:

- Dock levelers & loading ramps
- Dimension of entrance gate 4x4,5 m
- Floor loading capacity 5 T/sq.m
- Clear height 10,5 m
- Column grid structure 12x24 m
- LED Light
- Sprinkler system
- Utility connections (water, sewage, gas, electricity)

### Office:

- Turn key office
- Clear height 2,75 m
- Air-conditioning
- External blinds

Lessee pays no commission.

