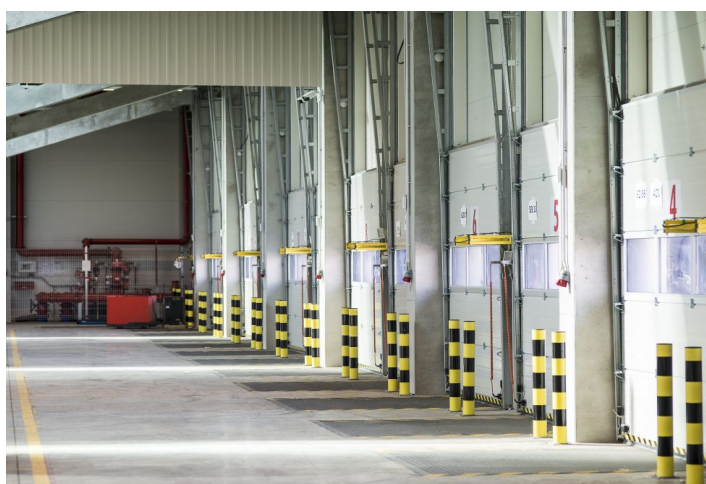




## Warehouse space

51 054 m<sup>2</sup>, Brno-město, Brno - venkov, Blučina

Ask for price





## Warehouse space

Ask for price

51 054 m<sup>2</sup>, Brno-město, Brno - venkov, Blučina

Total area	51 054 m <sup>2</sup>
Available area for rent	25 652 m <sup>2</sup>
Ceiling height	10.5 m
Floor loading capacity	5 t/m <sup>2</sup>
Column grid structure	—
Structure	Reinforced concrete structure
PENB	G
Reference number	36109

**25,652 sq.m.** of warehouse, industrial and office space for lease in the ilogistic park. The premises are suitable for logistic centers and light manufacturing, offer a high standard of equipment, and can be designed based on specific requests and requirements. Thanks to its location the park is suitable for domestic and international distribution and production.

### Location:

The park is located in the south Moravian region, just 8km south of Brno on the European route E65 towards Bratislava. The south Moravian region is regarded as a knowledge hub and logistics gateway, and is also one of the fastest growing business destinations in the country. The region boasts more than 1 million inhabitants, 13 universities with a focus on IT and science, and a strategic position near the Austrian and Slovak borders.

### Features and Services:

- Flexible units (storage / office / light production / showroom)
- Onsite property management
- 24/7 security service and CCTV
- Park maintenance
- Sufficient parking space
- High standard of building

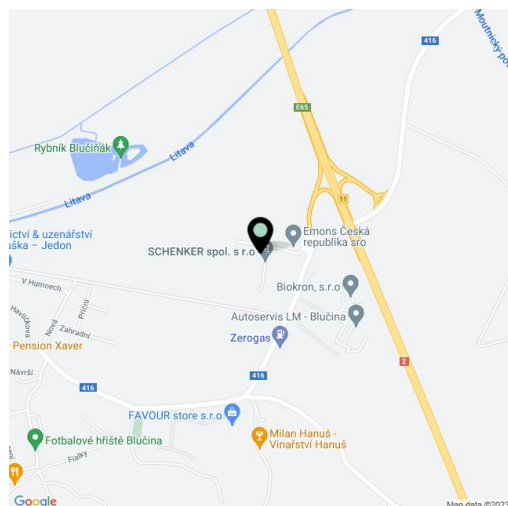
### Industrial/Warehouse space:

- Dock levelers & loading ramps
- Dimension of entrance gate 4x4,5 m
- Floor loading capacity 5 T/sq.m
- Clear height 10,5 m
- Column grid structure
- LED Light
- Sprinkler system
- Utility connections (water, sewage, gas, electricity)

### Office:

- Turn key office
- Clear height 2,75 m
- Air-conditioning
- External blinds

Lessee pays no commission.







## Warehouse space

51 054 m<sup>2</sup>, Brno-město, Brno - venkov, Blučina

Ask for price

