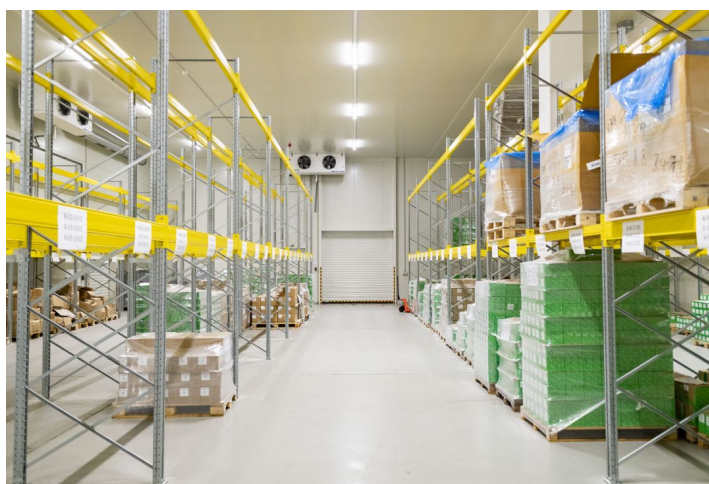




## Logistic park

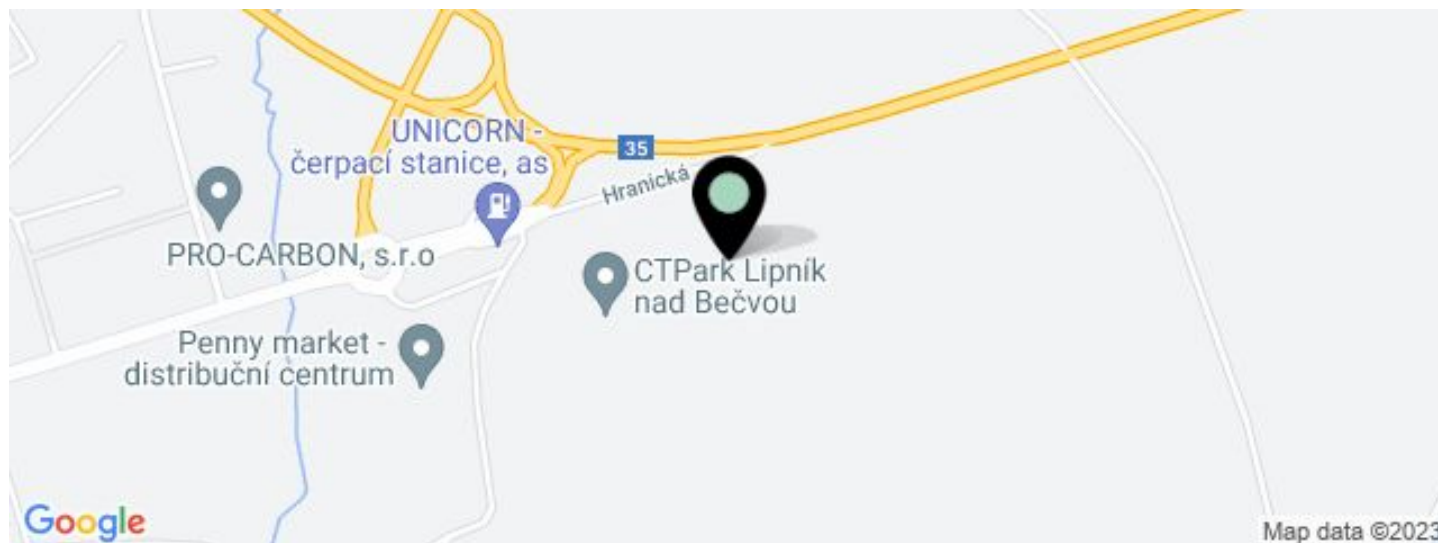
49 787 m<sup>2</sup>, Přerov, Lipník nad Bečvou, Hranická

Ask for price





## Logistic park

[Ask for price](#)49 787 m<sup>2</sup>, Přerov, Lipník nad Bečvou, Hranická

UNIT	AVAILABLE AREA	SERVICES	PARKING	MONTHLY RENT
Building L3 - planned	1 172 m <sup>2</sup>	0 CZK monthly per m <sup>2</sup>	Yes	Ask for price
Building L4- available	2 343 m <sup>2</sup>	0 CZK monthly per m <sup>2</sup>	Yes	Ask for price
Building L1- available	37 684 m <sup>2</sup>	0 CZK monthly per m <sup>2</sup>	Yes	Ask for price
Building L5- planned	8 791 m <sup>2</sup>	0 CZK monthly per m <sup>2</sup>	Yes	Ask for price



## Logistic park

49 787 m<sup>2</sup>, Přerov, Lipník nad Bečvou, Hranická

**Ask for price**

<b>Total area</b>	49 787 m <sup>2</sup>
<b>Available area for rent</b>	49 990 m <sup>2</sup>
<b>Ceiling height</b>	10.5 m
<b>Floor loading capacity</b>	5 t/m <sup>2</sup>
<b>Column grid structure</b>	—
<b>Structure</b>	Reinforced concrete structure
<b>PENB</b>	G
<b>Reference number</b>	36150

Logistic park offering warehouse, industrial and office space for lease. The premises are suitable for logistic centers and light manufacturing, offer a high standard of equipment, and can be designed based on specific requests and requirements. Thanks to its location the park is suitable for domestic distribution and production.

### Location:

The park is located near the D1 motorway midway between Brno and Ostrava.

### Features and Services:

- Flexible units (storage / office / light production / showroom)
- Onsite property management
- 24/7 security service and CCTV
- Park maintenance
- Sufficient parking space
- High standard of building

### Industrial/Warehouse space:

- Dock levelers & loading ramps
- Dimension of entrance gate 4x4,5 m
- Floor loading capacity 5 T/sq.m
- Clear height 10,5 m
- Column grid structure 12x24 m
- LED Light
- Sprinkler system
- Utility connections (water, sewage, gas, electricity)

### Office:

- Turn key office
- Clear height 2,75 m
- Air-conditioning
- External blinds

Lessee pays no commission.





# Logistic park

49 787 m<sup>2</sup>, Přerov, Lipník nad Bečvou, Hranická

**Ask for price**

Total Available space	59,234 m <sup>2</sup>
Planned construction	59,234 m <sup>2</sup>
Total area	16.81 ha

- Built
- Built - available
- Planned

