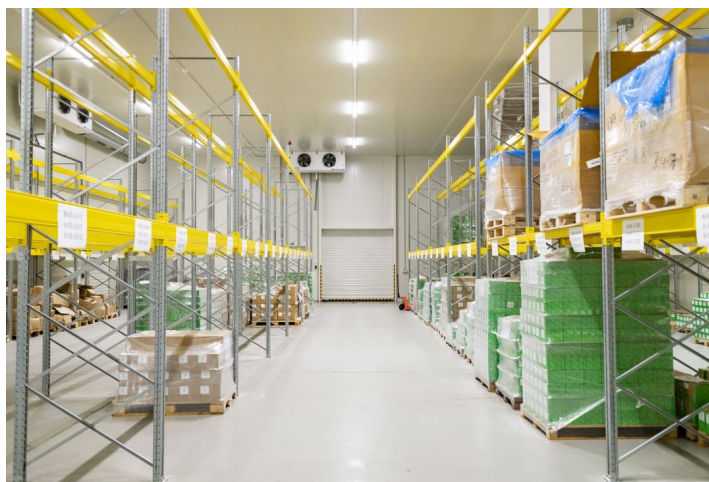




Industrial space

8 791 m², Přerov, Lipník nad Bečvou, Hranická

Ask for price





Industrial space

8 791 m², Přerov, Lipník nad Bečvou, Hranická

Ask for price

Total area	8 791 m ²
Available area for rent	8 791 m ²
Ceiling height	10.5 m
Floor loading capacity	5 t/m ²
Column grid structure	—
Structure	Reinforced concrete structure
PENB	G
Reference number	36155

8,791 sq.m. of Industrial, warehouse and office space for lease in the industrial park. The premises are suitable for industrial centers and light manufacturing, offer a high standard of equipment, and can be designed based on specific requests and requirements. Thanks to its location the park is suitable for domestic distribution and production. Available within 9 months after signing of the contract.

Location:

The park is located near the D1 motorway midway between Brno and Ostrava.

Features and Services:

- Flexible units (storage / office / light production / showroom)
- Onsite property management
- 24/7 security service and CCTV
- Park maintenance
- Sufficient parking space
- High standard of building

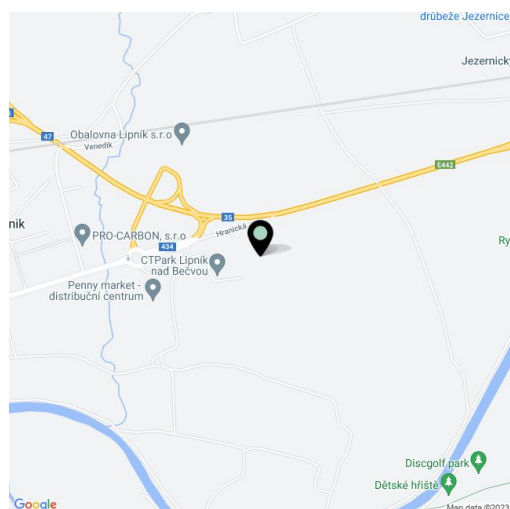
Industrial/Warehouse space:

- Dock levelers & loading ramps
- Dimension of entrance gate 4x4,5 m
- Floor loading capacity 5 T/sq.m
- Clear height 10,5 m
- Column grid structure 12x24 m
- LED Light
- Sprinkler system
- Utility connections (water, sewage, gas, electricity)

Office:

- Turn key office
- Clear height 2,75 m
- Air-conditioning
- External blinds

Lessee pays no commission.





Industrial space

8 791 m², Přerov, Lipník nad Bečvou, Hranická

Ask for price

