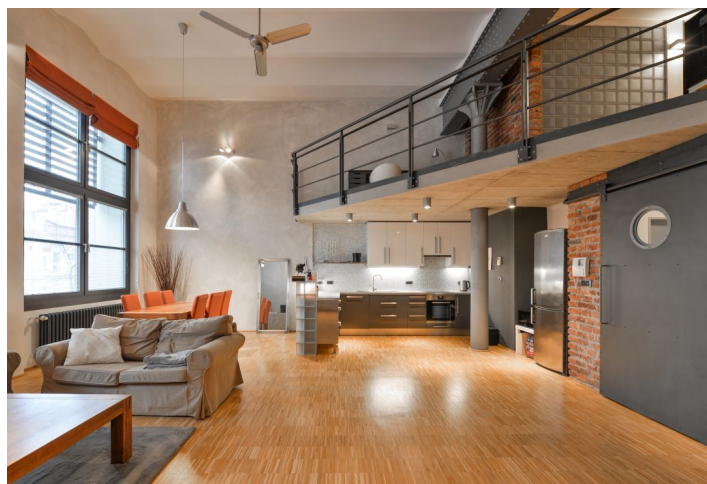




Apartment One-bedroom (2+kk)

Rented

114 m², Prague 7, Holešovice, Na Maninách





Apartment One-bedroom (2+kk)

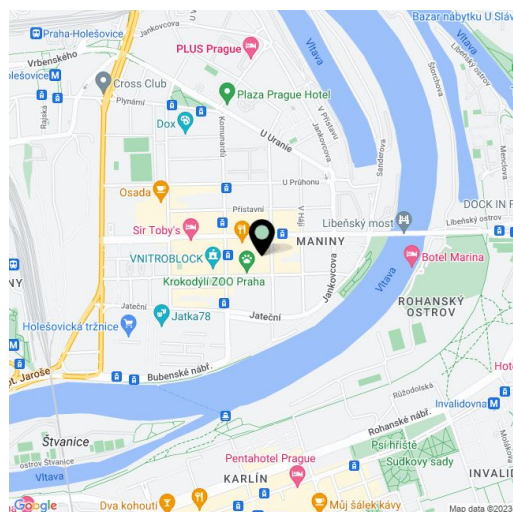
Rented114 m², Prague 7, Holešovice, Na Maninách

Total area	114 m ²
Parking	Underground garage parking space for CZK 2500/mo.
Garage	Yes
Cellar	Yes
Service price	3000 CZK Monthly
PENB	G
Reference number	3619
Available from	Immediately

Prague loft for rent. Unique furnished loft flat with preserved industrial features on the 2nd floor with lift in an original brewery building in the Holešovický pivovar gated project with 24/7 security and underground parking. Located in the popular fast growing Prague 7 area near the Vltava riverbank, with full amenities within easy reach and very good transportation connections (one minute to trams, five minutes to metro Vltavská and Nádraží Holešovice). Array of shops, restaurants, cafés, DOX gallery, La Fabrika Theater and services within walking distance.

The flat features living room with a 5 m ceiling and a 2 huge double height openable windows, open kitchen area with breakfast bar (decorated with glass blocks) and built in appliances, bathroom, toilet and a spacious storage room, on the lower level. On the open gallery is a bedroom with en-suite shower bathroom and a walk-in closet, there is also a study area.

Cable and satellite TV connection, video entry phone, washer, dryer, light dimmers, wood floors, security door, cast iron posts, steel girders. Parking space available for CZK 2500/month. Cellar (7m²) available for CZK 1000/month. Common building charges CZK 3000/month. Utilities are billed separately.



* Area of the unit according to the Civil Code. The area consists of the sum total area of the entire unit bounded by perimeter walls.



Apartment One-bedroom (2+kk)

Rented

114 m², Prague 7, Holešovice, Na Maninách

