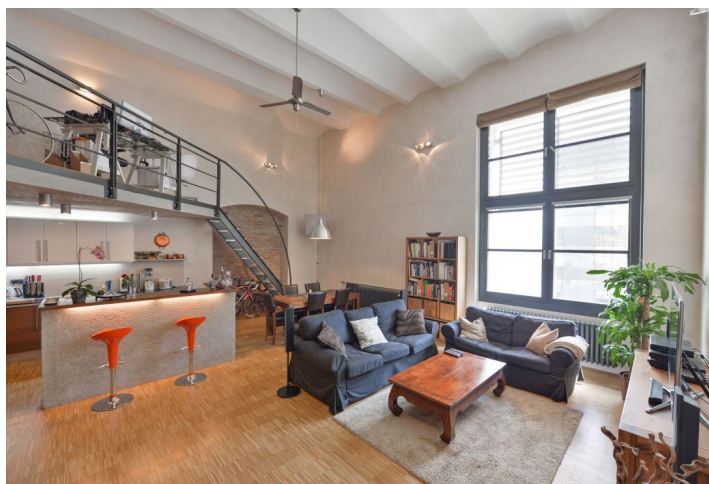
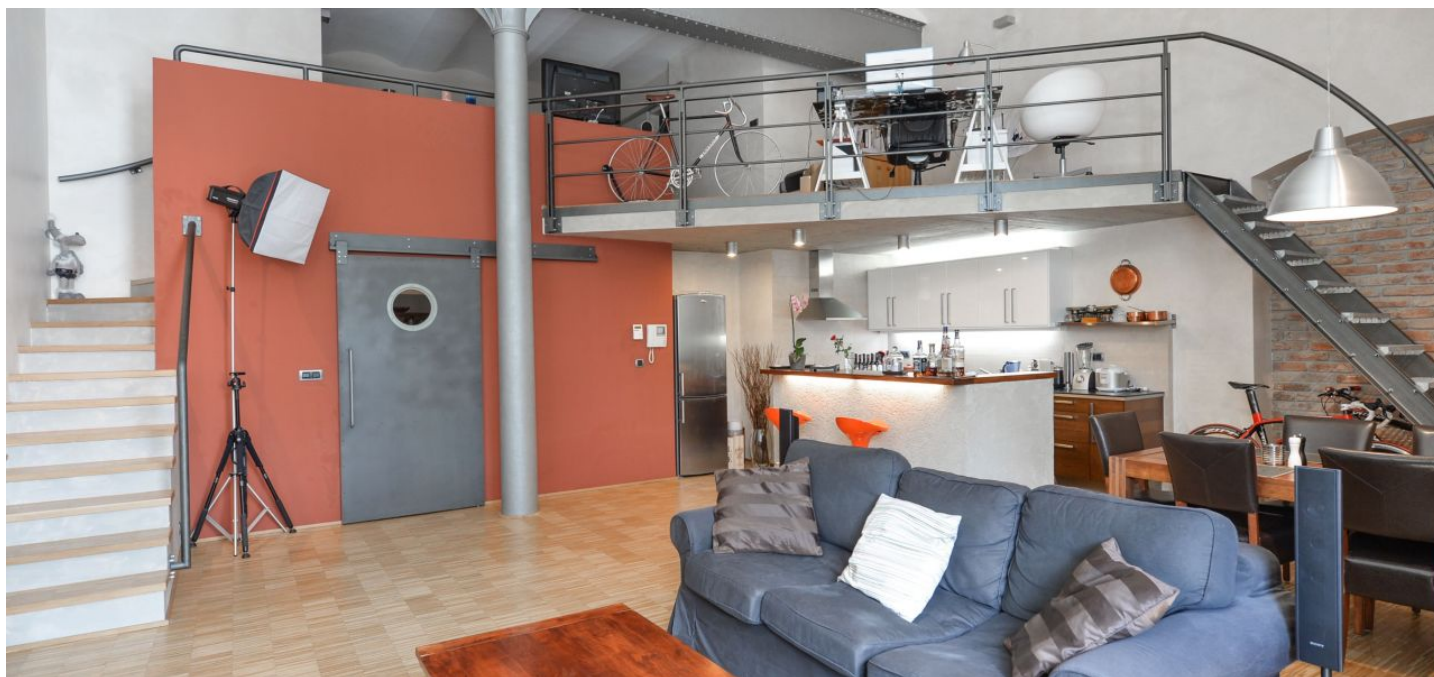




Apartment One-bedroom (2+kk)

Rented

115 m², Prague 7, Holešovice, Na Maninách





Apartment One-bedroom (2+kk)

Rented

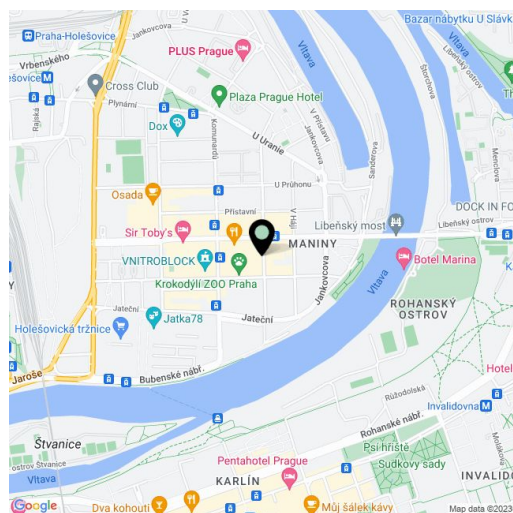
115 m², Prague 7, Holešovice, Na Maninách

Total area	115 m ²
Parking	Underground garage parking space.
Garage	Yes
Cellar	Yes
Service price	Common building charges CZK 3,000/month. Utilities are paid separately based on consumption (CZK 3,000/month).
PENB	G
Reference number	3620
Available from	Immediately

This unique, furnished loft apartment with preserved industrial features is on the 2nd floor of an original brewery building with an elevator in the Holešovický pivovar gated project with 24-hour security and underground parking. Located in a fast-growing Prague 7 area within easy reach of the Vltava River, with full amenities within easy reach and very good transportation connections (one minute to trams, five minutes to the Vltavská and Nádraží Holešovice metro stations).

The apartment features a living room with a 5 m ceiling and huge double-height openable windows, an open plan kitchen with a breakfast bar and built-in appliances, a bathroom with a bathtub, a separate toilet, and a storage room. On the open gallery level is a bedroom with an en-suite shower bathroom, a walk-in closet, and a study area.

Original industrial features, vaulted ceiling, steel girders, cast iron pillars, wooden floors, tiles, security entry door, TV, satellite connection, video entry phone, washer, dryer, light dimmers. 8 m² basement storage unit available at CZK 2,000/month. Parking space available at CZK 3,000/month.



* Size of the unit according to the Housing Act.
The area consists of the sum total of the internal area of every room.



Apartment One-bedroom (2+kk)

Rented

115 m², Prague 7, Holešovice, Na Maninách

