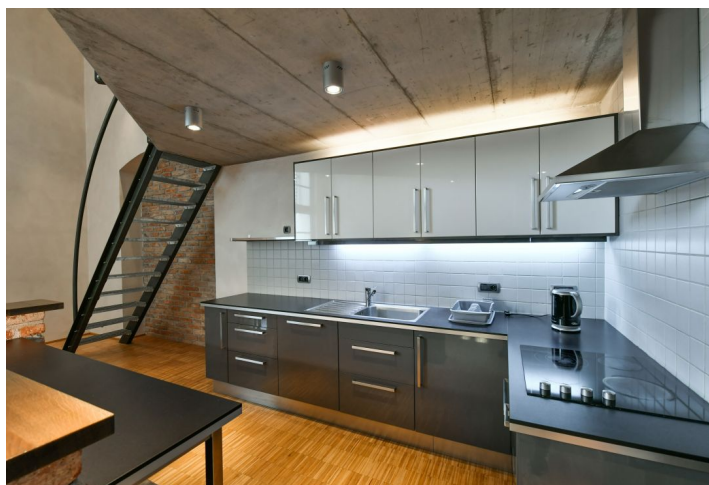
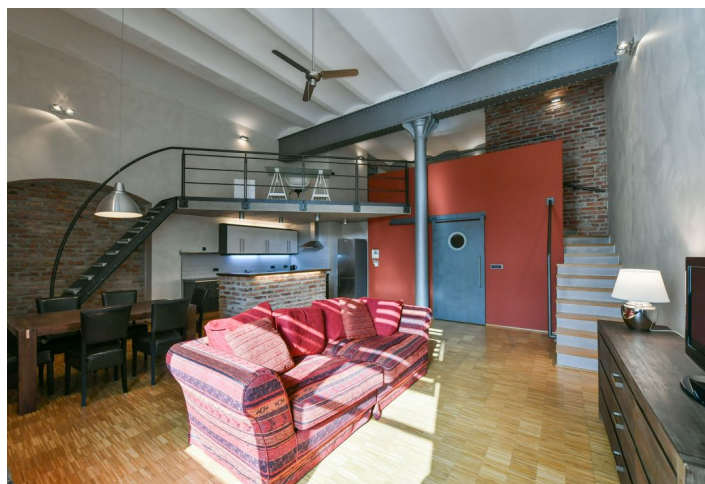




Apartment One-bedroom (2+kk)

Rented

114 m², Praha 7, Holešovice, Na Manínách





Apartment One-bedroom (2+kk)

Rented

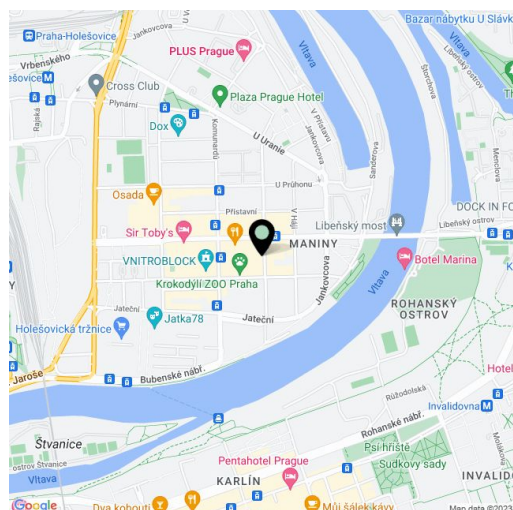
114 m², Praha 7, Holešovice, Na Maninách

Total area	114 m ²
Parking	Garage parking as per request.
Garage	Yes
Cellar	Yes
Service price	Common building charges CZK 3,000/month. Utilities CZK 3,000/month.
PENB	G
Reference number	3621
Available from	Immediately

This unique, fully furnished loft apartment with preserved industrial features is on the 1st floor of an original brewery building with an elevator in the gated Holešovický pivovar complex with 24-hour security. A quiet location within easy reach of the Vltava River, with a full range of amenities and good transportation connections to the center (1 minute to a tram stop, 5 minutes to the Vltavská and Nádraží Holešovice metro stations).

The unit features a living room with a 5 m ceiling and huge double-height openable window, an open plan kitchen area with a breakfast bar and built-in appliances, a bathroom, a toilet, and a storage room on the lower level. On the open gallery is a bedroom with an en-suite shower bathroom, a walk-in closet, and a study area.

Telephone, Internet, cable and satellite TV connections, video entry phone, washer, dryer, light dimmers, wooden floors, some exposed brick walls, security door, steel girders, cast iron column, 24/7 security and cameras, 7 sq. m. basement storage unit with more than 3 m ceilings at CZK 2,000/month,



* Size of the unit according to the Housing Act.

The area consists of the sum total of the internal area of every room.



Apartment One-bedroom (2+kk)

Rented

114 m², Praha 7, Holešovice, Na Maninách

