



House Three-bedroom (4+kk)

Rented

216 m², Praha 6, Střešovice, Lomená





House Three-bedroom (4+kk)

Rented

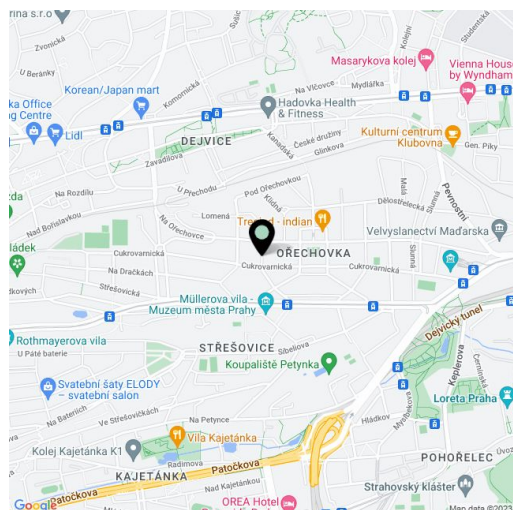
216 m², Praha 6, Střešovice, Lomená

Total area	216 m ²
Plot	219 m ²
Foot print	136 m ²
Garden	83 m ²
Floor area	200 m ²
Terrace	16 m ²
Parking	-
Cellar	Yes
PENB	G
Reference number	36307
Available from	Immediately

Charming townhouse with a sauna and a well-kept garden in a unique location. Boasting a prestigious address, this 3-bedroom 2-bathroom home is situated in the heart of the exclusive Ořechovka neighborhood with mature trees, parks and distinguished villas. Location with quick access to the city center, the Prague Castle, international schools and the airport, within easy reach of Dejvická and Hradčanská metro stations with full amenities nearby. Traditional residential area with a long history, providing residents with peace and privacy. A tram stop is located a few minutes from the house.

The ground floor includes a living room with a dining area and a fully fitted kitchen, a toilet, an entrance hall, and a back entrance to the garden. The first floor offers two bedrooms, a small office, a shower room, a toilet, and a hall. The attic floor features a spacious bedroom, a bathroom with a bathtub, a toilet, and two large storage rooms. There is a basement floor with a laundry room, a **sauna**, a bath, a shower, a toilet, and storage.

Preserved original details, **solid wood parquet floors**, laminated floors, tiles, gas boiler, blinds, washer, dryer, dishwasher, microwave oven, alarm. Utilities are approx. CZK 6000/month.

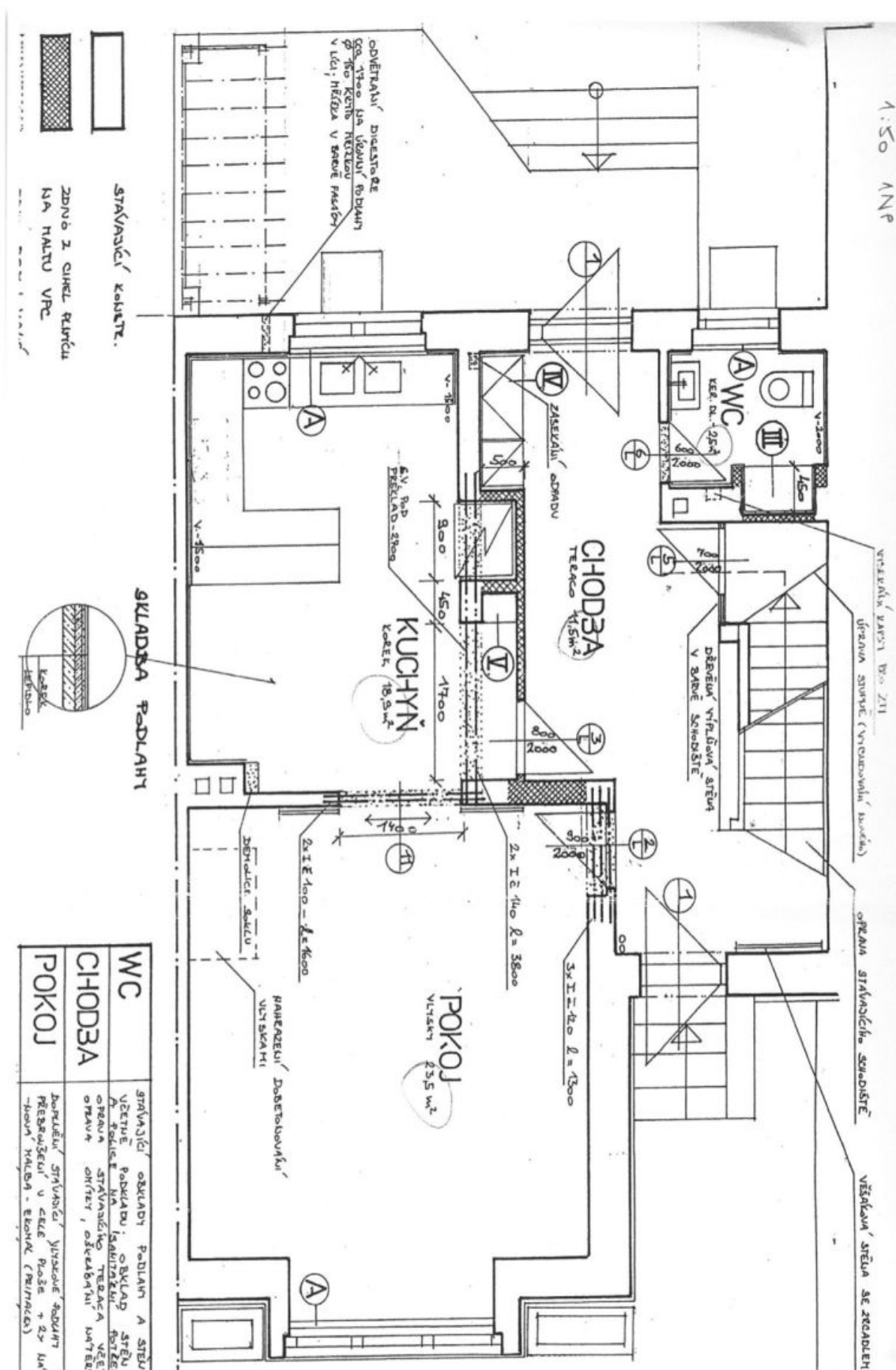




House Three-bedroom (4+kk)

Rented

216 m², Praha 6, Střešovice, Lomená



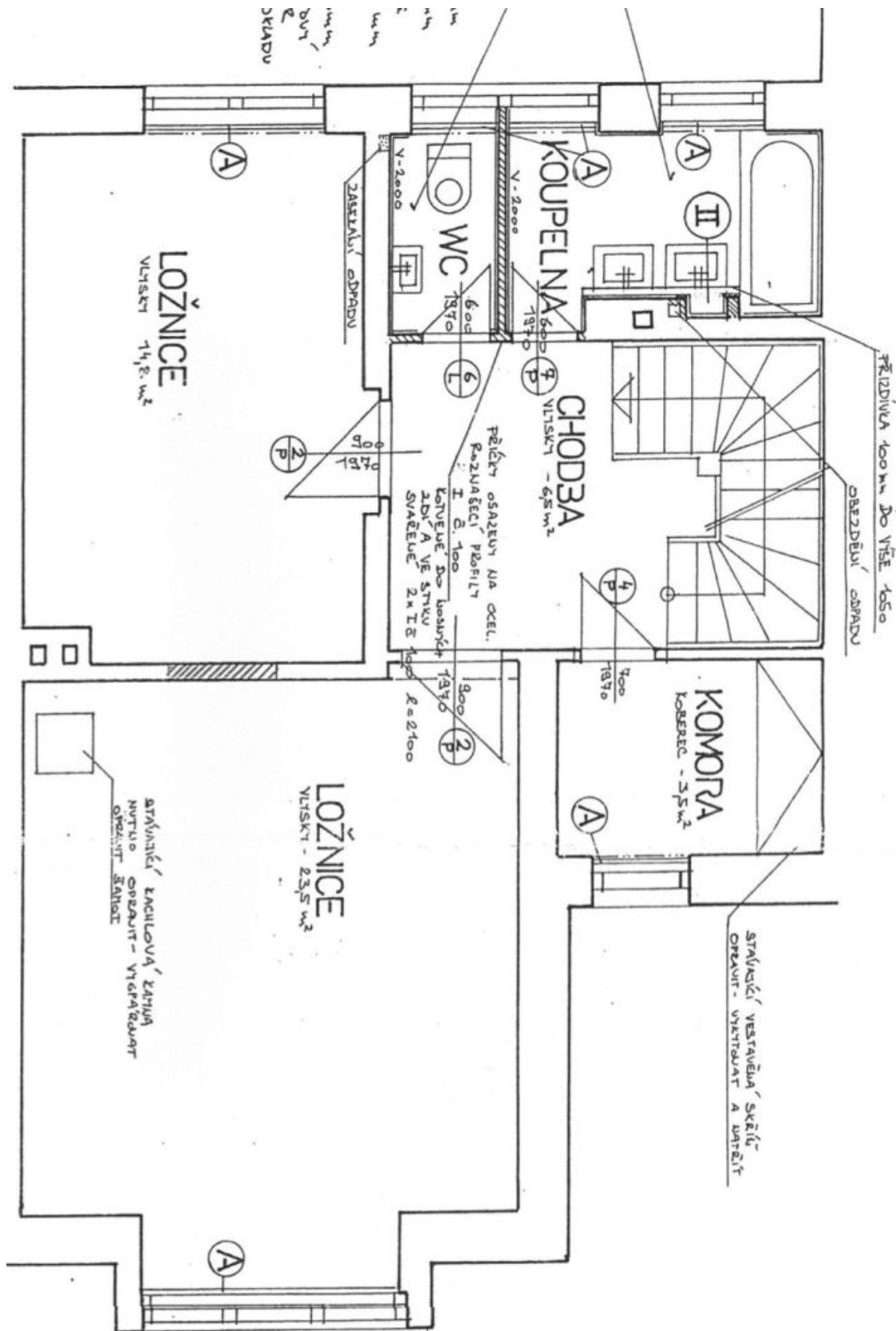
WC	CHODBA	POKOJ
STAVĚNÍ KAMENEM, OKENNÍ RÁMČÍKOVÁ STĚNA, VĚŠÁKOVÁ STĚNA, VĚŠÁKOVÁ STĚNA V PRÁVNÍ ŽÁSTI VPR ŽTI, ÚSTŘEDNÍ STŘEŠNÍ (VYHOŘELÁVAJÍCÍ KAMENEM)	STAVĚNÍ KAMENEM, OKENNÍ RÁMČÍKOVÁ STĚNA, VĚŠÁKOVÁ STĚNA, VĚŠÁKOVÁ STĚNA V PRÁVNÍ ŽÁSTI VPR ŽTI, ÚSTŘEDNÍ STŘEŠNÍ (VYHOŘELÁVAJÍCÍ KAMENEM)	STAVĚNÍ KAMENEM, OKENNÍ RÁMČÍKOVÁ STĚNA, VĚŠÁKOVÁ STĚNA, VĚŠÁKOVÁ STĚNA V PRÁVNÍ ŽÁSTI VPR ŽTI, ÚSTŘEDNÍ STŘEŠNÍ (VYHOŘELÁVAJÍCÍ KAMENEM)



House Three-bedroom (4+kk)

Rented

216 m², Praha 6, Střešovice, Lomená

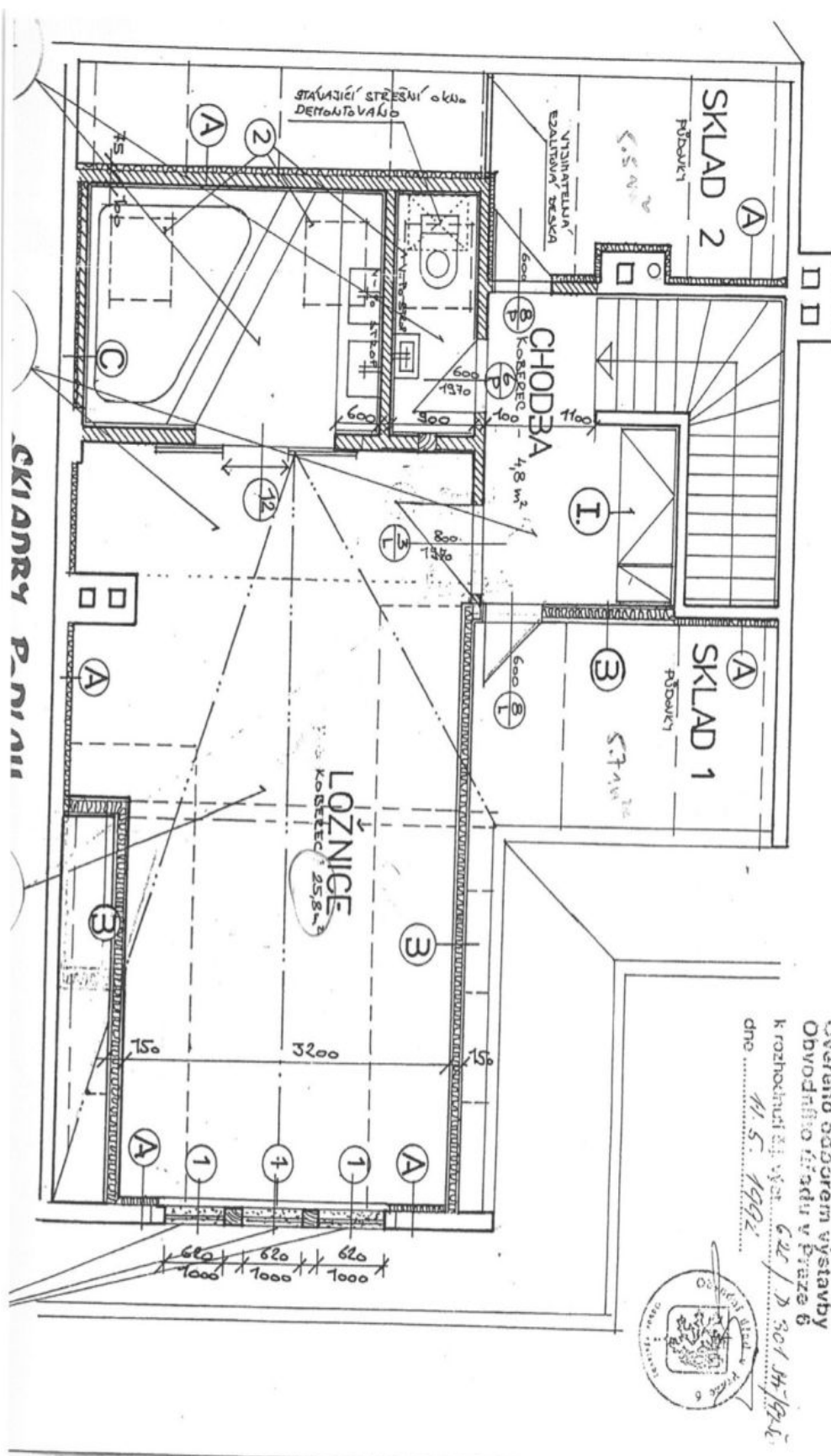




House Three-bedroom (4+kk)

216 m², Praha 6, Střešovice, Lomená

Rented

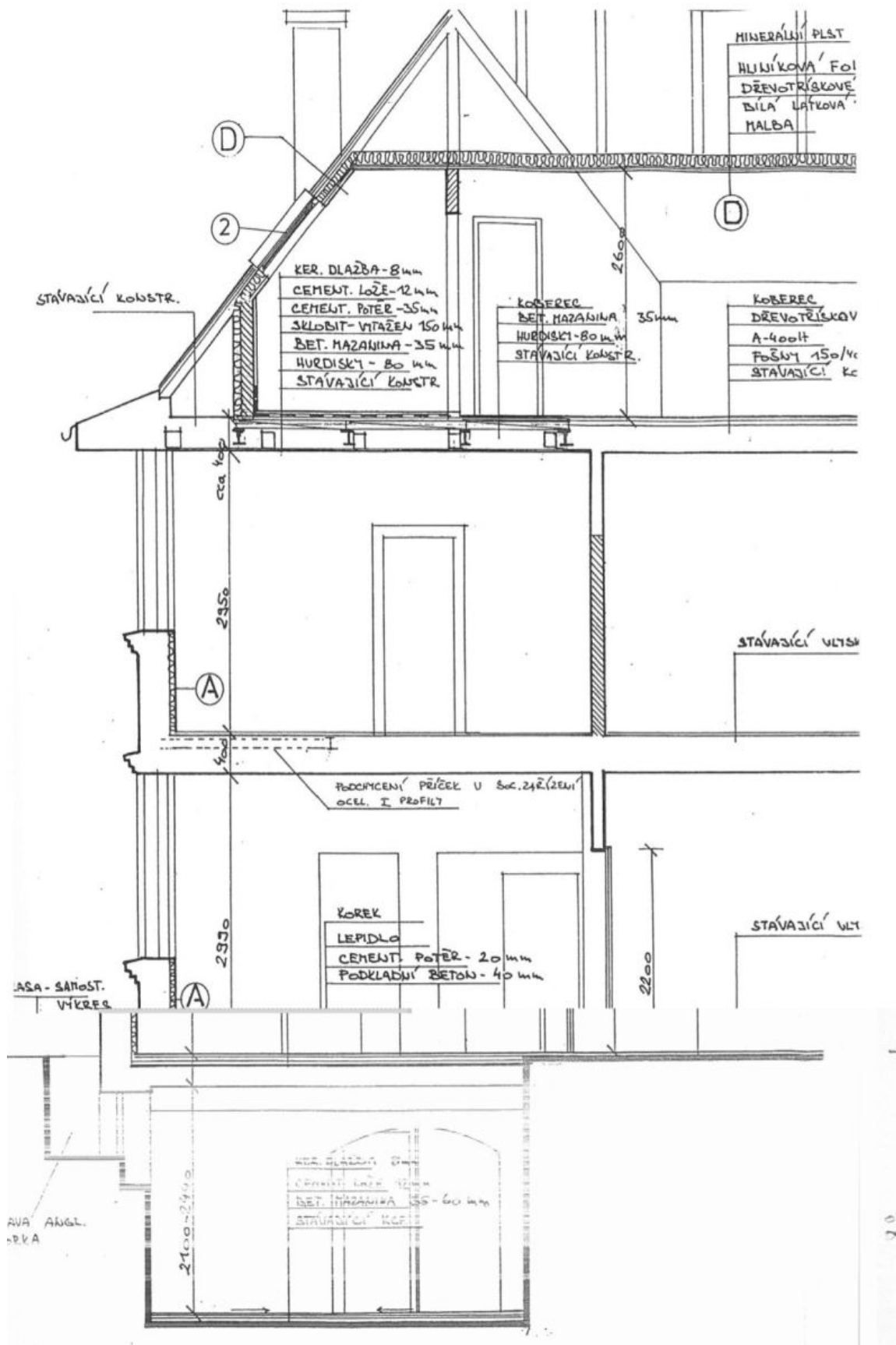




House Three-bedroom (4+kk)

216 m², Praha 6, Střešovice, Lomená

Rented





House Three-bedroom (4+kk)

Rented

216 m², Praha 6, Střešovice, Lomená

