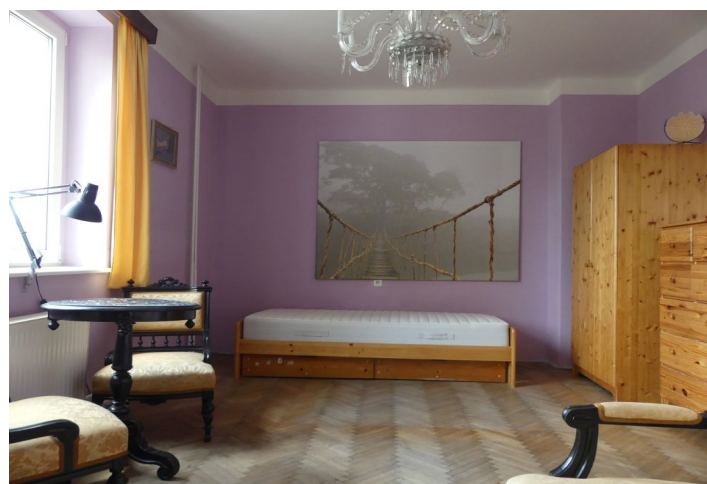




House Five-bedroom (6+1)

135 m², Prague 9, Libeň, Trojmezí

€ 1 940 | CZK 48 000





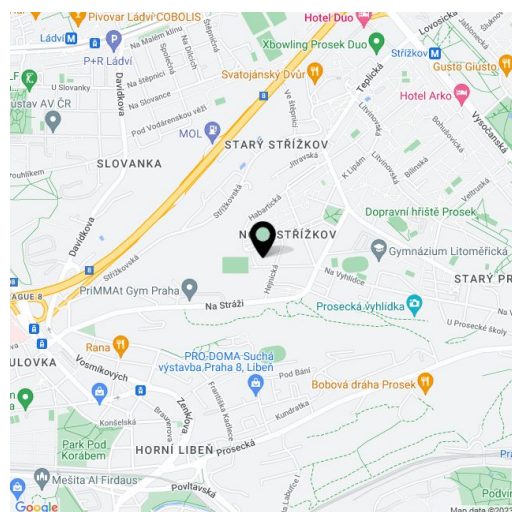
House Five-bedroom (6+1)

€ 1 940 | CZK 48 000

135 m², Prague 9, Libeň, Trojmezí

Plot	173 m²
Parking	Parking on the plot.
Cellar	-
PENB	G
Reference number	36327
Available from	Immediately

Benefiting from beautiful views of the city panorama, this is a 3-4-bedroom 3-bathroom townhouse with two apartments with separate entrances, a south facing terrace and garden, in a quiet residential neighborhood in Prague 9, just moments from a green square. Located near a vast forested park - Prosecké skály, with bus connections to B and C line metro, within walking distance of Prosek and Střížkov metro stations (10-15 min.). Within easy reach of full amenities including Prosek and Letňany shopping malls, Duo sports center with a swimming pool and bowling, the Prosek health care center, the Bulovka hospital, a bobsleigh track, a rope center, and more.



The ground floor features a fully fitted eat-in kitchen with a pantry and a winter garden with access to the **terrace** and back **garden**, a bathroom (bathtub, toilet), and an entrance hall. The first floor offers a living room plus a bedroom with stairs leading up to the second floor including a hall / study, a bedroom, and a bathroom (walk-in shower, toilet). Benefiting from a separate entrance, the lower ground floor consists of a fitted kitchen, a walk-through bedroom / second living room, a bedroom with a French window and direct access to the garden, a bathroom with a walk-in shower and **marble** tiling, and a separate toilet.

Preserved original details, **solid wood parquet floors**, laminated floors, tiles, **granite** kitchen countertop and tiling, gas boiler, electric boilers for hot water, washer, dryer, dishwasher, induction cooktops, microwave oven, garden furniture. The house can be rented out without furniture. **Parking** is available on the plot (included). Monthly deposit for utilities in the amount of CZK 3800 is billed separately.