





Office space

Prague 7, Holešovice, Poupětova

Rented

Service price	4 EUR monthly per m ²
Available area	131 m ²
Cellar	-
Terrace	40 m ²
Parking	Yes
PENB	B
Reference number	36524

Office space for lease on the 5th floor in the DOX + building located on the site of a former factory in Prague's Holešovice neighborhood and connected to the DOX multifunctional space, which has created a unique environment dedicated to contemporary art in the Czech Republic. This internationally recognized concept and great example of first-class contemporary architecture was designed by the Czech architect Ivan Kroupa, who participated in the transformation of the old factory into a multifunctional space.

The offices are located in a renovated building from the 1970s, which in the past belonged to timber companies. The building was then completely reconstructed according to the plans of the Petr Hájek ARCHITECTS studio, which came up with a novel approach to the project, which was that the interior modifications should respect the era in which the building was constructed in terms of the overarching concept and materials used. The mission of the DOX Center is not only to present contemporary Czech and international art, but also to encourage public discourse on important social issues that are shaping and changing the world today. In addition to the exhibition space, the multifunctional hall, and the administrative building, the set of buildings also consists of a design shop and the unmistakable Gulliver airship with its steel-wooden structure.

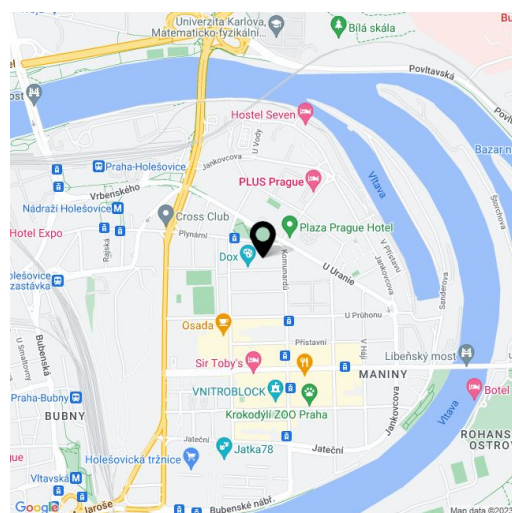
The founder of the project is Leoš Válka, who in 2011 won the Award of the Ministry of Culture of the Czech Republic for his long-term contribution and merits in the field of fine arts. The building was also nominated for the prestigious European Mies van der Rohe Award.

Location:

Excellent accessibility by public transport and by car. The Ortenovo náměstí tram stop can be reached on foot in 3 minutes and from there the center of Prague is only a 10-minute tram ride away. The Nádraží Holešovice (line C) metro station and the Prague-Holešovice train station are also close-by. Wenceslas Square is just 5 minutes away by metro.

Features and services:

24/7 reception
Security
Elevators
CCTV
ESS, EFDS
Cooling
Maintenance of common areas
Parking
Bistro
Terrace
Rest area on the 2nd floor
Server room





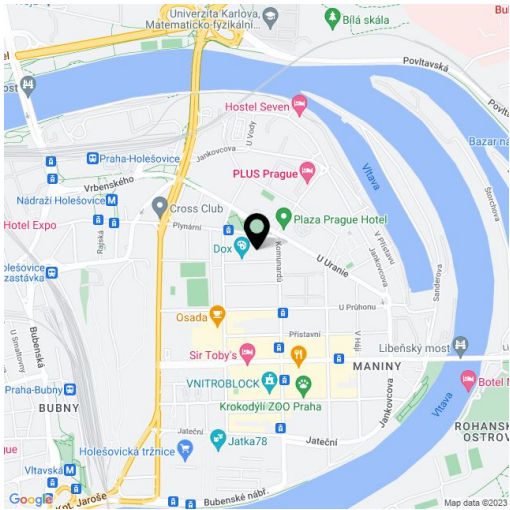
Office space

Rented

Prague 7, Holešovice, Poupětova

Service price	4 EUR monthly per m²
Available area	131 m²
Cellar	-
Terrace	40 m²
Parking	Yes
PENB	B
Reference number	36524

Kitchenette
Showers
Rental and service charges listed without VAT. Lessee pays no commission.

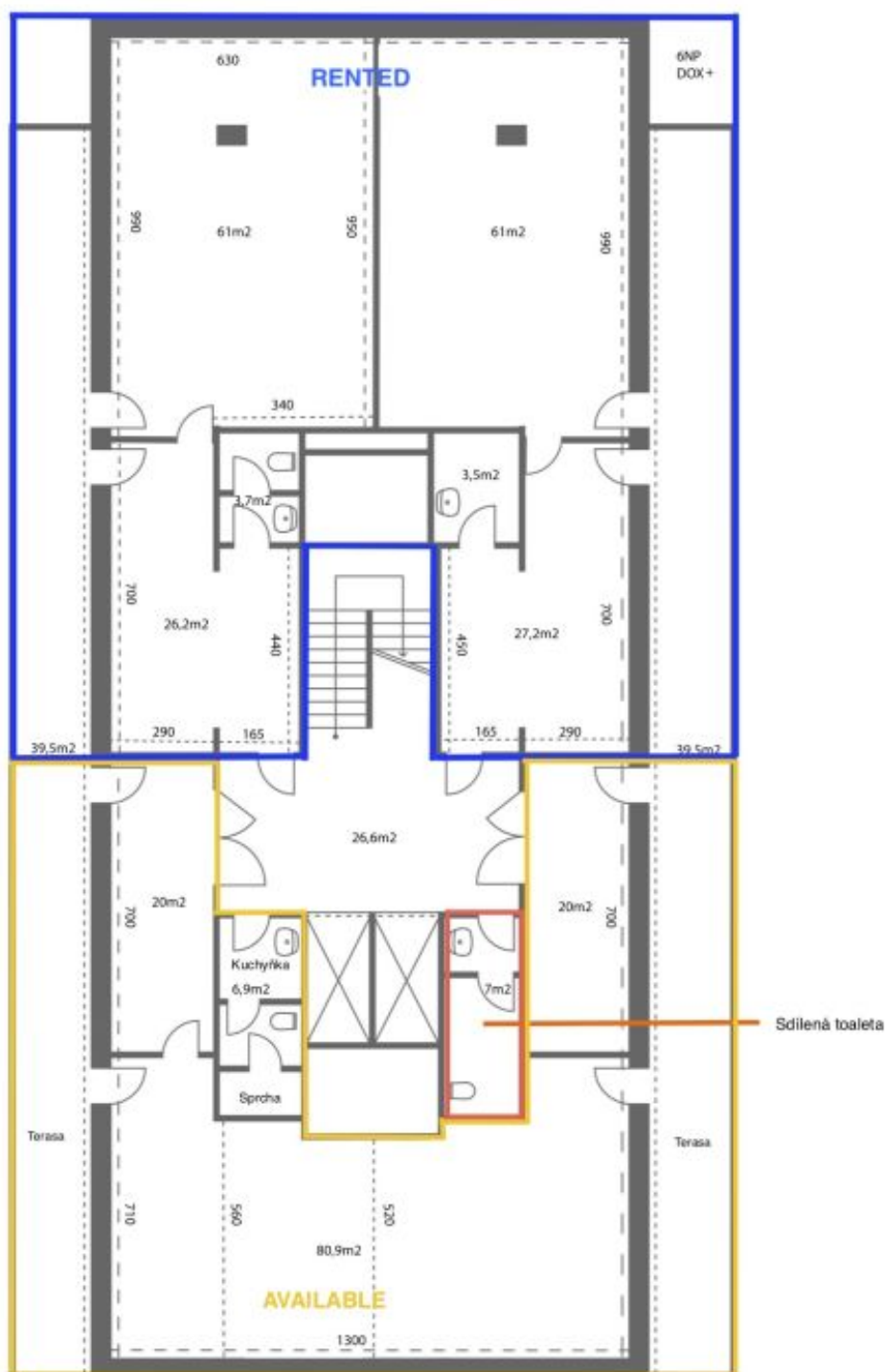




Office space

Prague 7, Holešovice, Poupětova

Rented



**Office space**

Prague 7, Holešovice, Poupětova

Rented