





## Retail space

Prague 1, Nové Město, Náplavní

**Rented**

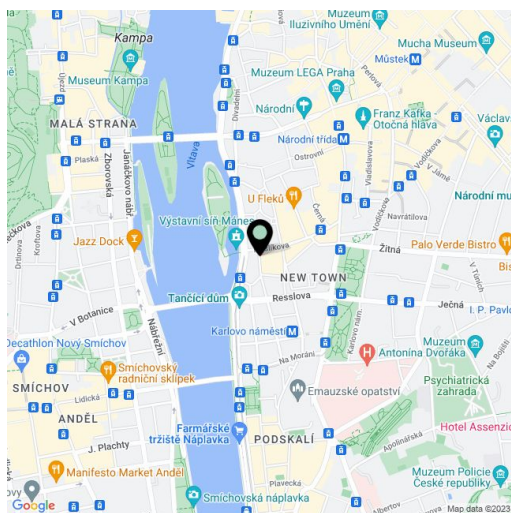
Available area	265 m <sup>2</sup>
Parking	-
PENB	G
Reference number	36559

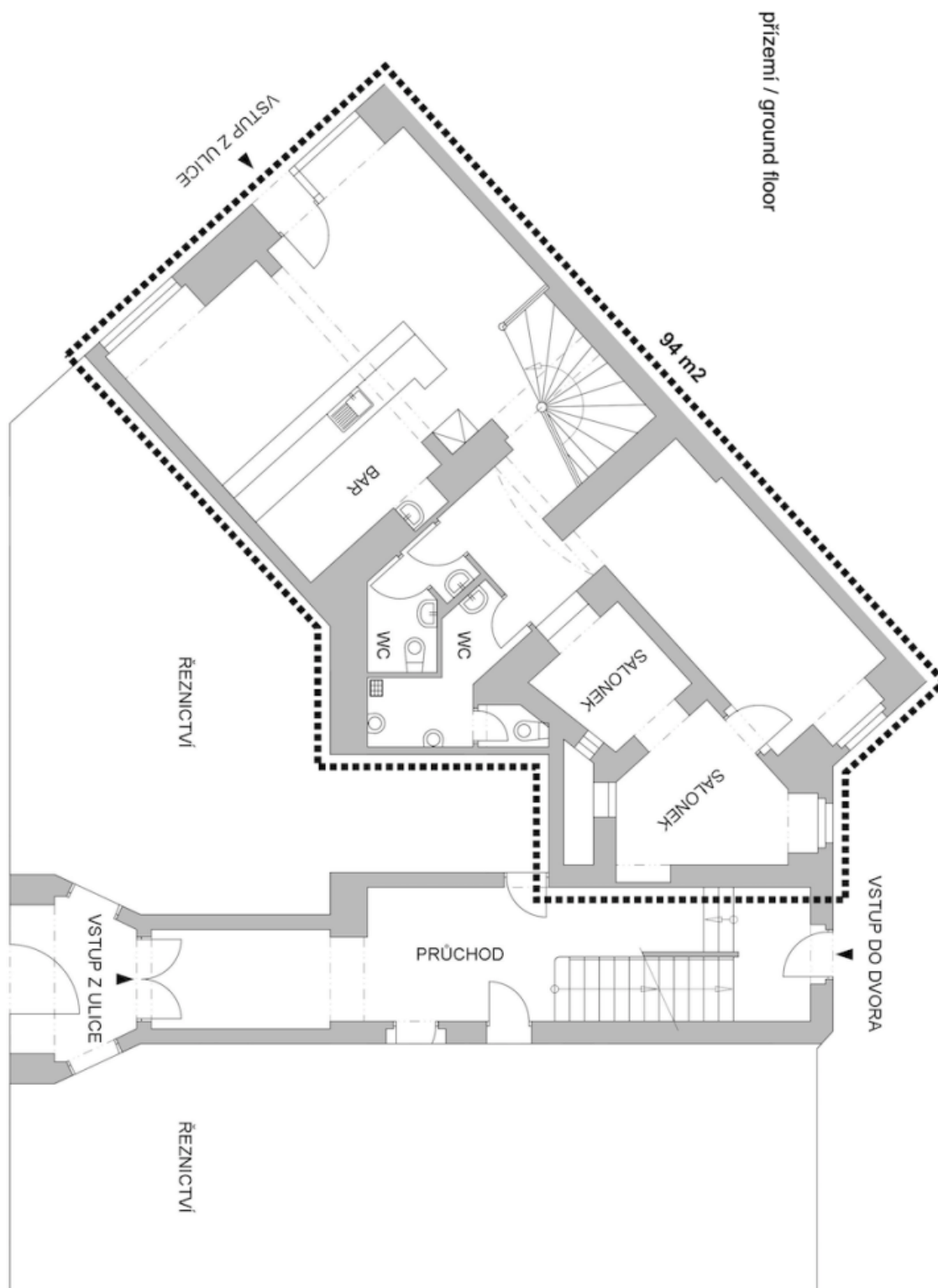
Retail space for lease in an attractive historic location in the very center of Prague near Dancing house, Slovanský ostrov and Masarykovo nábřeží. The space is intended exclusively for restaurant, pub or cafe. The area offers the benefits of full service, including restaurants, shops, banks, medical facilities and cafes.

**Location:**

Retail space is located in a very popular tourist location. Within walking distance there is a tram stop Jiráskovo náměstí and metro station Karlovo náměstí (line B).

Rental and service charges listed without VAT. Lessee pays no commission.







## Retail space

Prague 1, Nové Město, Náplavní

Rented

