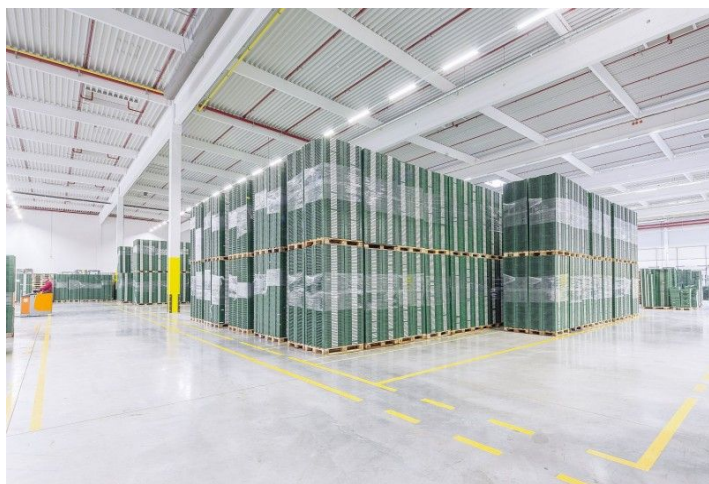




Logistic park

131 500 m², České Budějovice, České Budějovice, Okružní

Ask for price

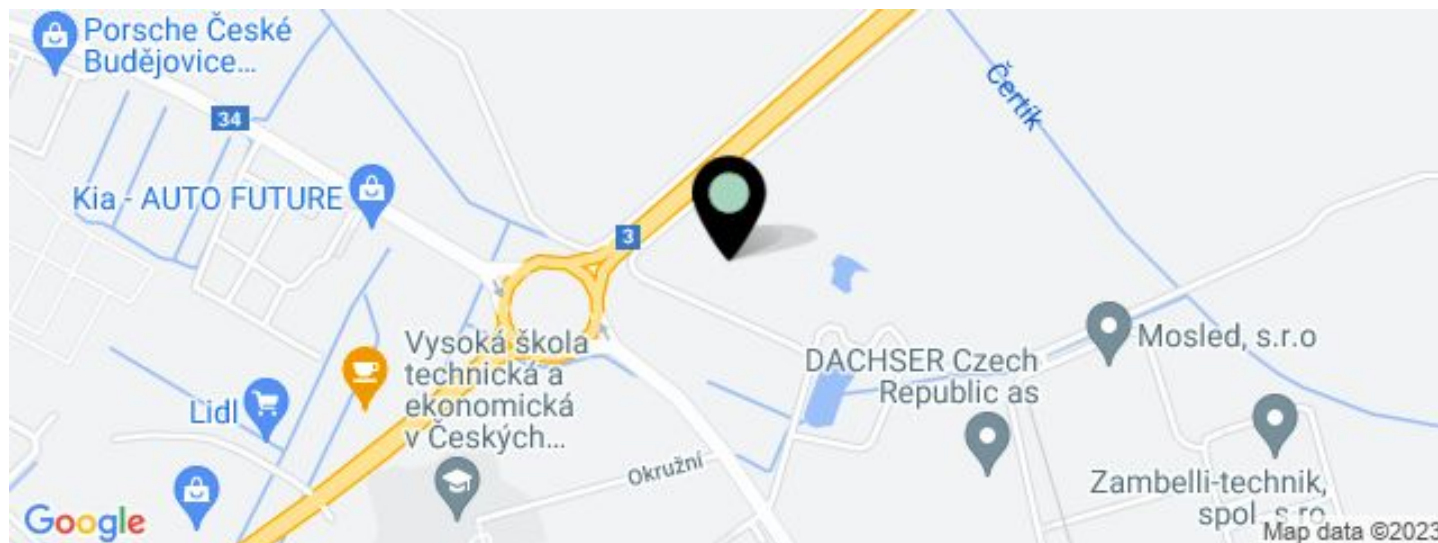




Logistic park

131 500 m², České Budějovice, České Budějovice, Okružní

[Ask for price](#)



UNIT	AVAILABLE AREA	SERVICES	PARKING	MONTHLY RENT
Building G - available from - upon request	1500 - 30 301 m ²	1 EUR monthly per m ²	Yes	Ask for price
Building F - available from - upon request	1500 - 11 737 m ²	1 EUR monthly per m ²	Yes	Ask for price
Building E - available within 12 months after signing the contract	1500 - 48 313 m ²	1 EUR monthly per m ²	Yes	Ask for price
Building B - available in 10 - 12 months after signing the contract	1500 - 4 100 m ²	1 EUR monthly per m ²	Yes	Ask for price
Building A - available in 10 - 12 months after signing a contract	1500 - 5 455 m ²	1 EUR monthly per m ²	Yes	Ask for price



Logistic park

131 500 m², České Budějovice, České Budějovice, Okružní

Ask for price

Total area	131 500 m ²
Available area for rent	105 021 m ²
Ceiling height	10 m
Floor loading capacity	5 t/m ²
Column grid structure	—
Structure	Reinforced concrete structure
PENB	G
Reference number	36587

The logistic park offers warehouse, industrial and office space for lease. On an area of 429 235 sq.m. will be built more than 131 000 sq.m. of premises. The park offers units from 1,500 sq.m. Premises are suitable for logistics services, light production and commercial activities.

Location:

The park is located on the outskirts of České Budějovice, in the Hůry commercial park. The site offers excellent transport connections to and from the city and is adjacent to the junction of Route 34 (E551) and the D3 motorway from Prague to Linz (Austria). There will be a direct exit to and from the motorway.

Features and Services:

- Flexible units (storage / office / light production / showroom)
- Onsite property management
- Park maintenance
- Sufficient parking space
- High standard of building

Industrial/Warehouse space:

- Floor loading capacity 5 T/sq.m
- Clear height 10 m
- Column grid structure 12x12 m a 12x24 m
- Light intensity 300 Lux
- Utility connections (water, sewage, gas, electricity)

Office:

- Turn key office
- Air-conditioning

Lessee pays no commission.



Logistic park

131 500 m², České Budějovice, České Budějovice, Okružní

Ask for price

