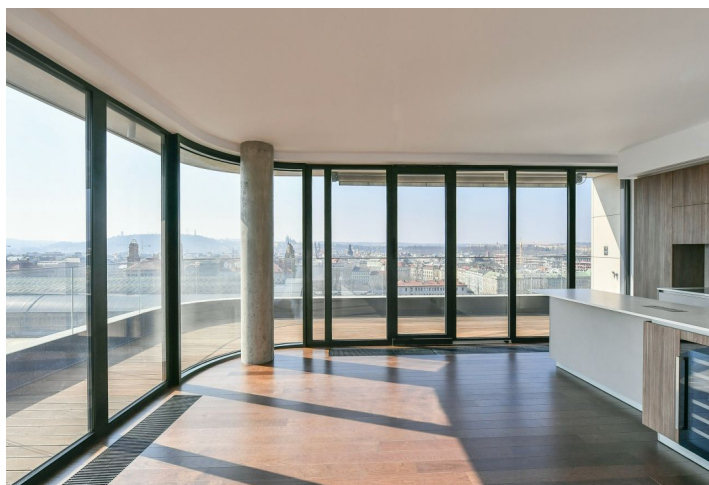
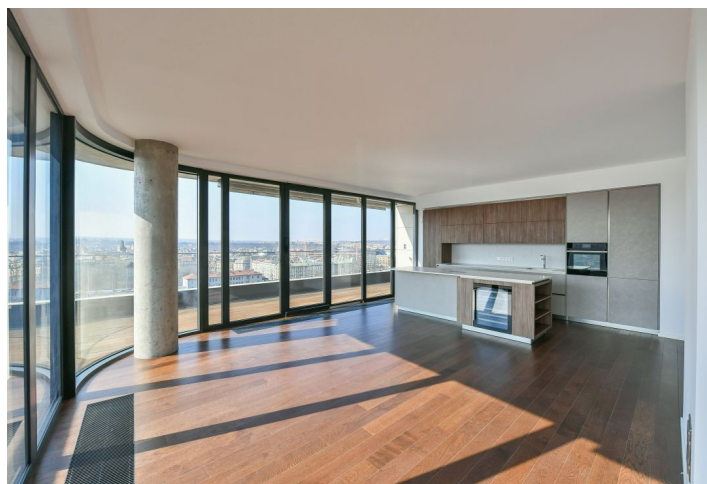
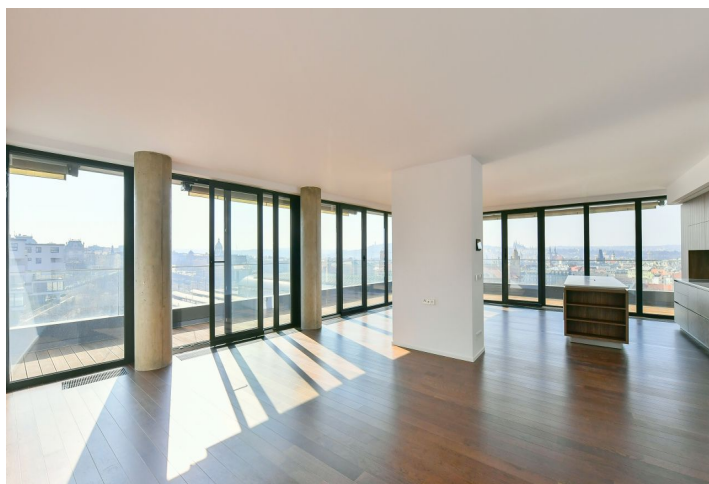
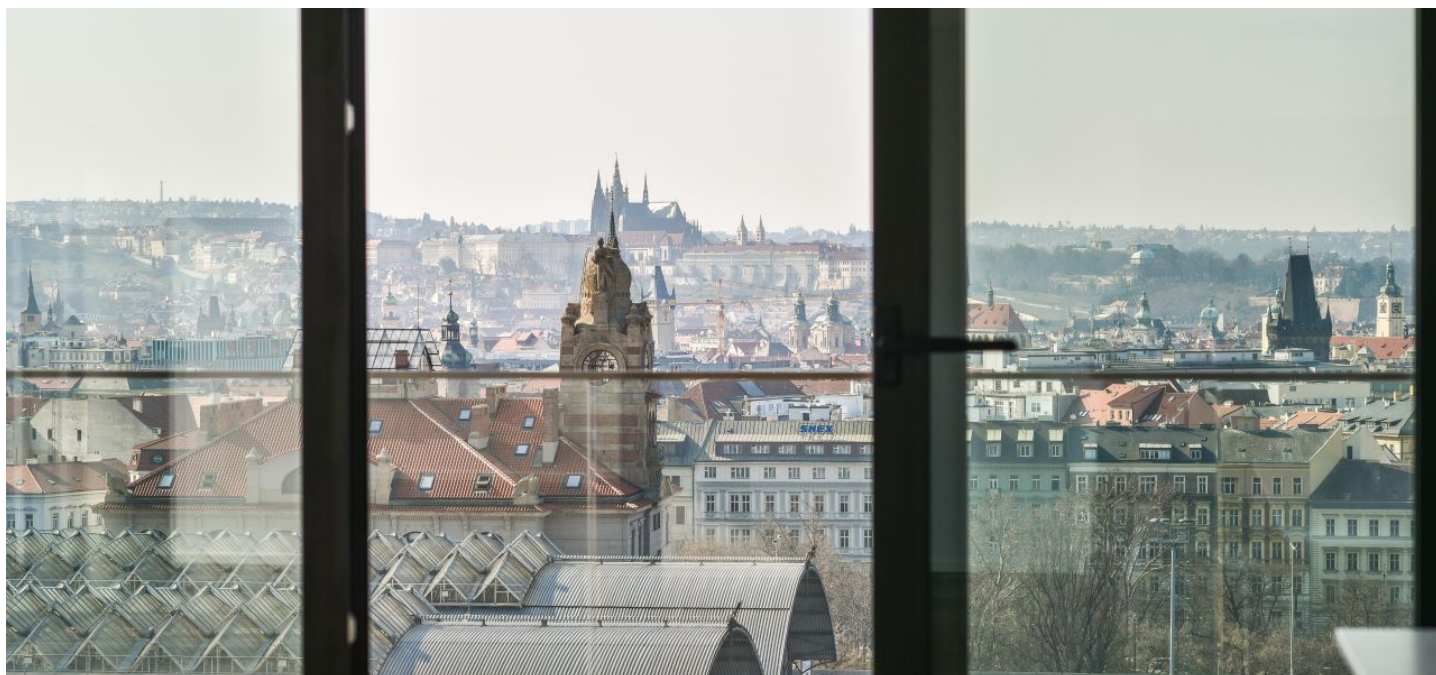




## Apartment Four-bedroom (5+kk)

Rented

230 m<sup>2</sup>, Prague 2, Vinohrady, Dudova





## Apartment Four-bedroom (5+kk)

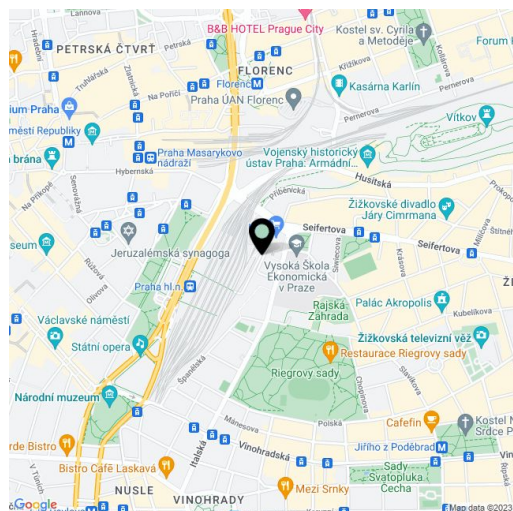
**Rented**230 m<sup>2</sup>, Prague 2, Vinohrady, Dudova

Total area	291 m <sup>2</sup>
Floor area*	230 m <sup>2</sup>
Terrace	61 m <sup>2</sup>
Parking	Three garage parking spaces.
Garage	Yes
Cellar	Yes
PENB	C
Reference number	36616
Available from	Immediately

Unique apartment with unobstructed panoramic views of Prague. Boasting a wraparound terrace and stunning views of the city, Prague Castle, and Petřín Hill, this brand new 4-bedroom 3-bathroom apartment is on the 6th topmost floor of the newly built Churchill Residence with a 24/7/365 reception, security, camera system, concierge services, and underground parking. Ideally located in the sought-after district of Vinohrady, within easy reach of the historical and cultural center of Prague and full amenities, mere steps from the University of Economics, just moments from popular Riegrovy Sady Park. Within walking distance of Wenceslas Square and the Muzeum and Hlavní nádraží metro stations.

The comfortable apartment features a 77 sq. m. living room with a fireplace, a dining area, and a fully fitted open plan kitchen, four bedrooms, three bathrooms (two are en-suite), two separate toilets, a utility room, and an entrance hall. The terrace is accessible from the living room and two bedrooms.

High standard equipment, cooling/heat recovery ventilation, hardwood floors, large-format tiles, security entry door, built-in wardrobes, steam shower, bidet toilet seats, oversized triple-glazed aluminum French windows, automatic exterior blinds, awning on the terrace, central heating, underfloor heating in the bathrooms, washer, dryer, video entry phone, alarm, satellite reception, spacious cellar storage unit (approx. 20 sq. m.), elevator. Three garage parking spaces are available at an additional fee. Monthly deposit for service charges CZK 20,000 (transferred to the tenant). Electricity is billed extra.



\* Area of the unit according to the Civil Code. The area consists of the sum total area of the entire unit bounded by perimeter walls.



