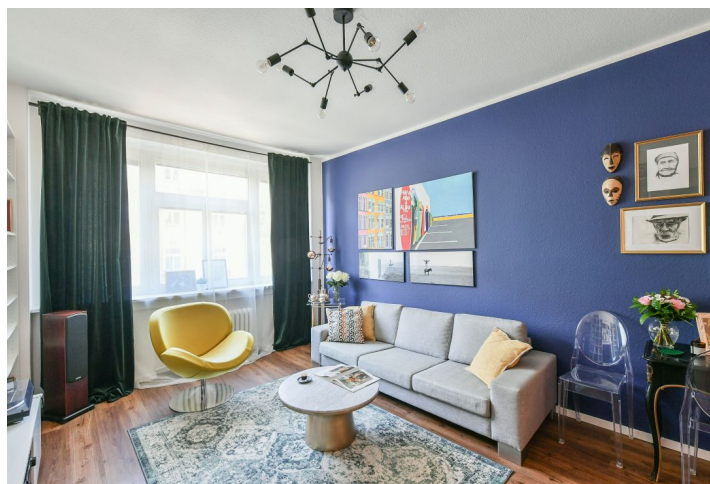




## Apartment One-bedroom (2+kk)

Sold

60.5 m<sup>2</sup>, Prague 7, Holešovice, Komunardů





## Apartment One-bedroom (2+kk)

**Sold**60.5 m<sup>2</sup>, Prague 7, Holešovice, Komunardů

Total area	61 m <sup>2</sup>
Parking	Possibility of taking over a lease of 1-2 parking spaces in an underground garage
Cellar	-
PENB	G
Reference number	36747

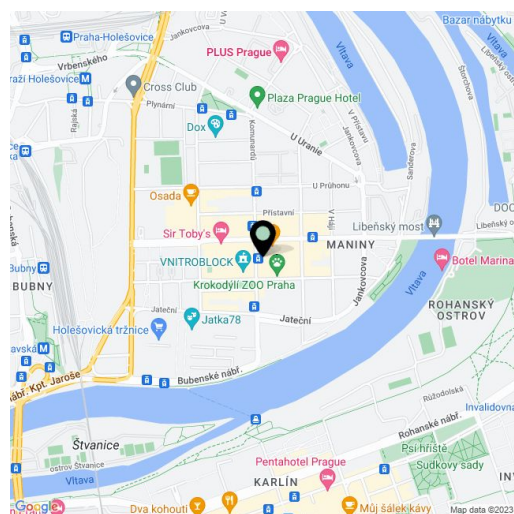
This bright, west-facing, recently renovated apartment is located on the 3rd floor of a well maintained apartment building from 1930 that stands in a popular part of Holešovice with a complete infrastructure and quick access to the city center.

The apartment consists of a living room with a kitchen and dining area, a bedroom, a bathroom (with a corner bathtub, sink, toilet, and connection for a washing machine and TV), and a hallway.

Facilities include quality vinyl flooring in the hallway and living room, laminate floors in the bedroom, tiles in the bathroom, **wooden windows** with insulated double-glazed panes and interior blinds, built-in wardrobes in the bedroom (with automatic lighting) and hallway, new sanitary ware, and a complete new kitchen (dishwasher, refrigerator, hood, electric oven, ceramic hob). Gas is supplied to the apartment. The building is undergoing a gradual reconstruction - risers and drainage pipes have already been repaired, and a **new glass elevator** (2021) and repairs to the facade are planned. There is a possibility of taking over the lease of 1-2 parking spaces in the underground garage on V Háji Street (5-minute walk).

Everything you need is within walking distance: from small shops and supermarkets to the large **Holešovice market**, bakeries, cafes, bistros, restaurants, a post office, medical services, a library, and cultural centers, such as the **DOX gallery**, the multifunctional **Vnitroblok** space, or the **La Fabrika theater**. Thanks to the nearby tram stop with many lines, the neighborhood is easily accessible. The ride to the Vltavská or Nádraží Holešovice metro stations takes five minutes.

Interior 60.5 m<sup>2</sup>.



\* Area of the unit according to the Civil Code. The area consists of the sum total area of the entire unit bounded by perimeter walls.