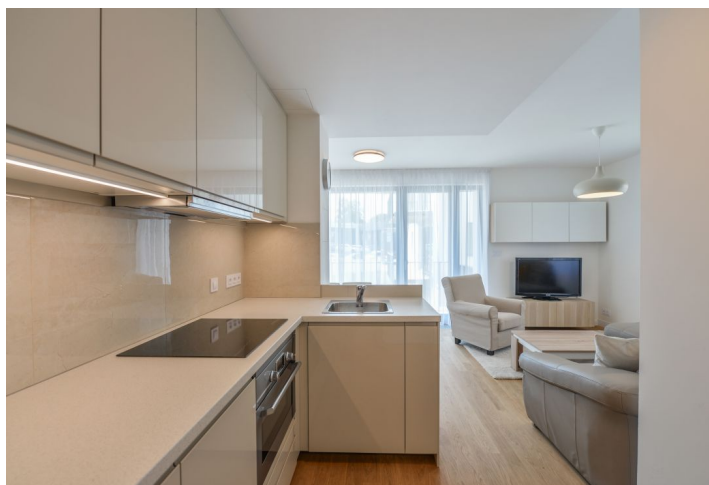




Apartment Two-bedroom (3+kk)

Sold

73 m², Prague 6, Veleslavín, Pod Dvorem





Apartment Two-bedroom (3+kk)

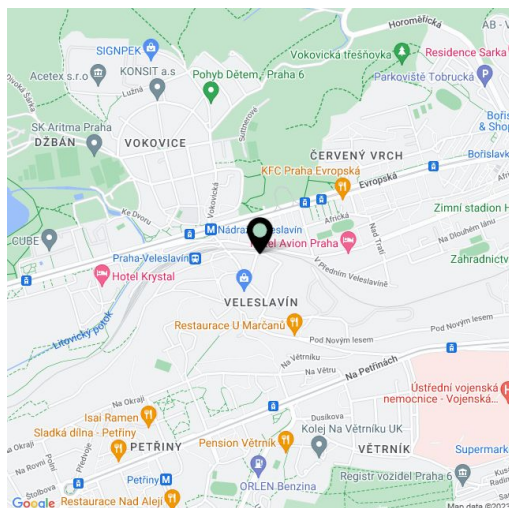
Sold73 m², Prague 6, Veveslavín, Pod Dvorem

Total area	82 m ²
Floor area*	73 m ²
Balcony	9 m ²
Parking	500 000
Garage	Yes
Cellar	Yes
PENB	G
Reference number	36832

This is a brand new, fully furnished 2-bedroom apartment with a spacious balcony, on the first floor in a contemporary residential project with underground parking. Situated near the Chateau Veveslavín, Divoká Šárka nature preserve and the Hvězda Park, on the border of Veveslavín and Ořeřhovka Prague residential areas, with quick access to the city center and amenities, with Nádraží Veveslavín metro station and trams just a few min. walk from the building. Conveniently located for the airport and international schools in Prague 6.

The interior features a living room with a fully fitted open plan kitchen and a dining area, two bedrooms - one with built-in wardrobes, a bathroom (bathtub, toilet), an additional toilet, and an entrance hall with built-in wardrobes. The balcony is accessible from the living room and one bedroom.

Quality equipment, **hardwood floors**, tiles, security entry door, washer, dishwasher, TV, **cellar**, lift, shared pram and bike storage in the building. One **garage parking** space is included. Monthly deposit for service charges and utilities: CZK 4000.



* Area of the unit according to the Civil Code. The area consists of the sum total area of the entire unit bounded by perimeter walls.



Apartment Two-bedroom (3+kk)

Sold

73 m², Prague 6, Veleslavín, Pod Dvorem

1	Hala	9,0 m ²
2	Obyvací pokoj + kk	22,7 m ²
3	Ložnice	12,9 m ²
4	WC	1,7 m ²
5	WC, Koupelna	5,5 m ²
6	Ložnice	17,9 m ²
Ostatní plochy, vnitřní příčky		4,0 m ²
Celková podlahová plocha		73,5 m ²
7	Balkon	8,5 m ²
Celková plocha		82,0 m ²
Garážové stání		
Sklep		

3+kk

82,0 m²

Residence U Veleslavínského zámku

800 888 111

prodej@uvz.cz

www.uvz.cz

Residence U Veleslavínského zámku, Praha 6, Veleslavín, Plochy jednotlivých místností a další informace o nabídce a soubor smluvných listů jsou podle pravidel orientace a seřazení pro možnost filtrace. Vybavení zahrnuje a vybavení kuchyní/obývacího prostoru jako nábytek, kuchyňská linka, vestavěná skříň a keramická sporáček, nové podlahové desky, dřevěná podlaha je speciálně ve zmlouvě Investor si vyhrazuje právo na změny.

1:125

NEOCITY