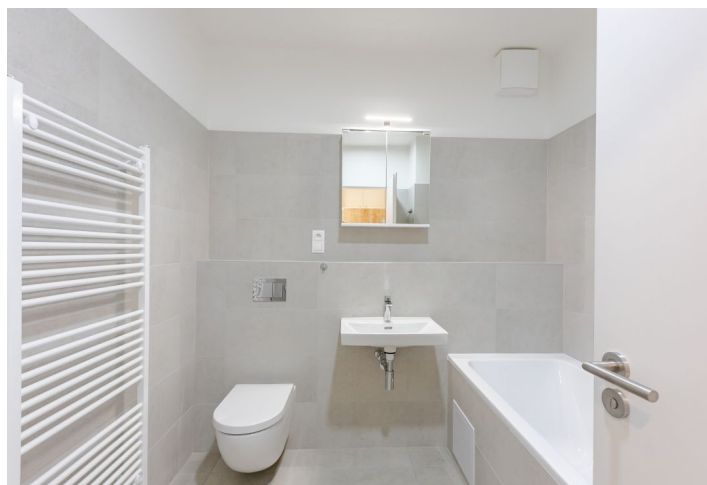
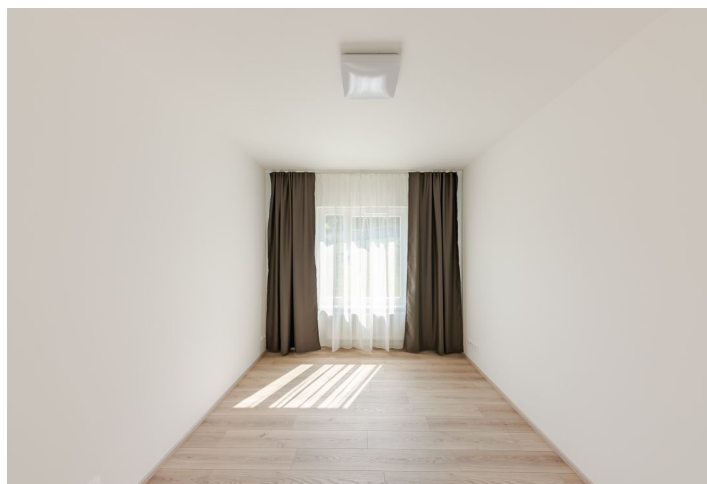




Apartment One-bedroom (2+kk)

€ 929 | CZK 23 500

50 m², Prague 10, Šterboholy, Pod Areálem





Apartment One-bedroom (2+kk)

€ 929 | CZK 23 500

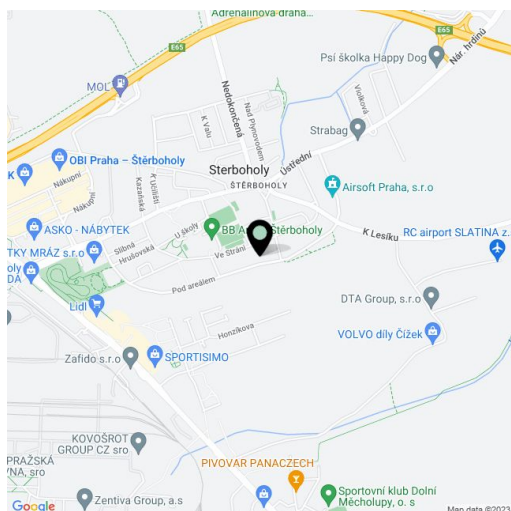
50 m², Prague 10, Štěrboholy, Pod Areálem

Total area	58 m ²
Floor area*	50 m ²
Terrace	8 m ²
Garden	90 m ²
Parking	-
Garage	Yes
Cellar	-
Service price	Monthly deposit for services, heating, and water CZK 2,500. Electricity - transfer to the tenant.
PENB	G
Reference number	36839
Available from	Immediately

This unfurnished apartment offering a terrace, a garden, and green views, on the ground floor of a building that is part of the contemporary Štěrboholy Residence, is in a quiet residential neighborhood in Prague 10. A location with quality amenities within easy reach, a quick connection to the city center, and great access to the Mladá Boleslav, Liberec and Hradec Králové highways. Local amenities include several shopping centers, the Hamr sports grounds incl. a nearby tennis and badminton hall, children's playgrounds, Hrušov Park, and bike and in-line trails. Within easy reach of Hostivař Park offering a vast dam and a golf course.

The interior features a living room with a fully fitted open plan kitchen and access to the **terrace** and **garden**, plus a bedroom also facing the garden. There is a bathroom including a bathtub and toilet, and an entrance hall with built-in wardrobes.

Laminate floors, tiles, security entry door, central heating, dishwasher, induction cooktop, microwave oven. An on-site **garage parking** space is included.



* Area of the unit according to the Civil Code. The area consists of the sum total area of the entire unit bounded by perimeter walls.