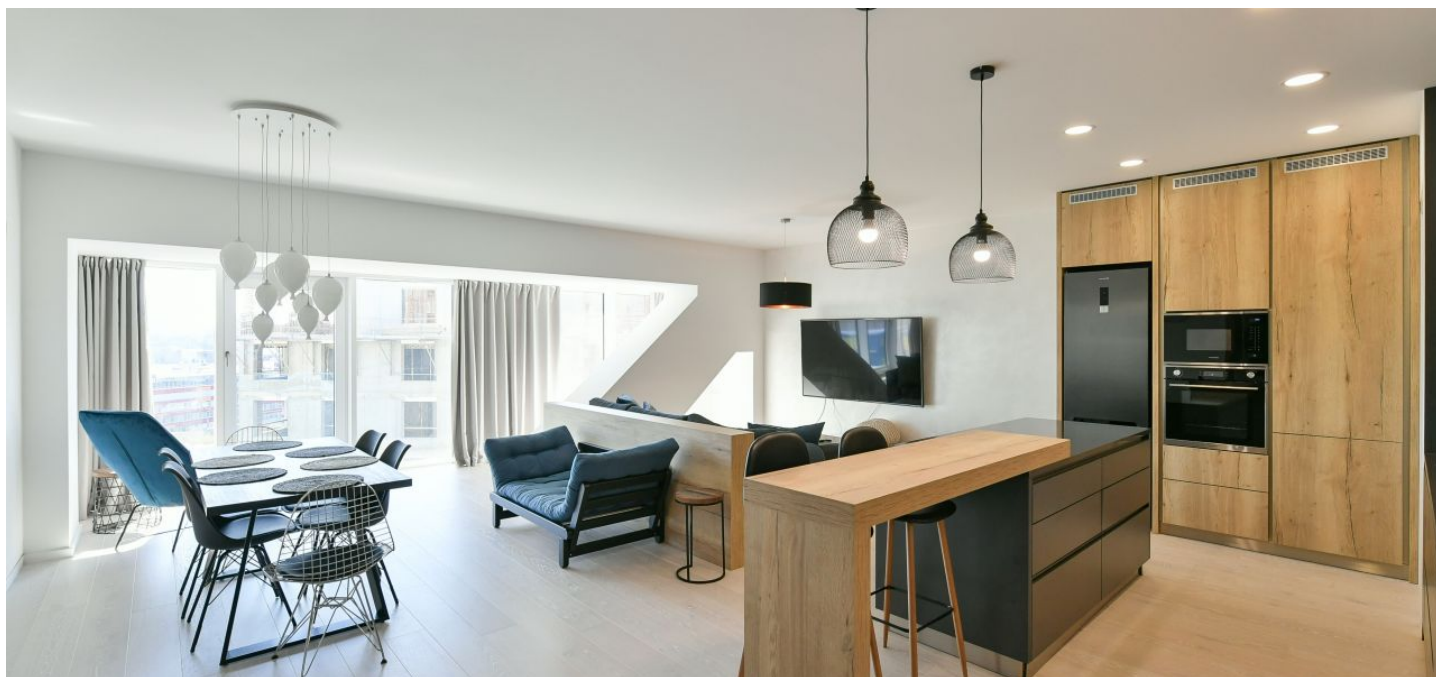




Apartment Two-bedroom (3+kk)

€ 2 316 | CZK 58 500

132 m², Prague 5, Smíchov, Gabrielská





Apartment Two-bedroom (3+kk)

€ 2 316 | CZK 58 500

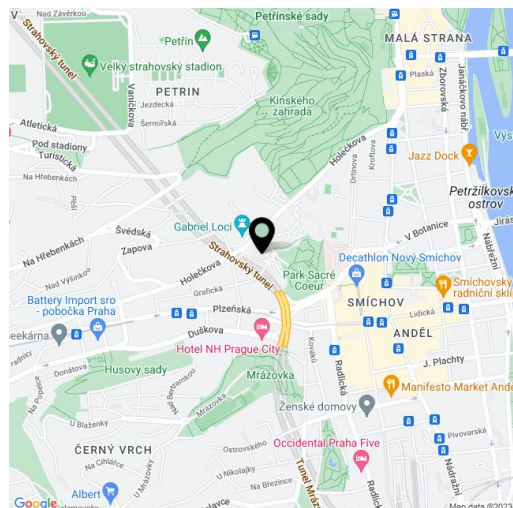
132 m², Prague 5, Smíchov, Gabrielská

Total area	132 m ²
Parking	Garage parking.
Garage	Yes
Cellar	Yes
Service price	Deposit for services, water, and heating CZK 11,000/month. Electricity - transferred to the tenant.
PENB	C
Reference number	36922
Available from	12.08.2024

Designer, furnished, completely equipped (incl. dishes) 2-bedroom maisonette with far-reaching views, on the 1st floor of the modern Residence Sacre Coeur 2 project. Located in Hřebenky, a highly sought-after residential area in close vicinity of Kinského Garden, Petřín Hill, and the Nový Smíchov shopping and entertainment center. This close secure part of the residence offers a 24/7 reception, underground garage parking, and a camera surveillance system. A quiet area with bus connections, a 10-minute walk through a park to the Anděl metro station, convenient to the Újezd tram stop and the French School, quick access to the city center. Bus stop in front of the building, direct connection to the airport.

On the lower level, the apartment offers an entry hall with built-in wardrobes. On the upper level is a living room with a fully fitted kitchen, 2 bedrooms, a bathroom with a bathtub and toilet, an additional separate toilet with a washroom, and a utility/laundry room with washer and dryer.

Luxury materials, wooden floors, tiles, anti-noise insulating triple-glazed windows, air-conditioning in the living room, blinds, security entry door, dishwasher, microwave oven, basic kitchenware, cellar. One garage parking space is included.



* Area of the unit according to the Civil Code. The area consists of the sum total area of the entire unit bounded by perimeter walls.