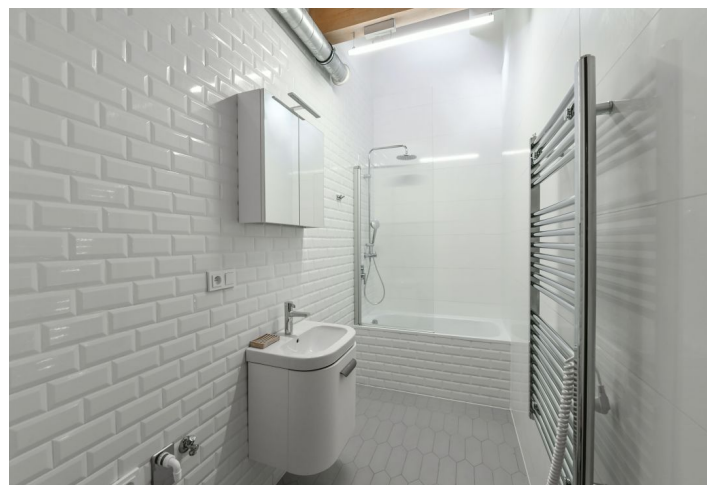




Apartment Two-bedroom (3+kk)

Rented

69 m², Prague 6, Břevnov, Šlikova





Apartment Two-bedroom (3+kk)

Rented

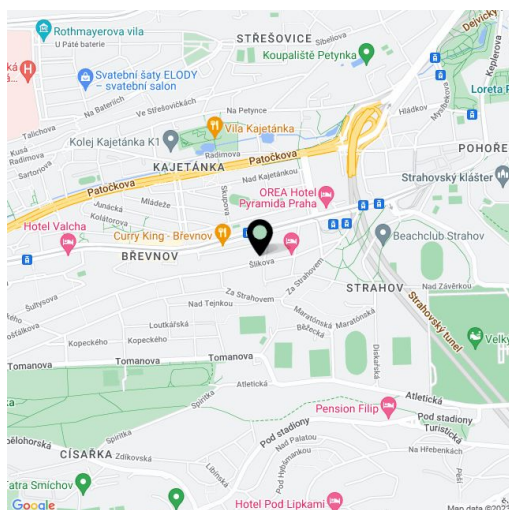
69 m², Prague 6, Břevnov, Šlikova

Total area	75 m ²
Floor area*	69 m ²
Balcony	6 m ²
Parking	-
Cellar	-
PENB	A
Reference number	36933
Available from	Immediately

Benefiting from a common terrace and garden, this is a quiet, fully furnished 2-bedroom attic flat with balcony on the 3rd floor of a modern residence - a completely renovated residential building from 1903 with preserved original features and a landscape courtyard garden. Located within walking distance of the Prague Castle, near the Kajetánka and Ladronka Parks, in a sought after residential area with excellent amenities and easy access to metro, the city center and Václav Havel Airport.

The interior features a living room with a fully fitted open plan kitchen and a dining area, balcony facing the **terrace** and **garden**, two separate bedrooms, a bathroom including a shower, a separate toilet, and an entrance hall.

Marmoleum and tile floors, security entry door, wooden interior doors, beams, French and skylight windows, underfloor central heating, induction cooktop, dishwasher, microwave oven, kitchenware, kettle, toaster, WiFi, satellite reception. No lift. Deposit for service charges, utilities and the Internet: CZK 3,000/month. Available from mid March 2021.



* Area of the unit according to the Civil Code. The area consists of the sum total area of the entire unit bounded by perimeter walls.