



Land

938 m², Prague 4, Šeberov, V Březí

Sold





Land

938 m², Prague 4, Šeberov, V Březi

Sold

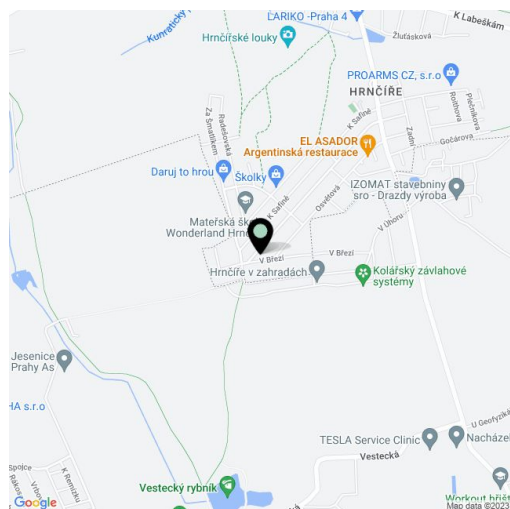
Price per sq. m.	12 793 CZK
Total area	938 m ²
Land type	Other
Reference number	36995

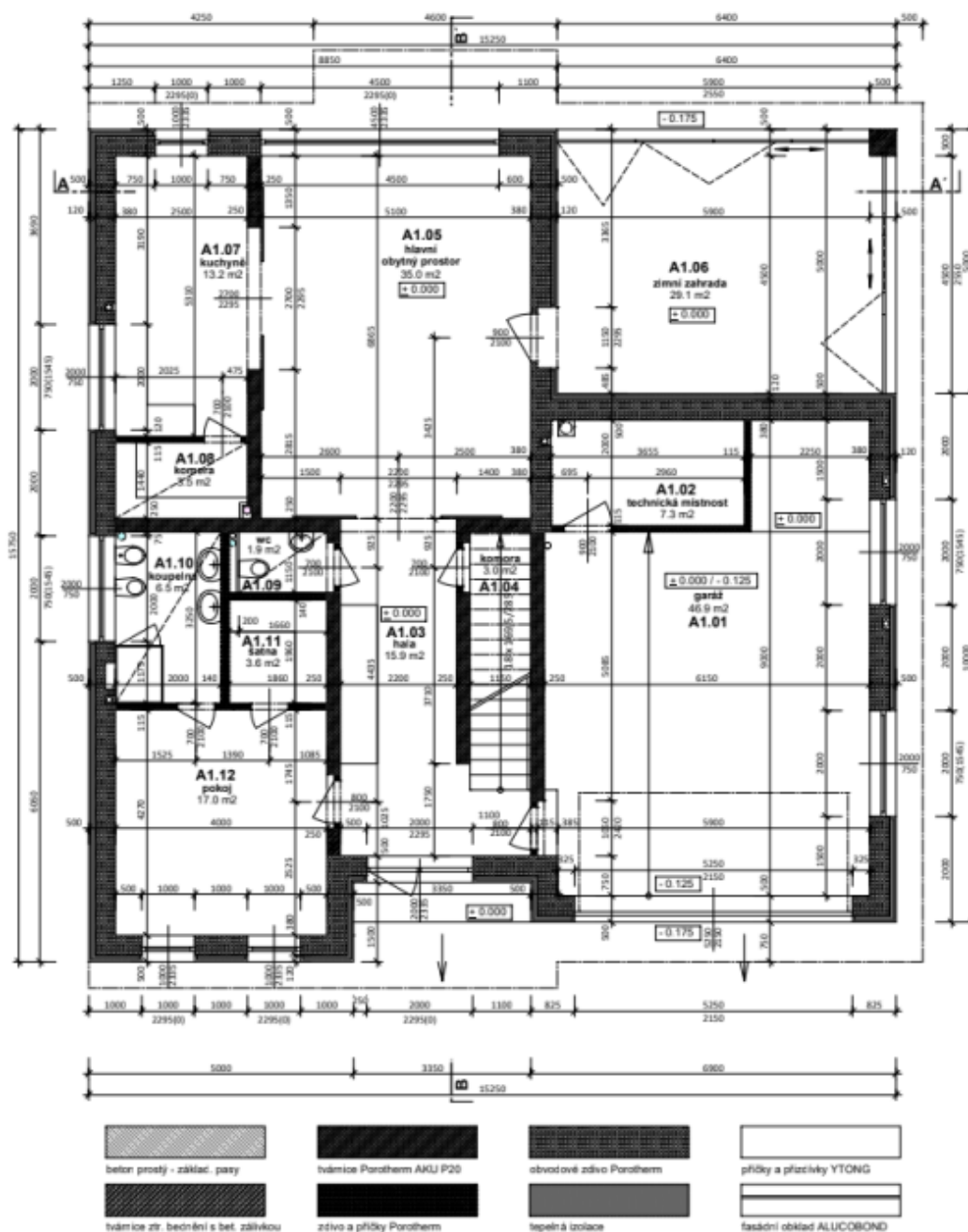
This south-facing flat plot of land offers an ideal opportunity to build a family house in a newly emerging district on the border of Šeberov (Hrnčíř) and Vestec in Prague 4, where a development of modern generously designed houses surrounded by greenery is planned.

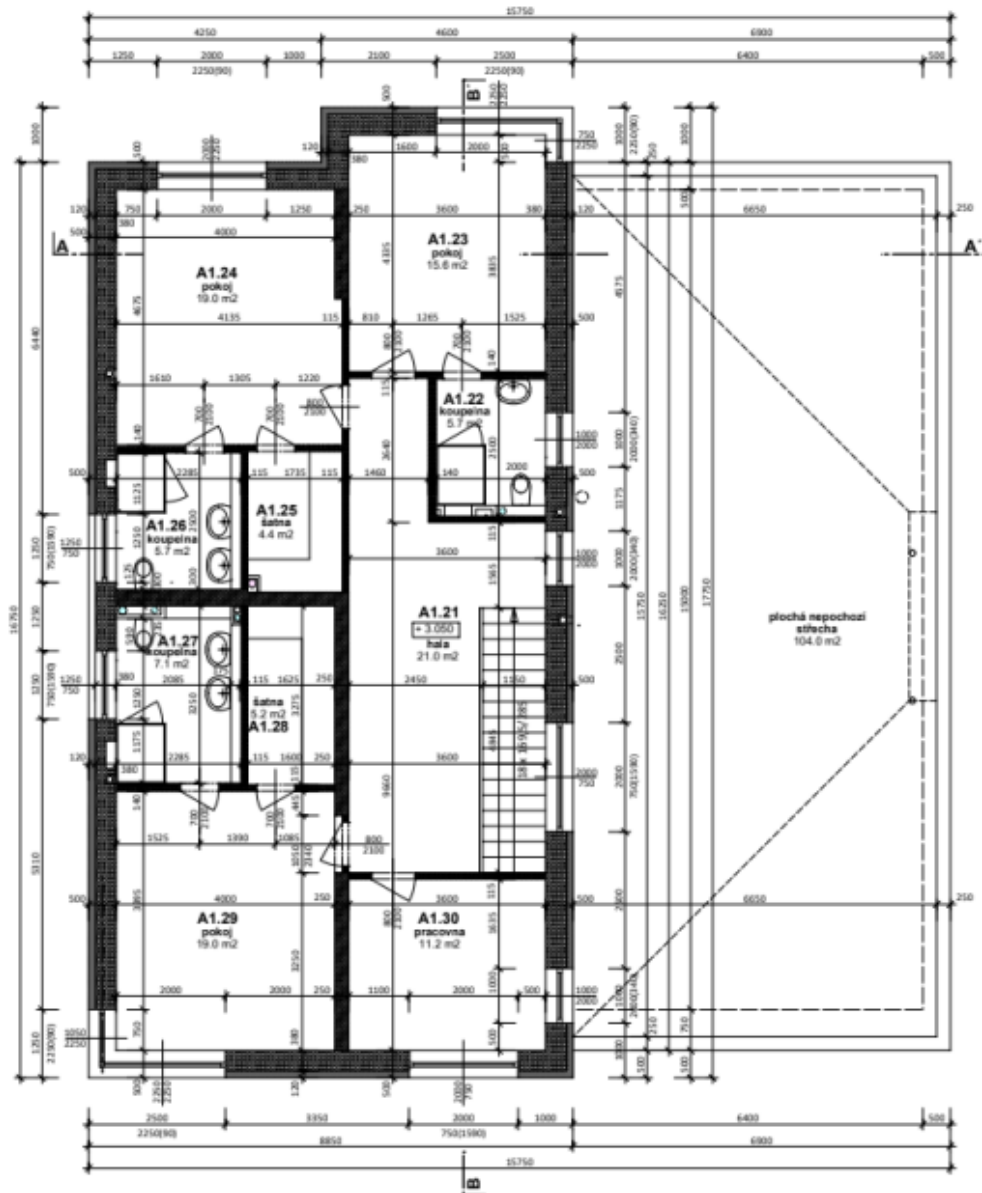
With an area of 938 sq. m., this offer of land comes with a **valid building permit** for the construction of a modern house with a useable area of approximately 300 sq. m. and **all utilities** hooked up to it. The buildability of the land **35%**.

The plot is located in a nice and **quiet place** between residential areas in a location with excellent transport links (30-minute drive to the center of Prague, 10 minutes to the D1 highway or to the Chodov or Opatov metro stations). Complete civic amenities, including supermarkets and primary and elementary schools, are within a 4-minute drive (Hrnčíře, Šeberov, Vestec). There are many sports grounds, **playgrounds**, and ponds in the vicinity.

Total area 938 m².







beton strop - základ, pasy	tvárnice Porotherm AKU P20	otvácivé zdivo Porotherm	příčky a přízlivky YTONG
tvárnice ztv. betonní s bet. záhlvkou	zdivo a příčky Porotherm	tepelná izolace	fasádní obklad ALUCOBOND