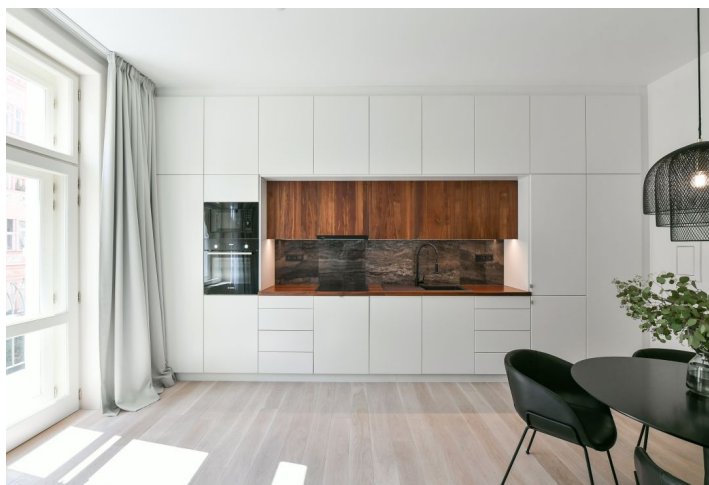




Apartment Two-bedroom (3+kk)

Rented

97 m², Prague 2, Vinohrady, Na Švihance





Apartment Two-bedroom (3+kk)

Rented

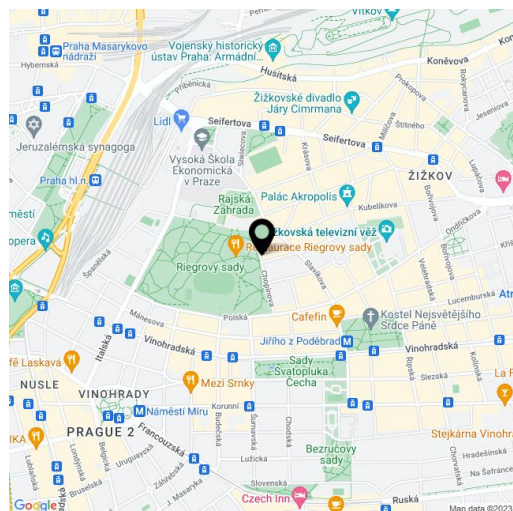
97 m², Prague 2, Vinohrady, Na Švihance

Total area	105 m ²
Floor area*	97 m ²
Terrace	8 m ²
Parking	-
Cellar	-
Service price	Monthly deposit for service charges, heating, and water approx. CZK 5,200. Electricity will be transferred to the tenant.
PENB	E
Reference number	37029
Available from	Immediately

This completely newly refurbished designer apartment benefits from a great location mere steps from Riegrovy Sady Park. Fully furnished, with 2 bathrooms and a balcony, the apartment is set on the third floor of a recently completely renovated Art Nouveau building with an elevator. Located in a highly sought-after residential area with very quick access to the city center, just a short walk from Jiřího z Poděbrad Square with a metro station, quality amenities, and a popular regular produce market.

The interior features a living room with a fully fitted open plan kitchen and **balcony** facing the street, a master bedroom with an en-suite walk-in shower, built-in wardrobes, and fitted **walk-in closet**, a second bedroom/office with a **walk-in closet**, plus a shower room with a toilet. There is an additional separate toilet, a laundry room, and an entrance hall.

Custom-made equipment, high ceilings, large windows, designer furniture and light fixtures, **hardwood floors**, tiles, central heating, washer, dryer, dishwasher, microwave oven. Available from July 2023.



* Area of the unit according to the Civil Code. The area consists of the sum total area of the entire unit bounded by perimeter walls.