



Retail space

63 m², Prague 6, Dejvice, Lindleyova

Sold



**Retail space**63 m², Prague 6, Dejvice, Lindleyova**Sold**

Total area	63 m ²
Parking	-
PENB	B
Reference number	37077

Retail space with an entrance from the street on the ground floor of a newly built residential complex in sought-after Prague 6.

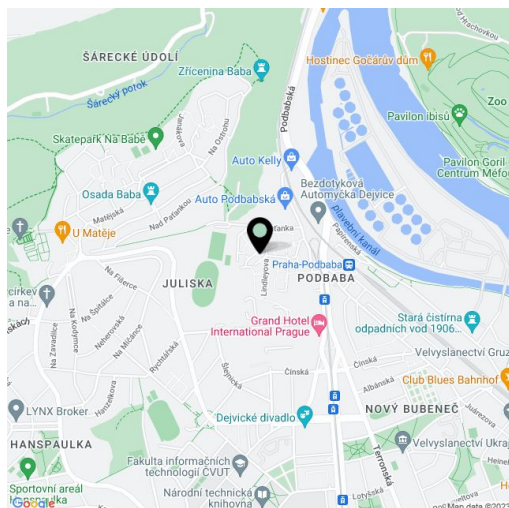
The square commercial area with a glazed street-level entrance has two entries to a back room. One of the adjoining rooms has storage space and a separate toilet, the other has a cleaning room and a **corner kitchen**.

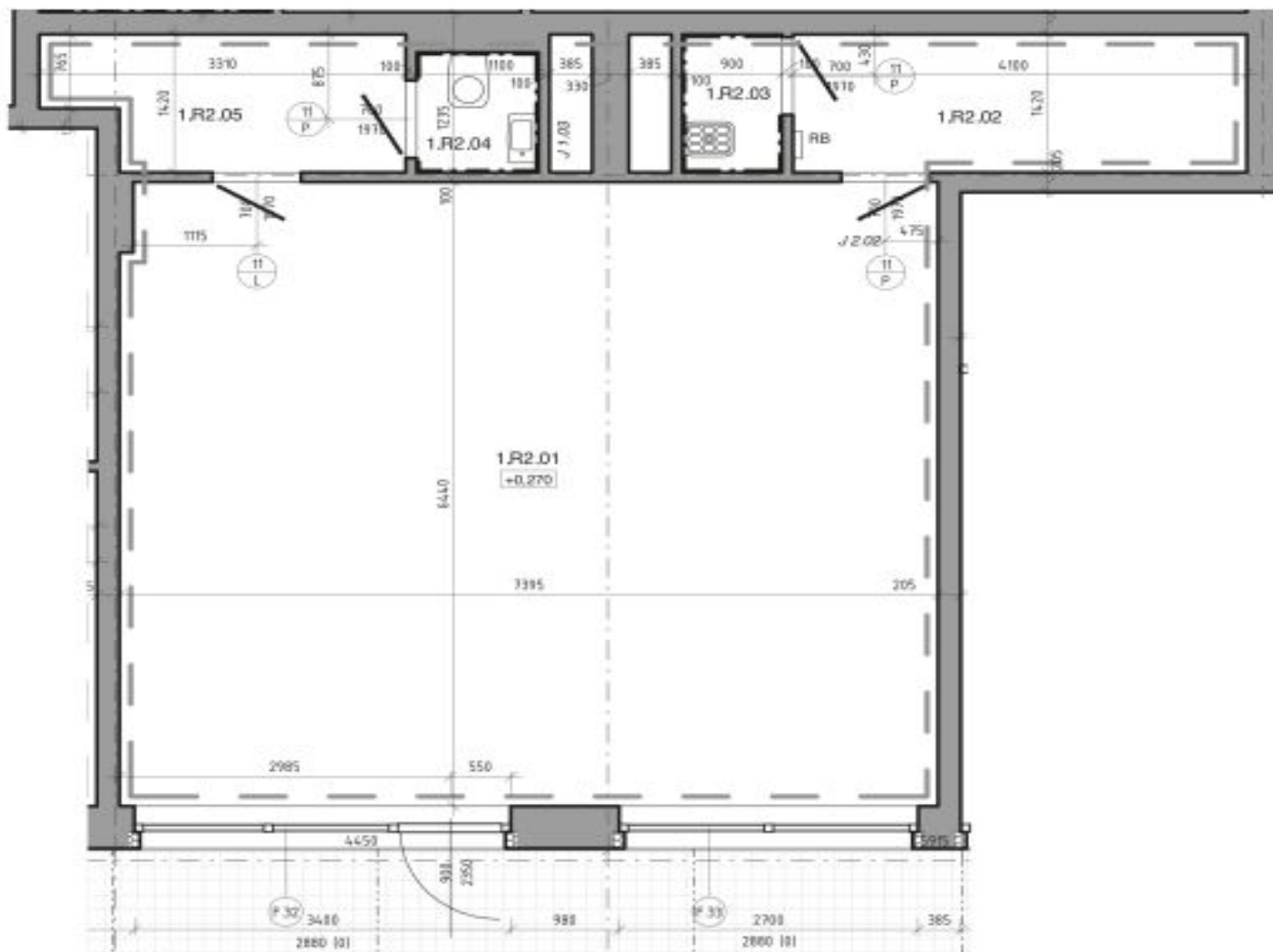
The premises are **tiled**, and glazed areas are equipped with **security film and blinds**. Heating is central. The space is equipped with a kitchen and **sound system** (not included in the price), a computer network, an alarm system, and a connection to a central security desk.

Podbaba location is a residential zone with good transport accessibility and relatively high population density, and is therefore an ideal **space for business, especially in the field of trade or services**. There are also several guesthouses, a supermarket, and the Dukla Prague stadium. Within walking distance (5 minutes walk) is a public transport stop.

Possibility to deduct 21% VAT.

Floor area 63 m².





OZNAČENÍ MÍSTNOSTI			NÁZEV	PLOCHA m ²
PODL.	BYT	Č.M.		
R2				
1	R2	01	KOMERČNÍ PLOCHA	4,7,5 m ²
1	R2	02	SKLAD	5,8 m ²
1	R2	03	ÚKLIDOVÁ MÍSTNOST	1,3 m ²
1	R2	04	WC Komerce	1,4 m ²
1	R2	05	PŘEDSÍŇ	4,2 m ²
				60,2 m ²