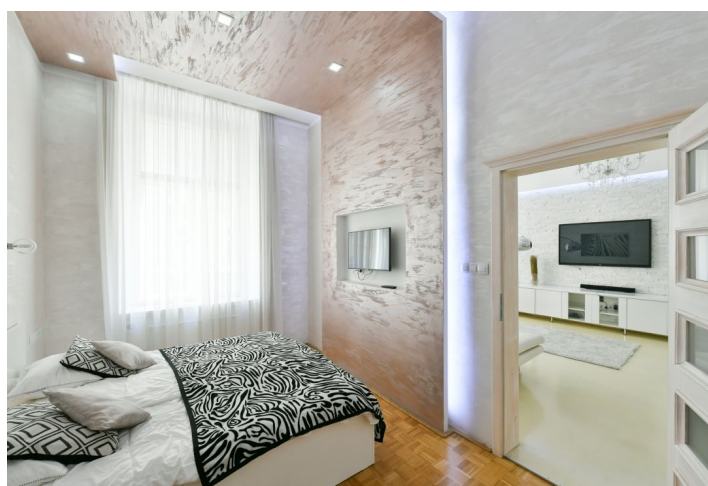




## Apartment Two-bedroom (3+1)

€ 1 536 | CZK 38 000

96 m², Prague 1, Nové Město, U Půjčovny





# Apartment Two-bedroom (3+1)

€ 1 536 | CZK 38 000

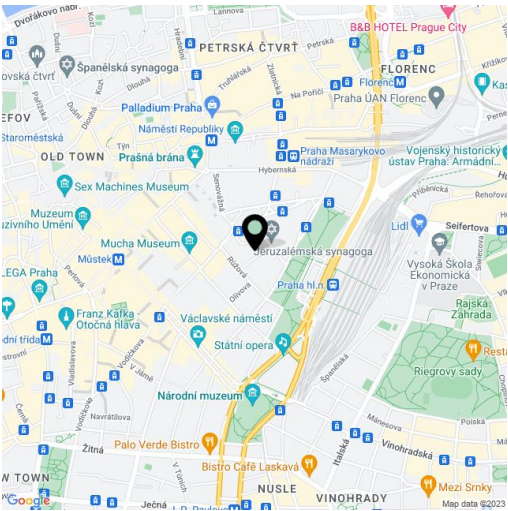
96 m², Prague 1, Nové Město, U Půjčovny

Total area	96 m²
Parking	-
Cellar	Yes
PENB	G
Reference number	37081
Available from	Immediately

This is a completely newly refurbished and furnished 2-bedroom apartment with possibility of parking, on the first floor of a well maintained renovated traditional building with a lift. Situated on a quiet street just a few steps from the Main Train Station and a few blocks from Wenceslas Square with all three Prague metro lines, within easy reach of full amenities and services. Great central location for people who enjoy city life and the convenience of being able to walk to just about everywhere.

The interior features a living room with a dining area, a fully fitted kitchen with a pantry / utility room, a master bedroom with a fitted **walk-in closet**, a second bedroom, a shower room, a separate toilet with a bidet shower, a hall and an entrance hall with built-in wardrobes.

Built-in storage, high ceilings, large windows, **solid wood parquet floor**, tiles, poured concrete floor, recessed lighting, roller blinds, dishwasher, microwave oven, three TV sets, **cellar**. Monthly deposit for service charges and water: CZK 1,500. Utilities are billed separately.



\* Area of the unit according to the Civil Code. The area consists of the sum total area of the entire unit bounded by perimeter walls.