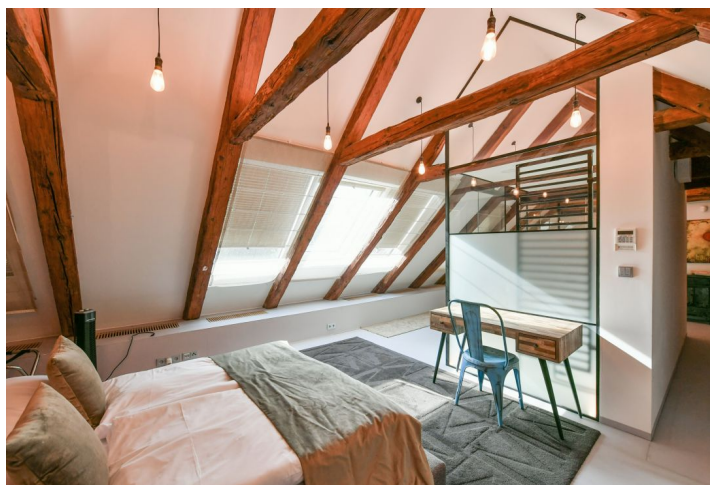
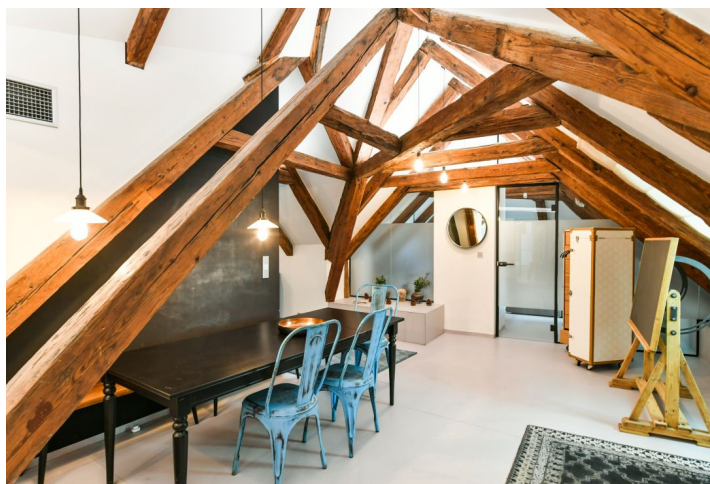




Apartment Three-bedroom (4+kk)

Rented

199 m², Prague 1, Nové Město, V Jirchářích





Apartment Three-bedroom (4+kk)

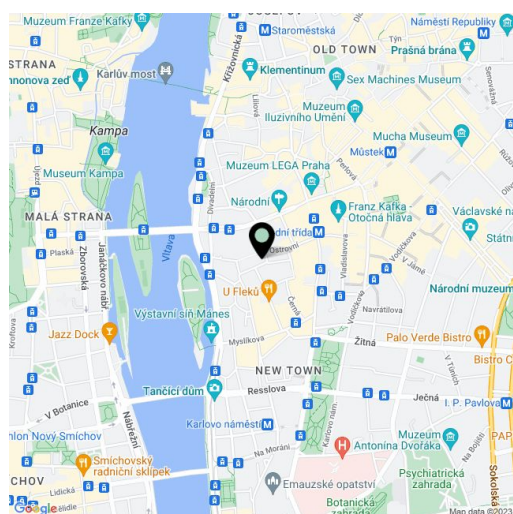
Rented199 m², Prague 1, Nové Město, V Jirchářích

Total area	199 m ²
Parking	-
Cellar	-
Service price	6285 CZK Monthly
PENB	G
Reference number	37153
Available from	Immediately

This attractive, fully furnished 3-bedroom 2-bathroom attic apartment is on the second floor of an historic residential building with no lift. Conveniently located in a quiet street in the historic center of Prague, just moments from the Vltava riverbank, the National Theatre, the Žofín Island, multiple tram links and Národní třída metro station, with complete amenities in the immediate vicinity, and within walking distance of Wenceslas Square.

The interior features a living room, a fully fitted kitchen with a dining area, a master bedroom with a glassed in bathroom (walk-in shower, bidet, toilet) and built-in storage, two further bedrooms, a family bathroom (walk-in shower, toilet), a utility room, a storage room, an additional separate toilet, and an entrance hall.

Air-conditioning, hardwood floors, wooden windows, carpets, exposed wooden beams, security entry door, gas boiler, washing machine, dishwasher, microwave oven, TV, master switch, video entry phone, alarm. Monthly deposit for service charges and water: CZK 1000 for one person. Gas and electricity are billed separately.



* Area of the unit according to the Civil Code. The area consists of the sum total area of the entire unit bounded by perimeter walls.

