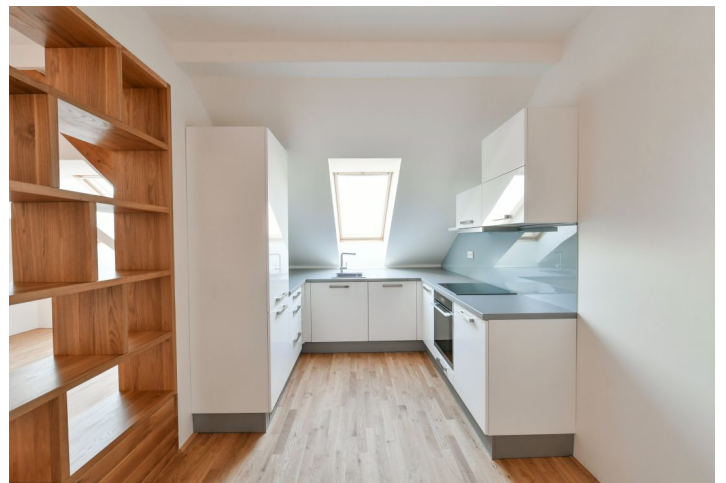




Apartment One-bedroom (2+kk)

Rented

67 m², Prague 2, Vyšehrad, Vratislavova





Apartment One-bedroom (2+kk)

Rented

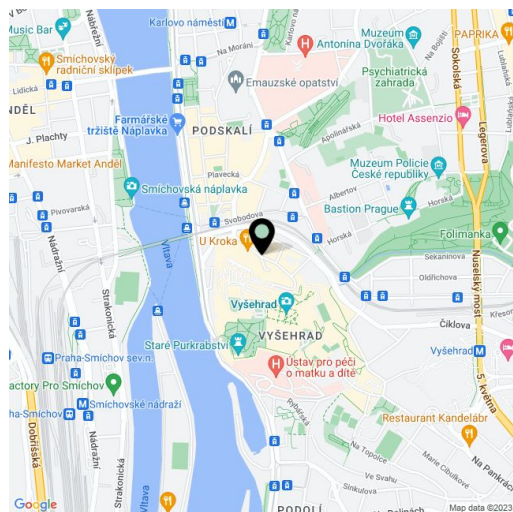
67 m², Prague 2, Vyšehrad, Vratislavova

Total area	67 m ²
Parking	-
Cellar	-
Service price	Monthly deposit for services and water CZK 600 per person. Electricity - transferred to the tenant.
PENB	G
Reference number	37155
Available from	Immediately

Attic apartment below Vyšehrad Castle gardens. This fully refurbished apartment is on the 4th floor of a well-maintained apartment building with no elevator. Set on a quiet street below a large green park and near a children's playground, within walking distance of the Vltava embankment, with quick tram connections to the city center and the Palackého/Karlovo náměstí metro station, and with full amenities within easy reach.

The apartment features a living room with a dining area and a fully fitted open plan kitchen separated by a partition, a bedroom, a bathroom with a walk-in shower and a toilet, and an entrance hall with built-in wardrobes.

Hardwood parquet floors, large-format tiles, security entry door, electric boiler (for heating and hot water), dishwasher, video entry phone.



* Size of the unit according to the Housing Act.

The area consists of the sum total of the internal area of every room.