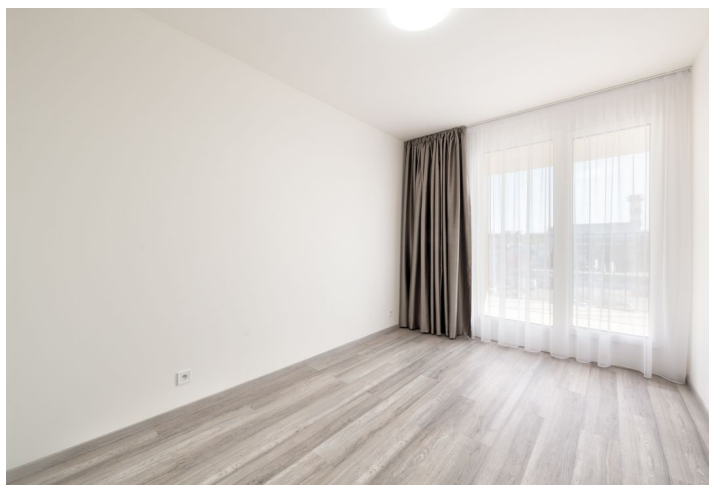
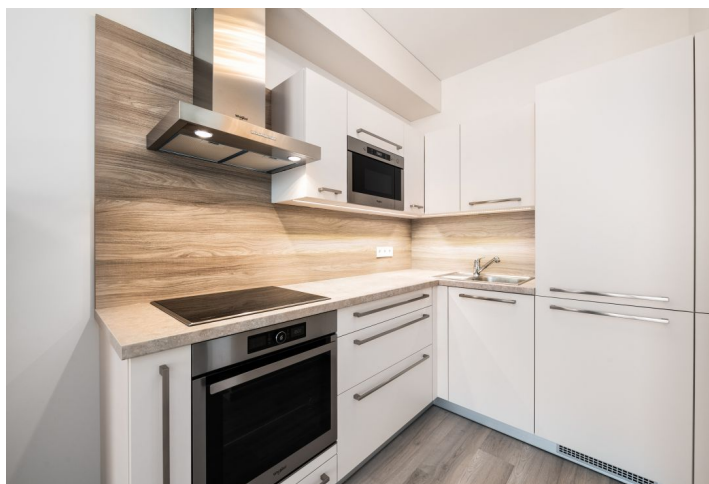




Apartment One-bedroom (2+kk)

Rented

40 m², Brno-město, Brno - Královo Pole, Střední





Apartment One-bedroom (2+kk)

Rented

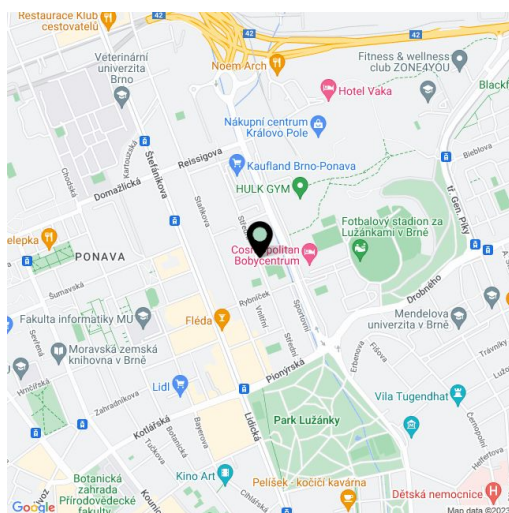
40 m², Brno-město, Brno - Královo Pole, Střední

Total area	52 m ²
Floor area*	40 m ²
Terrace	12 m ²
Parking	Garage parking space
Garage	Yes
Cellar	-
Service price	Monthly deposit for service charges and utilities: CZK 6,000
PENB	B
Reference number	37240
Available from	01.10.2025

This is an unfurnished 1-bedroom apartment with a 12 m² terrace, on the sixth floor in the newly constructed low-energy Ponavia Residence. Set in close vicinity of the Lužánky Park with a sports and wellness center, within easy reach of the city center and complete services and amenities, just minutes from a supermarket and the Královo Pole shopping mall. The location is easily accessible by public transport.

The interior features a living room with a fully fitted open plan kitchen, a bedroom, a bathroom including a walk-in shower, a separate toilet, a **walk-in closet**, a **terrace**, and an entrance hall.

Floor-to-ceiling windows, built-in wardrobes, floating floors, tiles, security entry door, triple glazed plastic windows, curtains, LED lighting fixtures, washing machine, Whirlpool kitchen appliances, microwave oven, lift, bike / pram storage. A garage parking space is included.



* Area of the unit according to the Civil Code. The area consists of the sum total area of the entire unit bounded by perimeter walls.