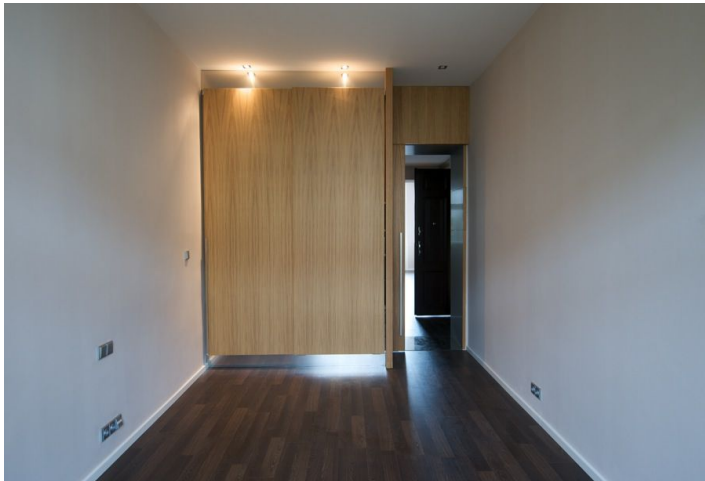




## Apartment One-bedroom (2+kk)

Rented

51 m<sup>2</sup>, Prague 10, Vršovice, Kodaňská





## Apartment One-bedroom (2+kk)

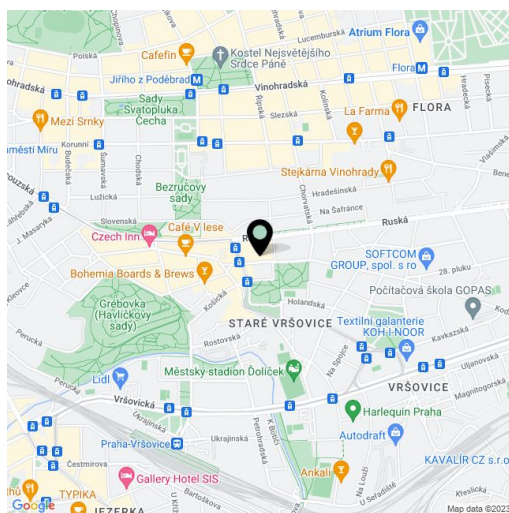
**Rented**51 m<sup>2</sup>, Prague 10, Vršovice, Kodaňská

Total area	61 m <sup>2</sup>
Floor area*	51 m <sup>2</sup>
Balcony	10 m <sup>2</sup>
Parking	Garage parking included.
Cellar	-
PENB	G
Reference number	3726
Available from	Immediately

**Attractive, fully furnished architect designed 1-bedroom t with a balcony on the 4th floor of a fully renovated historic building with lift close to Heroldovy Sady Park. Steps from tram and bus stop, 2 stops to Náměstí Míru metro station.**

The apartment features living room with fully fitted open plan kitchen, bedroom with walk-in closet, bathroom, and entry hall. Built-in wardrobes, wood floors, washer, dishwasher, ceramic cooktop, Internet, satellite TV connection, video intercom. One parking spot in the automatic parking system included.

Deposit for utilities CZK 5000/mo. Security cameras in the building. Available from April 2018.



\* Area of the unit according to the Civil Code. The area consists of the sum total area of the entire unit bounded by perimeter walls.

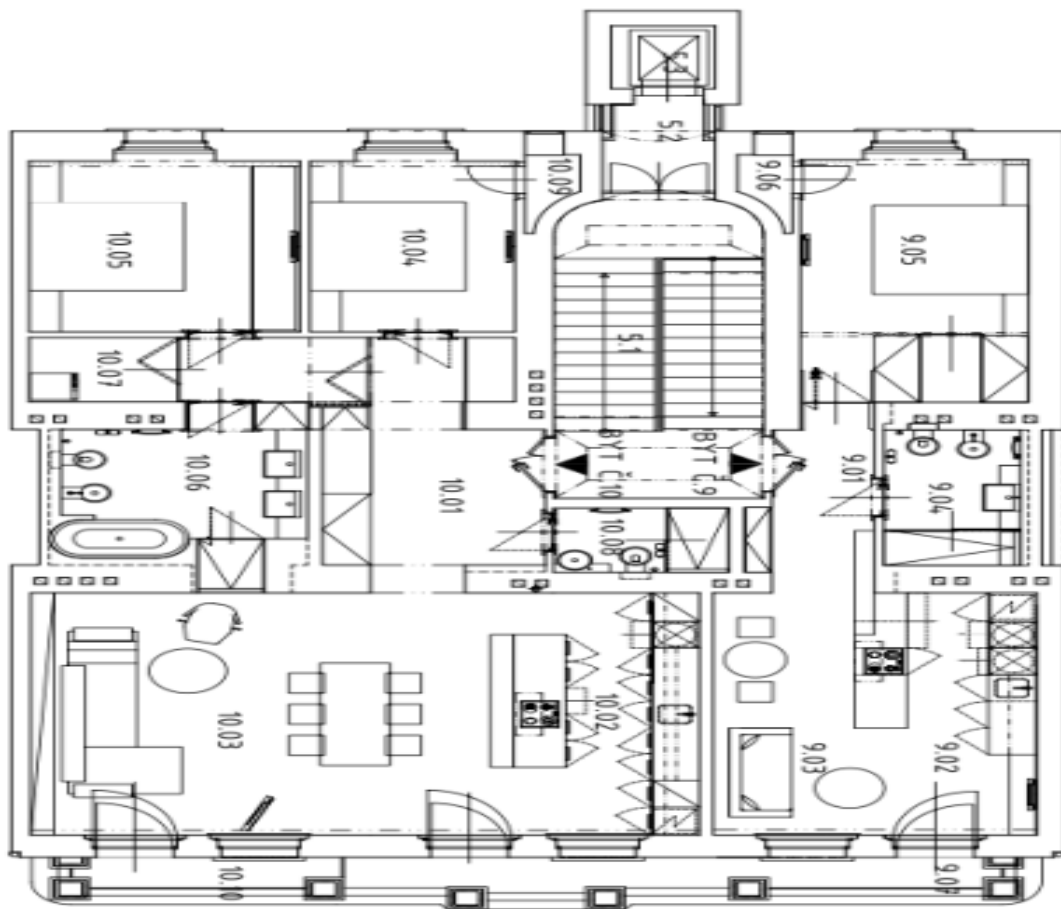


# Apartment One-bedroom (2+kk)

51 m<sup>2</sup>, Prague 10, Vršovice, Kodaňská

Rented

DISPOZICE 5.NP



TABULKA MÍSTNOSTÍ :

OZNAČENÍ NA VÝKRESĚ	ÚČEL MÍSTNOSTI	POUL. PLOCHA (m <sup>2</sup> )
<b>SPOLÉČNÉ PROSTORY</b>		
CELKOVÁ POULANOVÁ PLOCHA		22,8
5.1	SCHODISTOVÝ PROSTOR	10,00
5.2	CHODBA	2,90
5.3	VÝTĚMOVÁ ŠAKHTA	1,90
<b>BYT č.9</b>		
CELKOVÁ POULANOVÁ PLOCHA BYTU č.5		61,3
9.01	PŘEDSÍŇ, CHODBA	5,96
9.02	KUCHYŇSKÝ KOUT	11,60
9.03	POKOJ	11,56
9.04	KOUPELNA + WC	5,35
9.05	POKOJ	16,30
9.06	ŠATNA	0,86
9.07	BAKON	9,7
<b>BYT č.10</b>		
CELKOVÁ POULANOVÁ PLOCHA BYTU č.10		109,6
10.01	PŘEDSÍŇ, CHODBA	16,26
10.02	KUCHYŇSKÝ A JÍDELNÍ KOUT	21,90
10.03	POKOJ	25,0
10.04	POKOJ	10,90
10.05	POKOJ	14,27
10.06	KOUPELNA	10,46
10.07	KOUPELNA	2,45
10.08	KOUPELNA + WC	3,35
10.09	ŠATNA	0,86
10.10	BAKON	4,2

M 1:100