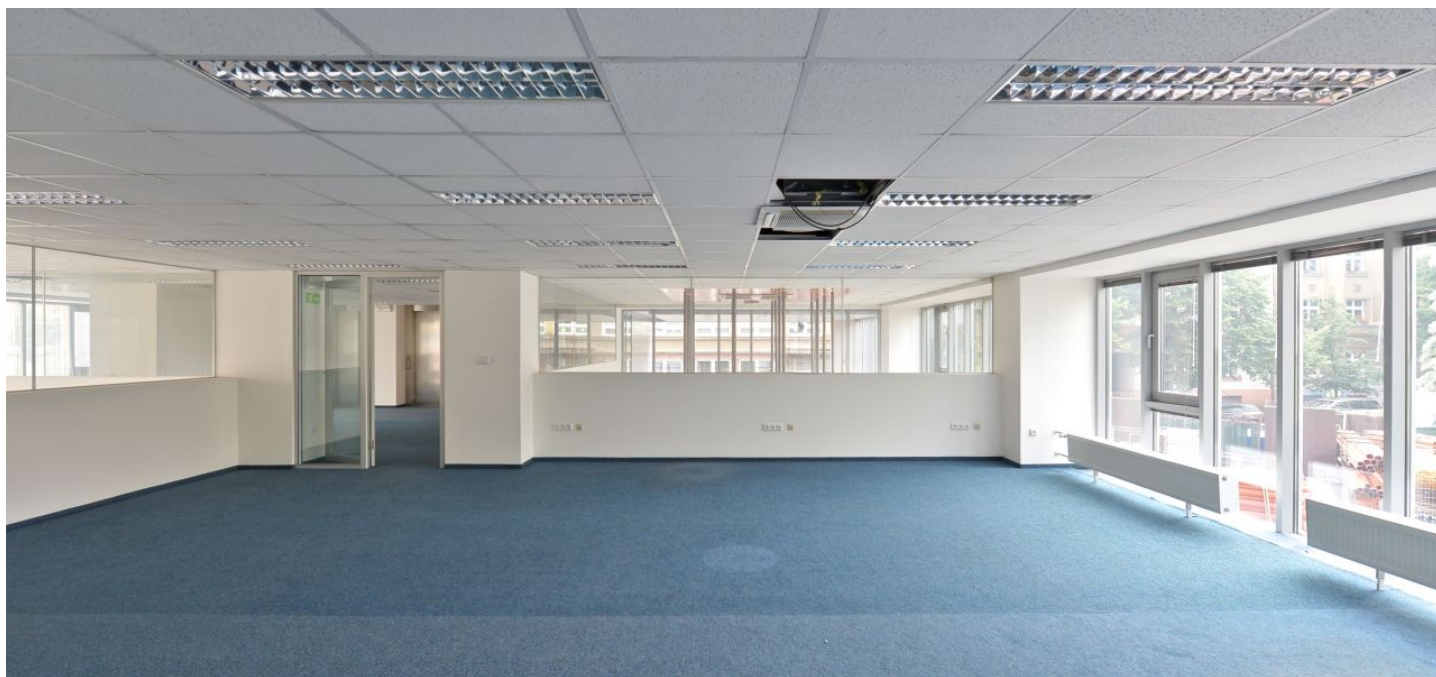




Office space

Rented

Praha 7, Holešovice, Jankovcova



**Office space****Rented**

Praha 7, Holešovice, Jankovcova

Service price	85 CZK monthly per m ²
Available area	189 m ²
Cellar	-
Parking	110 EUR / ps / month
PENB	G
Reference number	37273

Office space for lease on the 2nd floor in administrative complex, which consists of five buildings with 20,000 m² of office space and 5000 m² of warehouse/storage place.

Location:

In close vicinity of tram stops with direct connections to metro stations Palmovka (line B), Nadraží Holešovice and Vltavská (line C). Good access by car, connection to D1, D8, D10 highways.

Features and Services:

- Reception and cafeteria on the ground floor
- 24/7 security
- Air-conditioning
- Internet and telephone connection
- Carpets
- Integrated lighting in suspended ceilings
- 6 passenger lifts
- Separate WCs and kitchenette
- Parking in the area

Rental and service charges are listed without VAT. Lessee pays no commission.

