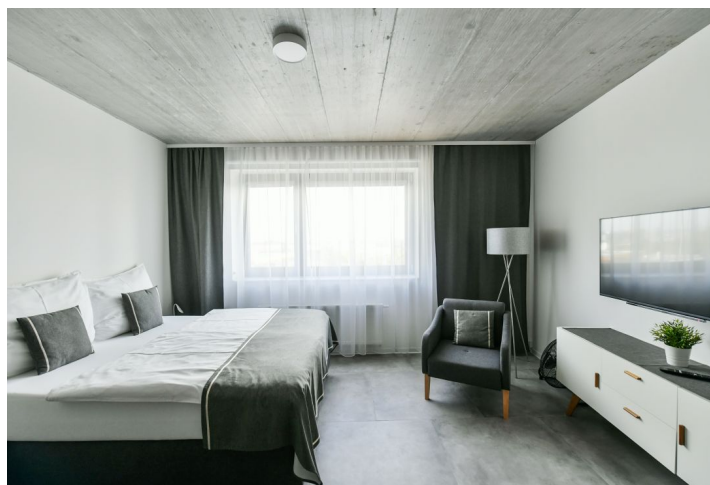
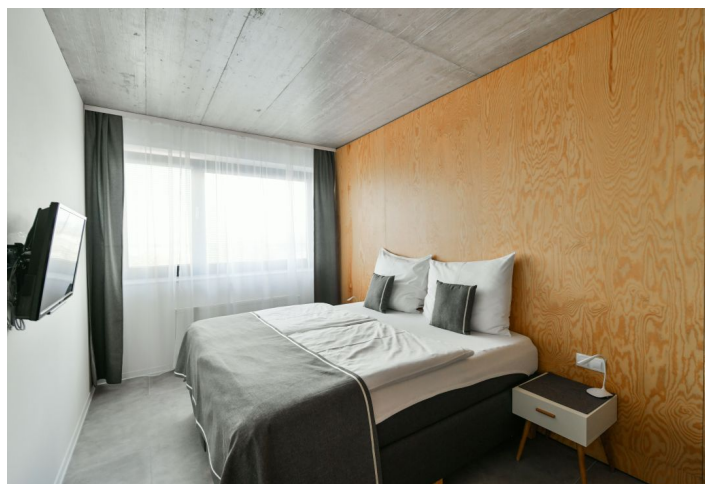




Apartment One-bedroom (2+kk)

€ 1 093 | CZK 27 000

45 m², Prague 10, Michle, Bohdalecká





Apartment One-bedroom (2+kk)

€ 1 093 | CZK 27 000

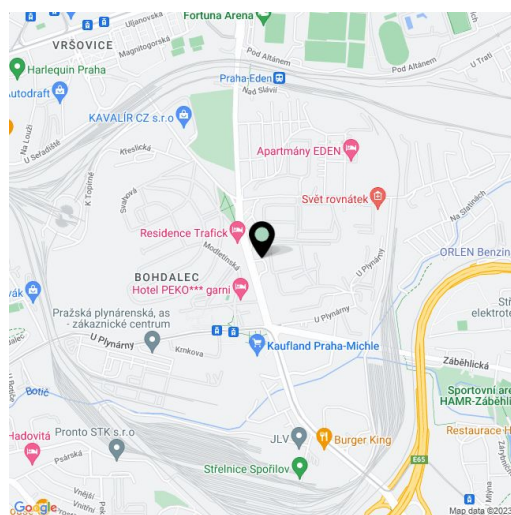
45 m², Prague 10, Michle, Bohdalecká

Total area	45 m²
Parking	Garage space available.
Garage	Yes
Cellar	-
PENB	A
Reference number	37297
Available from	Immediately

This fully furnished 1-bedroom apartment is set on the third floor of a modern residence with reception and restaurant on the border of Michle and Vršovice, close to the forested Bohdalec Hill, offers many opportunities for sports activities. It is also close to a highway exit, making it quick and easy to leave the city. Within walking distance of a supermarket, cafe, and Hamr sports center; the Eden shopping and entertainment center and other amenities are five min. by public transportation.

The interior features open plan living room with fully fitted kitchen and dining area, bedroom, bathroom with walk-in shower, 2 wash-basins, toilet, urinal, and entrance hall with storage space.

Air conditioning, large format tiles, complete equipment including dishes, kitchen appliances and bedding, Internet, Smart TV, washer, dryer, dishwasher, safe-deposit box, reception, laundry, restaurant on the ground floor. Common charges and deposit for energies is billed separately. Garage space available at CZK 1800 per month.



* Area of the unit according to the Civil Code. The area consists of the sum total area of the entire unit bounded by perimeter walls.