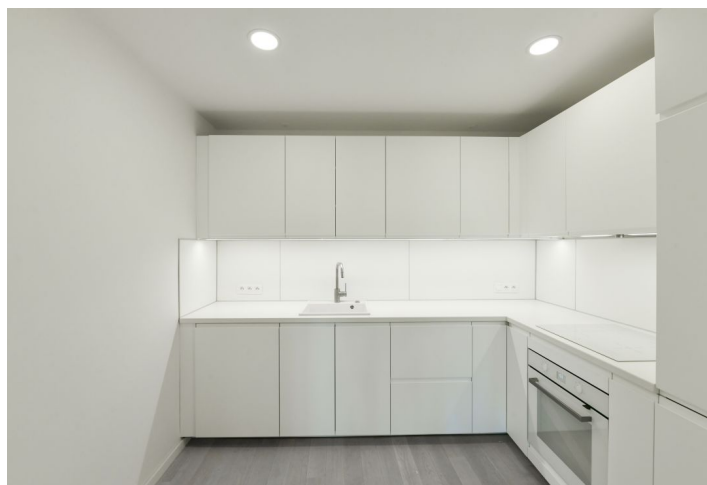
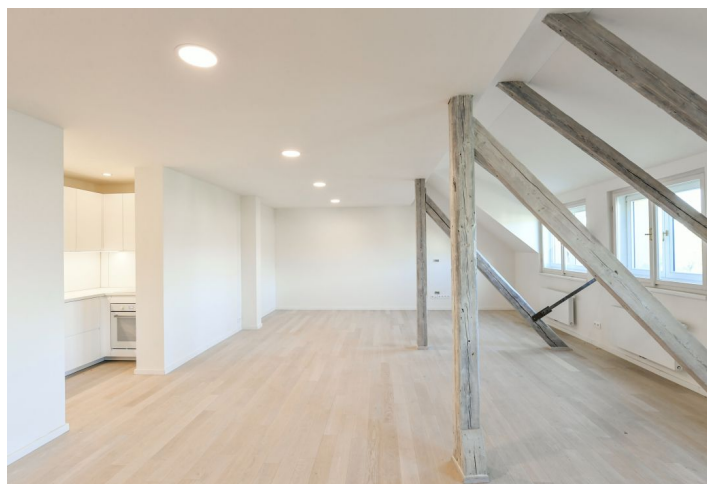




Apartment Two-bedroom (3+kk)

Rented

112 m², Prague 1, Nové Město, Masarykovo nábřeží





Apartment Two-bedroom (3+kk)

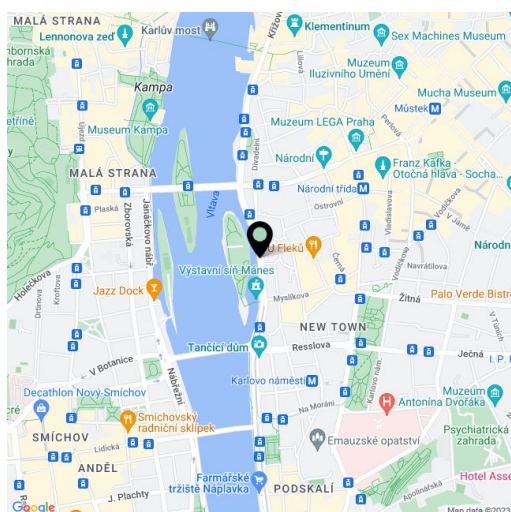
Rented112 m², Prague 1, Nové Město, Masarykovo nábřeží

| | |
|------------------|--------------------|
| Total area | 112 m ² |
| Parking | - |
| Cellar | Yes |
| PENB | G |
| Reference number | 37406 |
| Available from | Immediately |

Boasting a beautiful riverfront location and views of the Vltava river, the Prague Castle, Petřín Hill and the Žofín Palace, this contemporary 2-bedroom 2-bathroom attic apartment is situated on the 5th floor of a well kept fully renovated traditional building with a lift. Set in an attractive central location in close vicinity of the National Theater, only a short walk from the Old Town and Wenceslas Square. Location with very good transportation connections (trams are a few steps away, metro within walking distance) and full amenities and services in the area.

The interior features a comfortable living room with a fully fitted open kitchen, a master bedroom with an en-suite bathroom (bathtub, toilet, bidet shower), a second bedroom, a family bathroom (walk-in shower, toilet, bidet shower), a utility / storage room, and an open entrance hall.

Hardwood floors, tiles, gas boiler, dishwasher, video entry phone, **cellar**. Monthly deposit for service charges and water: CZK 900/person. Gas and electricity bills will be transferred to the tenant.



* Area of the unit according to the Civil Code. The area consists of the sum total area of the entire unit bounded by perimeter walls.