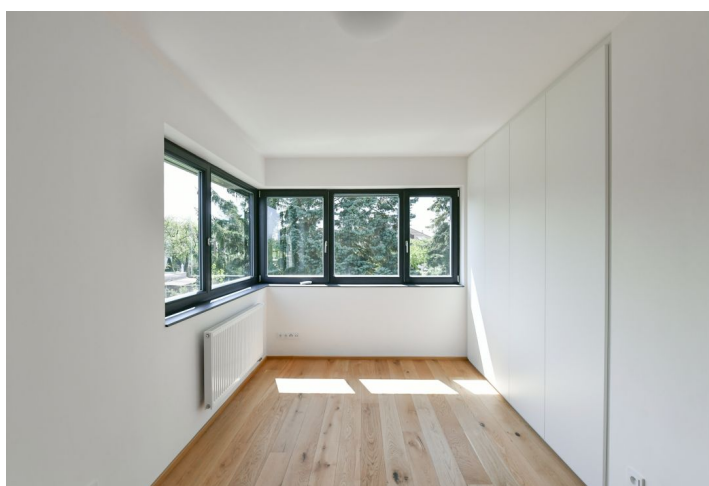




House Three-bedroom (4+kk)

Rented

145 m², Praha 4, Kunratice





House Three-bedroom (4+kk)

Rented

145 m², Praha 4, Kunratice

Plot	301 m ²
Foot print	92 m ²
Garden	209 m ²
Parking	Garage and 2 parking spaces on the plot.
Garage	Yes
Cellar	-
Service price	Deposit for services and utilities CZK 17,000/month.
PENB	B
Reference number	37471
Available from	Immediately

Benefiting from close proximity to popular Kunratický Forest, this townhouse with 2 bathrooms, a back garden, and parking is situated in a quiet residential neighborhood with plenty of greenery, near a local school, a kindergarden, and several sports facilities incl. a popular bike path leading to the Vltava River in Podolí, in close proximity to the Castle Park and Kunratice shopping center. A location with quality amenities and good access to the city center, the Chodov metro station and shopping mall, and convenient to the D1 highway and Prague 4 international schools (PBS, Czech-British Elementary School).

The ground floor features a living room with a fully fitted open plan kitchen and access to the **terrace** and **garden**, a storage room, a toilet, a utility room, garage access, and an entrance hall. The upper floor includes a master bedroom with a large **walk-in closet** and an en-suite bathroom (walk-in shower, toilet, bidet shower), two further bedrooms, and a family bathroom (bathtub with a shower screen, bidet, toilet).

Air-conditioning in the bedrooms, **hardwood floors**, carpets in the children's rooms, large-format tiles, wooden stairs, built-in wardrobes, electric boiler, washer, dryer, dishwasher, TV, terrace awning. A **garage** and **two parking spots** on the plot are available.



House Three-bedroom (4+kk)

145 m², Praha 4, Kunratice

Rented



DŮM C
Užitná plocha 145,2 m²
Podlahová plocha 147,0 m²
Dle vyhl. č. 136/2013 Sb.
Zastavěná plocha 92,1 m²
Plocha pozemku 301,2 m²

Legenda místnosti 1.MP

č.	název místnosti	plocha m ²	podlahová krytina
3.1.01	obývací	7,57	keramická dlažba
3.1.02	jídelna	17,14	sklepa
3.1.03	kuch.	2,52	keramická dlažba
3.1.04	ložnice	9,05	dřevěná opuzvená
3.1.05	WC	2,00	keramická dlažba
3.1.06	koupele	2,34	keramická dlažba
3.1.07	terasa	33,17	dřevěná opuzvená
		73,79 m²	

Legenda místnosti 2.MP

č.	název místnosti	plocha m ²	podlahová krytina
3.2.01	obývací	13,41	dřevěná opuzvená
3.2.02	jídelna	6,12	dřevěná opuzvená
3.2.03	kuchol	5,28	keramická dlažba
3.2.04	ložnice	11,19	dřevěná opuzvená
3.2.05	koupele	7,15	keramická dlažba
3.2.06	podlaž.	13,65	dřevěná opuzvená
3.2.07	terasa	14,61	dřevěná opuzvená
		74,41 m²	

rodinný dům Terzetto Kunratice_DŮM C_Pudový