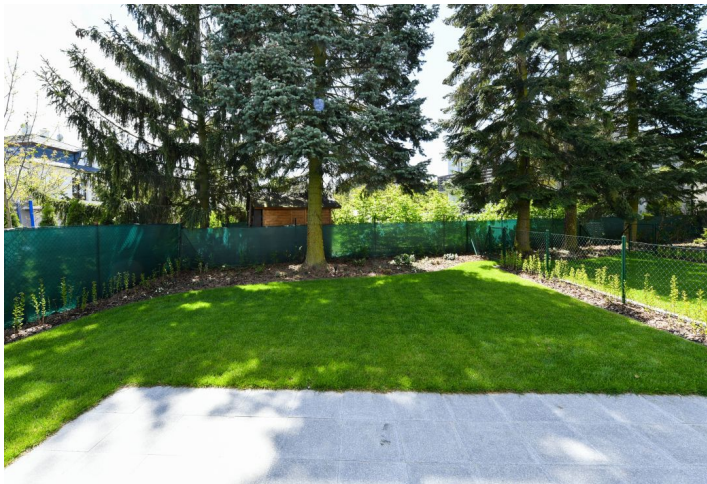




## House Two-bedroom (3+kk)

Rented

118 m<sup>2</sup>, Prague 4, Kunratice





## House Two-bedroom (3+kk)

Rented

118 m<sup>2</sup>, Prague 4, Kunratice

Plot	231 m <sup>2</sup>
Foot print	68 m <sup>2</sup>
Garden	163 m <sup>2</sup>
Parking	Two parking spaces on the plot.
Garage	Yes
Cellar	-
PENB	B
Reference number	37473
Available from	Immediately

Benefiting from close proximity to the popular Kunratický Forest, this new-build 2-bedroom townhouse with a roof terrace, a back garden, and parking is situated in a quiet residential neighborhood with plenty of greenery, near a local school, a kindergarten, and several sports facilities incl. a popular bike path leading to the Vltava River in Podolí, in close proximity to the Castle Park and Kunratice shopping center. A location with quality amenities and good access to the city center, the Chodov metro station and shopping mall, and convenient to the D1 highway and Prague 4 international schools (PBS, Czech-British Elementary School).

The ground floor features a living room with a fully fitted open plan kitchen and access to the **terrace** and **garden**, a storage closet, a toilet, a utility room, and an entrance hall. The upper floor includes two bedrooms, a bathroom (bathtub with a shower screen, toilet), an additional toilet, and a storage room. The top floor offers a spacious **roof terrace**.

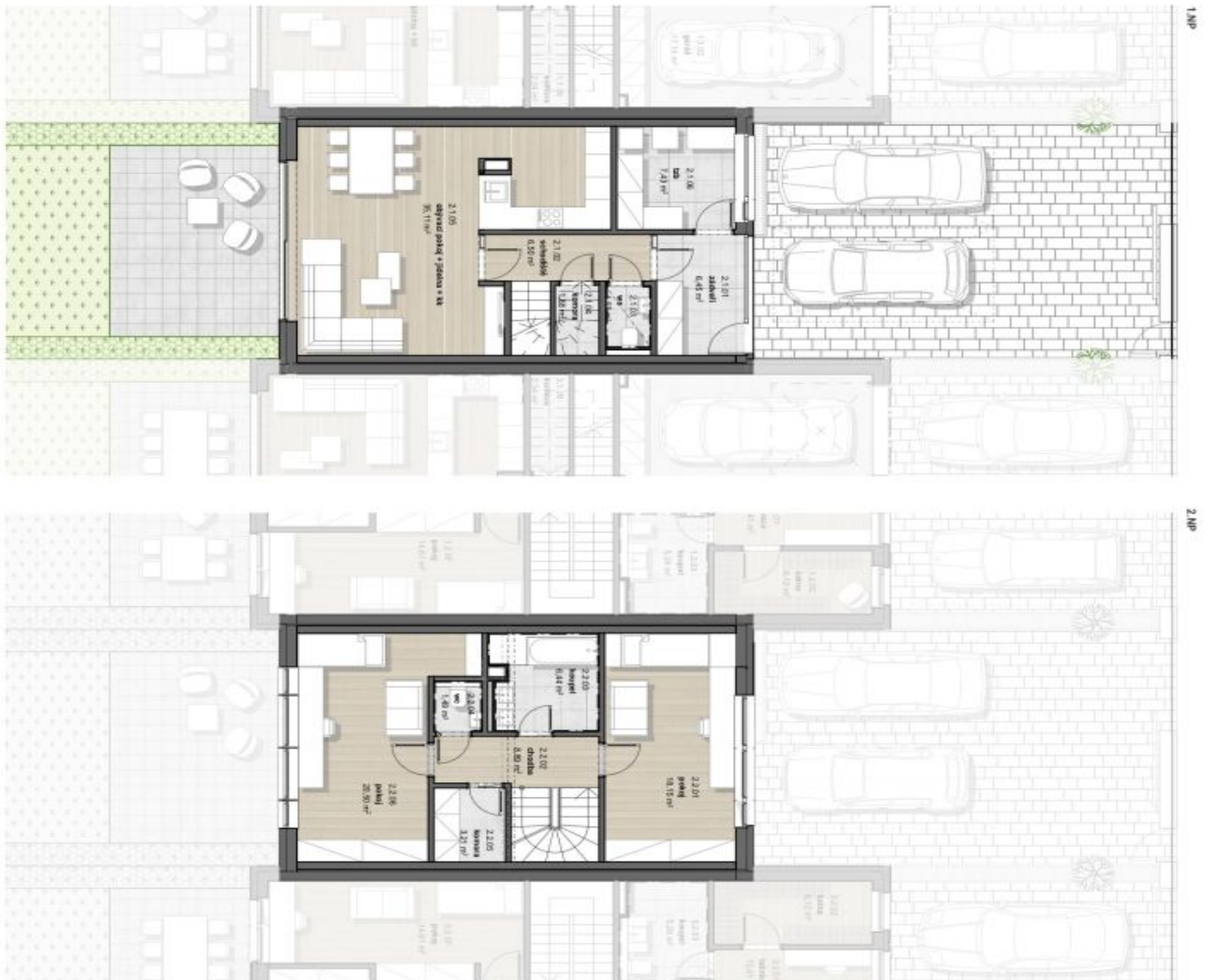
**Air-conditioning** in the bedrooms, **hardwood floors**, large-format tiles, wooden stairs, built-in wardrobes, electric boiler, washer, dryer, dishwasher, TV, terrace awning. **Two parking spots** on the plot are available. Monthly deposit for services and utilities in the amount of CZK 10,000 is billed separately. The photos are taken from a similar house. Available from October 2022.



# House Two-bedroom (3+kk)

118 m<sup>2</sup>, Prague 4, Kunratice

Rented



## DŮM B

Užitná plocha

Podlahová plocha

Okrajová plocha c. 100000 m<sup>2</sup>

Zastavěná plocha

Plocha pozemku

117,7 m<sup>2</sup>

118,4 m<sup>2</sup>

118,4 m<sup>2</sup>

67,7 m<sup>2</sup>

230,6 m<sup>2</sup>

### Legenda místností 1.NP

č.	název místnosti	plocha m <sup>2</sup>	podlahovou krytinu
2.1.01	zobavit	6,45	keramická dlažba
2.1.02	schodiště	6,50	dřevěná ohrnutivá
2.1.03	wc	1,69	keramická dlažba
2.1.04	komora	1,88	keramická dlažba
2.1.05	obývací pokoj + jídelna + kú.	35,11	dřevěná ohrnutivá
2.1.06	ter.	7,43	keramická dlažba
		<b>59,06 m<sup>2</sup></b>	

### Legenda místností 2.NP

č.	název místnosti	plocha m <sup>2</sup>	podlahovou krytinu
2.2.01	pokoj	18,15	dřevěná ohrnutivá
2.2.02	chodba	8,89	dřevěná ohrnutivá
2.2.03	komora	6,44	dřevěná ohrnutivá
2.2.04	wc	1,49	keramická dlažba
2.2.05	komora	3,21	dřevěná ohrnutivá
2.2.06	pokoj	20,50	dřevěná ohrnutivá
		<b>58,68 m<sup>2</sup></b>	

rodinný dům Terzetto Kunratice\_DŮM B\_Přidružený