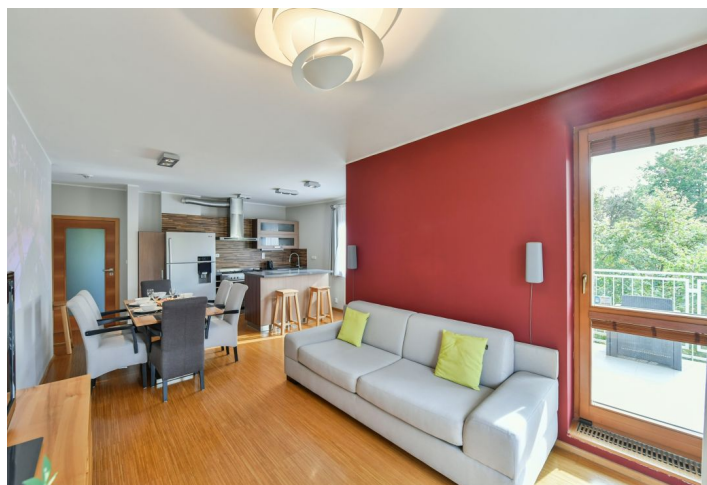




Apartment Two-bedroom (3+kk)

Rented

70 m², Prague 4, Krč, U Krčského nádraží





Apartment Two-bedroom (3+kk)

Rented

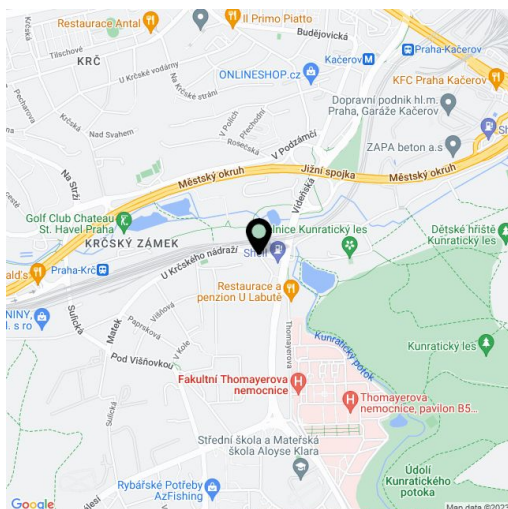
70 m², Prague 4, Krč, U Krčského nádraží

| | |
|------------------|-------------------|
| Total area | 86 m ² |
| Floor area* | 70 m ² |
| Terrace | 16 m ² |
| Parking | Garage parking. |
| Garage | Yes |
| Cellar | Yes |
| PENB | G |
| Reference number | 37563 |
| Available from | Immediately |

Benefiting from a 16 m² terrace and beautiful green views, this is a 2-bedroom apartment on the second floor in the Vila Vídeňská residential project with a lift, a private garden and parking. Located in a quiet green residential neighborhood in Krč, Prague 4, within walking distance of the Michelský Forest and the Labuť (Swan) Pond, near the Thomayer Hospital. Within easy reach of shopping and full amenities, the Kačerov metro station (line C), a bus stop and a train station.

The apartment offers a living room with a fully fitted open plan kitchen and **terrace** access, two separate bedrooms with built-in wardrobes, a bathroom including a whirlpool bath with a LED colour therapy feature, a separate toilet with a bidet shower, and an entrance hall.

Wooden floating floors, tiles, security entry door, blinds, fofabed, gas boiler, Villeroy&Boch bathroom fixtures, washing machine, dishwasher, basic kitchenware, TV, home cinema, projectot, iron and ironing board, vacuum cleaner, garden furniture, alarm that can be connected to a security agency, WiFi, **cellar**, pram storage, barrier free access. A large **garage parking** space is available at CZK 2000/month. Deposit for service charges and water approx: CZK 2200/month. Gas and electricity are billed separately.



* Area of the unit according to the Civil Code. The area consists of the sum total area of the entire unit bounded by perimeter walls.