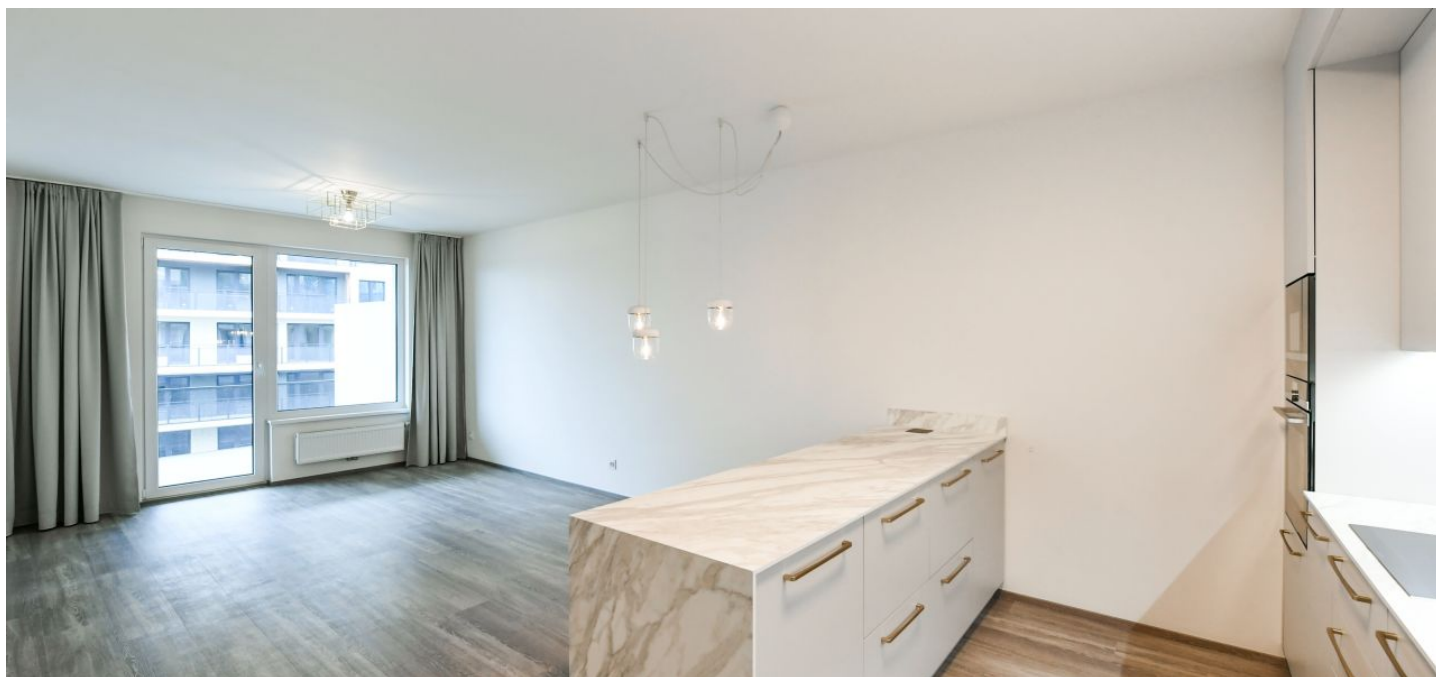




Apartment Two-bedroom (3+kk)

Rented

91 m², Prague 3, Strašnice, Zvěřinova





Apartment Two-bedroom (3+kk)

Rented

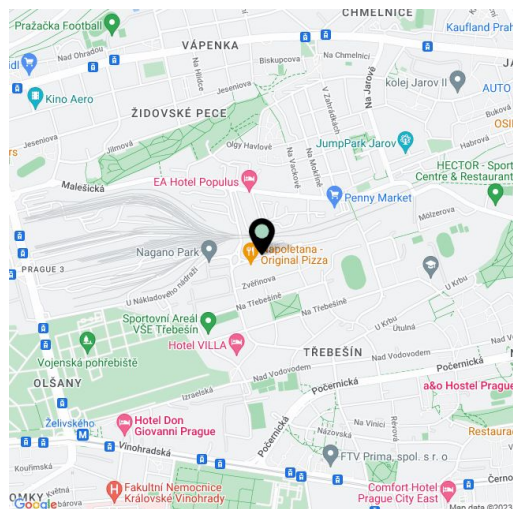
91 m², Prague 3, Strašnice, Zvěřinova

Total area	112 m ²
Floor area*	91 m ²
Terrace	21 m ²
Parking	Garage parking.
Garage	Yes
Cellar	Yes
PENB	B
Reference number	37660
Available from	Immediately

Benefiting from a 21 m² south-west facing terrace, this is a brand new 2-bedroom 2-bathroom apartment on the fifth floor of the recently built Tulipa Třebešín residential project, a few steps from Jiřího Karna Park and near the Malešický Park and Forest. Situated on the edge of a quiet and green residential area on the Strašnice and Vinohrady neighborhoods divide, in a location with full amenities within easy reach and bus connections to the city center, about a 10 minute walk to Želivského metro station.

The interior features a living room with a fully fitted open plan kitchen, 2 bedrooms, and 2 bathrooms (walk-in shower, toilet / bathtub, toilet). There is a laundry room, and an entrance hall with built-in wardrobes and storage. The **terrace** is accessible from all main rooms.

Vinyl floors, tiles, French windows, central heating, washer, dryer, dishwasher, induction cooktop, microwave oven, **cellar**. A **garage parking** space is included. Monthly deposit for service charges, water and heating CZK 5,000. Electricity is billed separately.



* Area of the unit according to the Civil Code. The area consists of the sum total area of the entire unit bounded by perimeter walls.