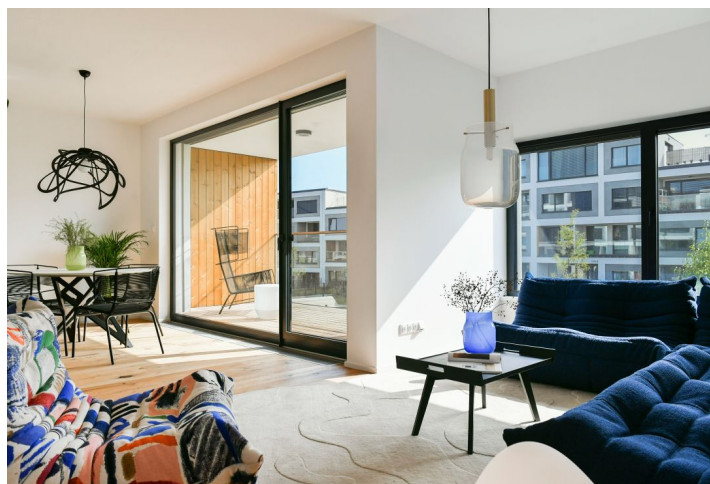




Apartment Two-bedroom (3+kk)

€ 564 500 | CZK 14 200 000

84.66 m², Prague 5, Barrandov, Kurandové





Apartment Two-bedroom (3+kk)

€ 564 500 | CZK 14 200 000

84.66 m², Prague 5, Barrandov, Kurandové

Total area	92 m²
Floor area*	85 m²
Loggia	8 m²
Parking	Garage parking space at extra cost
Garage	Yes
Cellar	-
PENB	B
Reference number	37801

This newly built, bright and airy apartment with a sunny loggia is part of the Barrandez-vous residential project with a timeless architectural style, quality home equipment, energy-efficient consumption, and, above all, a completely new park created by the renowned Flera garden studio.

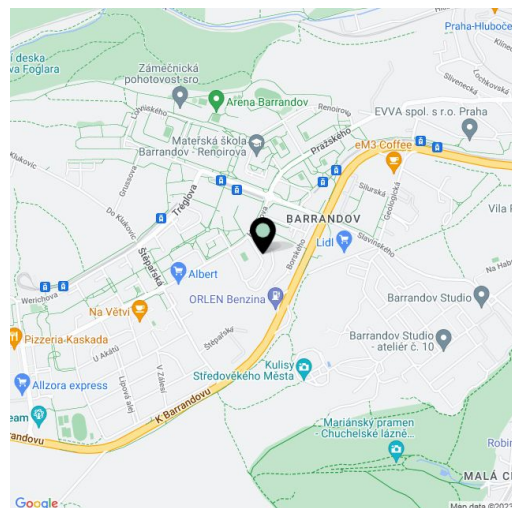
The area of the unit on the 1st floor consists of a living room with a preparation for a kitchen, 2 bedrooms, a bathroom, a separate toilet, and a foyer. The living room has access to a **southeast loggia overlooking the park**.

The interior is completed to a quality standard including **large-format windows, three-layer wooden floors**, wooden grate loggia surface, large-format tiles, designer sanitary ware from the leading manufacturers, a security entrance door, and interior doors. **A garage parking space and cellar at extra cost.**

The project is part of the Barrandov district with its **full range of services**. In the immediate vicinity, there is a kindergarten and elementary school, supermarkets, a post office, a drugstore, a restaurant, a clinic, a pharmacy, or ATMs. It is about a **5-minute walk to a tram stop**, and a bus stop is even closer. The ride to the Smíchovské nádraží metro station takes less than 10 minutes by tram. For trips by car, there is a good connection to the Prague Ring Road and the Southern Junction. The neighborhood is made more pleasant by the proximity of two large parks: the **Prokopské and Dalejské valleys** on the one hand and the **Radotín-Chuchelský grove** on the other.

Floor area 84.66 m², loggia 7.7 m².

For a complete list of units, contact our office.



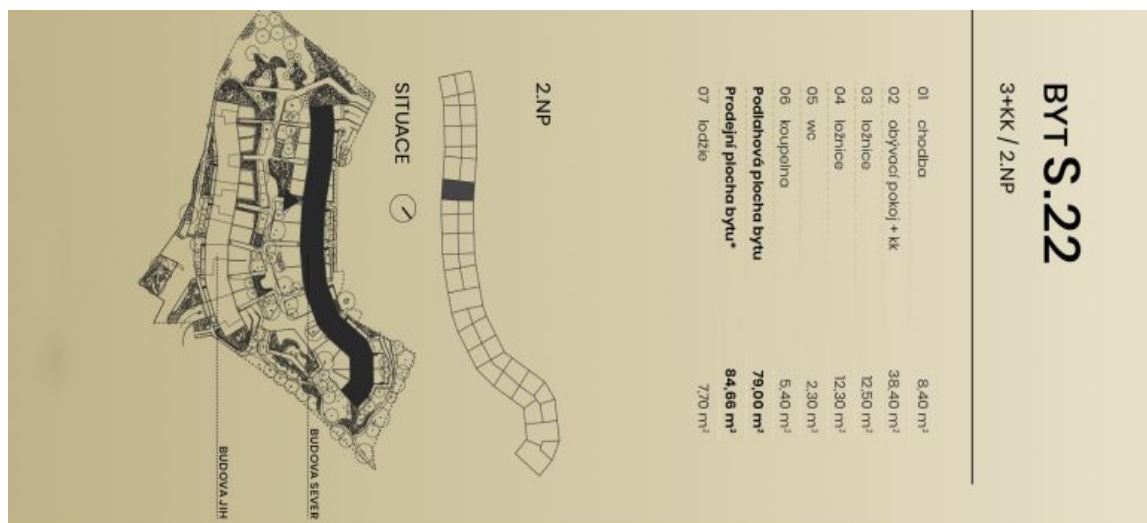
* Area of the unit according to the Civil Code. The area consists of the sum total area of the entire unit bounded by perimeter walls.



Apartment Two-bedroom (3+kk)

€ 564 500 | CZK 14 200 000

84.66 m², Prague 5, Barrandov, Kurandové



1 cm = 60 cm | tisk na A3

Upozornění: Schéma podlahy a dispozice bytu je zobrazeno výše uvedeným způsobem. Všechny údaje jsou orientační a nejsou závazné. Pro více informací o bytě a jeho vybavení se obraťte na makléře. Makléř je povinen poskytnout všechny potřebné informace o bytě a jeho vybavení. Pro více informací o bytě a jeho vybavení se obraťte na makléře. Makléř je povinen poskytnout všechny potřebné informace o bytě a jeho vybavení.