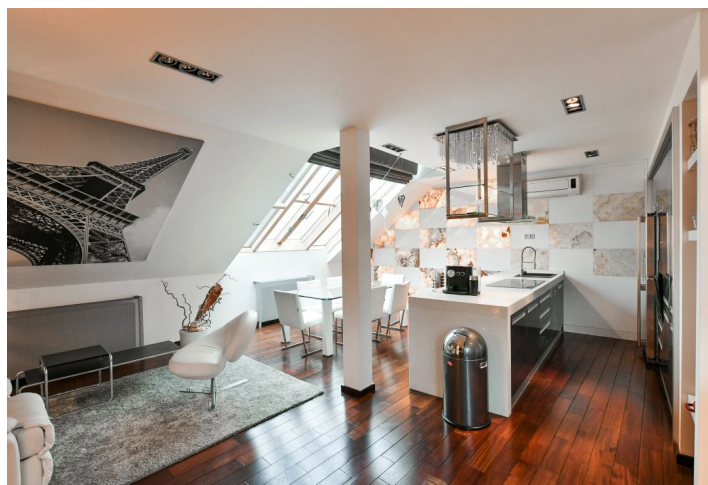
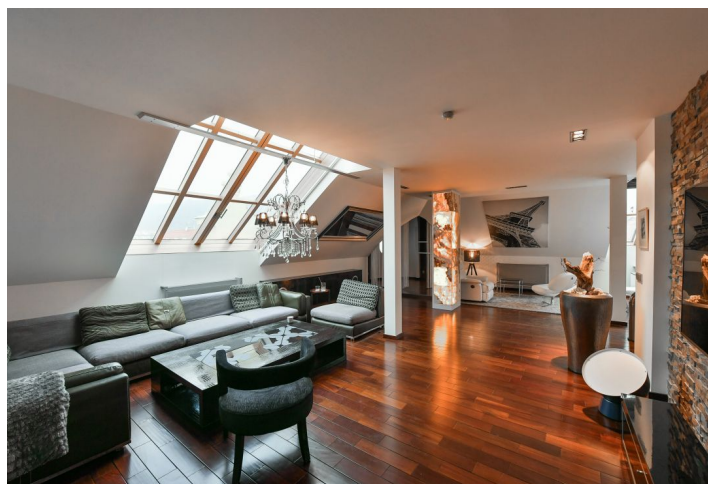




## Apartment Two-bedroom (3+kk)

€ 1 619 | CZK 40 000

160 m<sup>2</sup>, Prague 5, Smíchov, Zborovská





# Apartment Two-bedroom (3+kk)

€ 1 619 | CZK 40 000

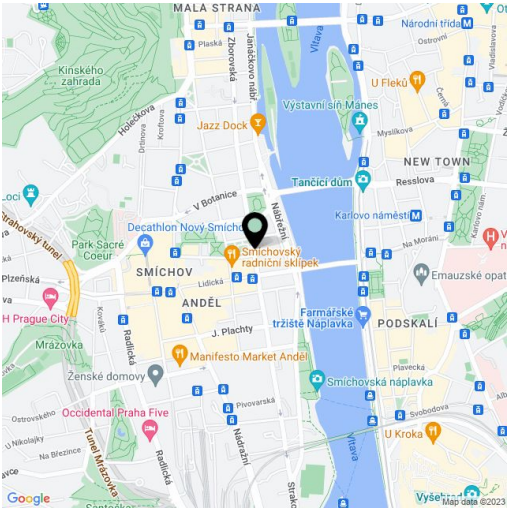
160 m², Prague 5, Smíchov, Zborovská

Total area	160 m²
Parking	-
Cellar	Yes
PENB	G
Reference number	37814
Available from	Immediately

Boasting views of the Prague Castle, this is a completely furnished 2-bedroom split-level attic apartment with high standard equipment including backlit onyx tiles. Situated on the 5th floor of a traditional residential building with a lift on the border of Malá Strana and Smíchov neighborhoods, moments from the Vltava riverbank. Location with quick access to the city center, just a few minute walk to the Petřínské sady and Kampa Parks, within walking distance of the Nový Smíchov entertainment and shopping center, the French School and Anděl metro.

The lower level of the apartment includes a spacious living room with a dining space, a fully fitted open plan kitchen and a recess suitable for a study, a fitted walk-in closet with utility area, a toilet, and an entrance hall. The upper floor features two bedrooms and a bathroom with a walk-in shower, a bidet, and a toilet.

High standard materials and finishes, **hardwood floors**, large format tiles, atelier windows, gas boiler, washing machine, Baumatic kitchen appliances, dishwasher, microwave oven, LG American type fridge, two TV sets, video entry phone, alarm, satellite reception, **cellar**. Monthly deposit for service charges and utilities in the amount of CZK 7,000 is billed separately.



\* Area of the unit according to the Civil Code. The area consists of the sum total area of the entire unit bounded by perimeter walls.