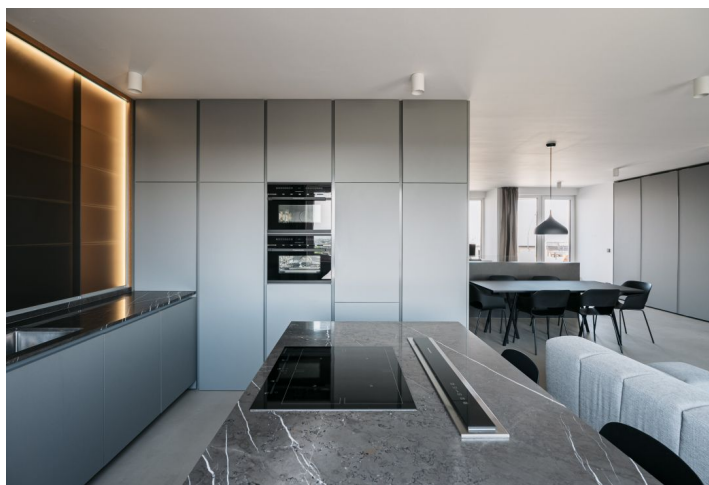
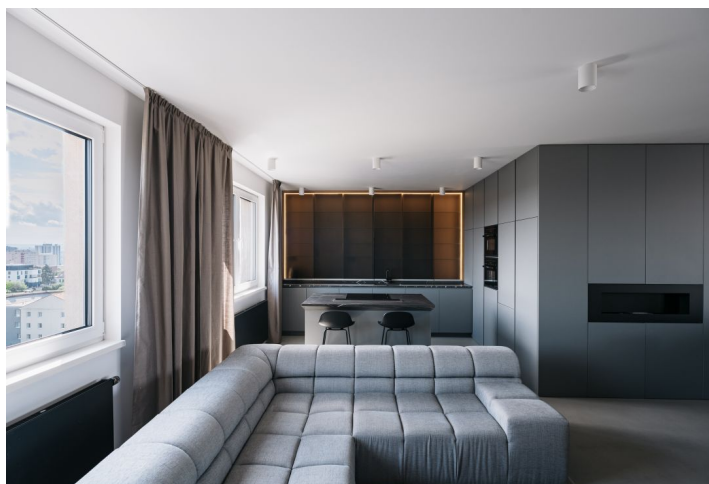




Apartment Two-bedroom (3+kk)

Rented

119.3 m², Praha 3, Strašnice, Zvěřinova





Apartment Two-bedroom (3+kk)

Rented

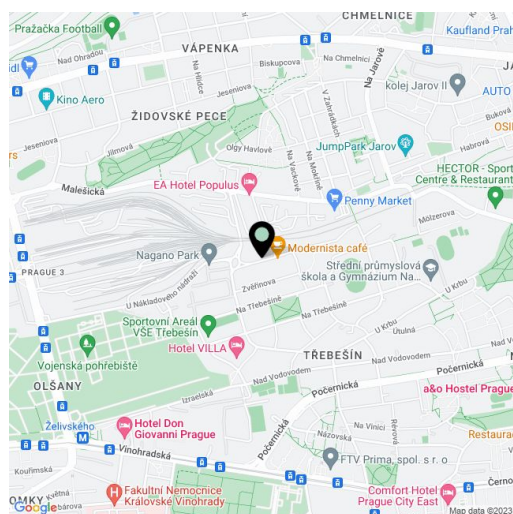
119.3 m², Praha 3, Strašnice, Zvěřinova

Total area	225 m ²
Floor area*	119 m ²
Terrace	106 m ²
Parking	Garage parking.
Garage	Yes
Cellar	-
Service price	Monthly deposit for services, water, heating, and garage maintenance: CZK 6,500. Electricity is billed separately.
PENB	G
Reference number	37863
Available from	Immediately

Designer apartment in Strašnice, Prague 3. Benefiting from a large terrace and panoramic views of the city including Petřín Hill and the Prague Castle, this brand new, fully furnished apartment is on the 9th floor of the recently built Tulipa Třebešín residential project. Situated on the edge of a quiet and green residential area on the border of Strašnice and Vinohrady. A location with full amenities within easy reach and bus connections to the city center, a few steps from Jiřího Karena Park, about a 10-minute walk to the Želivského metro station and Malešický Park.

The apartment, accessed from the 9th floor, consists of an entrance hall with built-in storage and a staircase leading up to the main floor. The interior features a spacious living room with a bioethanol **fireplace**, a dining area, and a fully fitted open plan kitchen, a master bedroom with a fitted **walk-in closet**, a bathroom with both a bathtub and a shower, and a separate toilet. The **terrace** is accessible from the living room and master bedroom.

High-standard equipment and finishes, **hardwood oak** and **screed floors**, security entry door, built-in wardrobes and storage, central heating, a washer/dryer, natural stone kitchen countertop, **Küppersbusch** kitchen appliances, induction cooktop, dishwasher, combination steam oven, microwave oven, TV, **terrace with a garden and a shower**, chip entry to the building. **A garage parking space** is included.



* Area of the unit according to the Civil Code. The area consists of the sum total area of the entire unit bounded by perimeter walls.