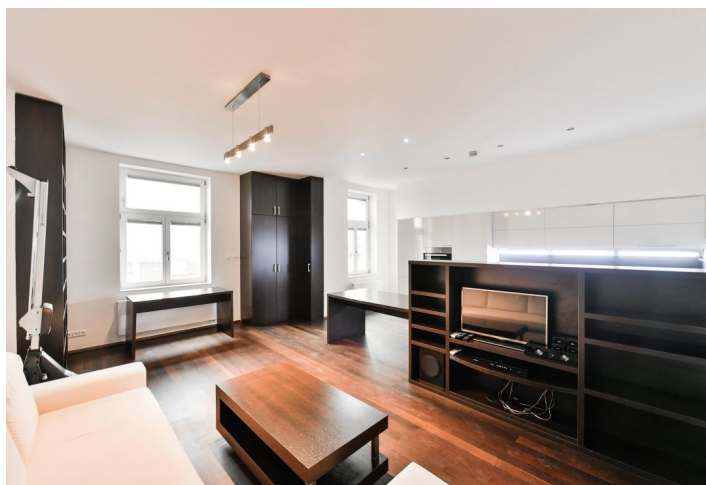
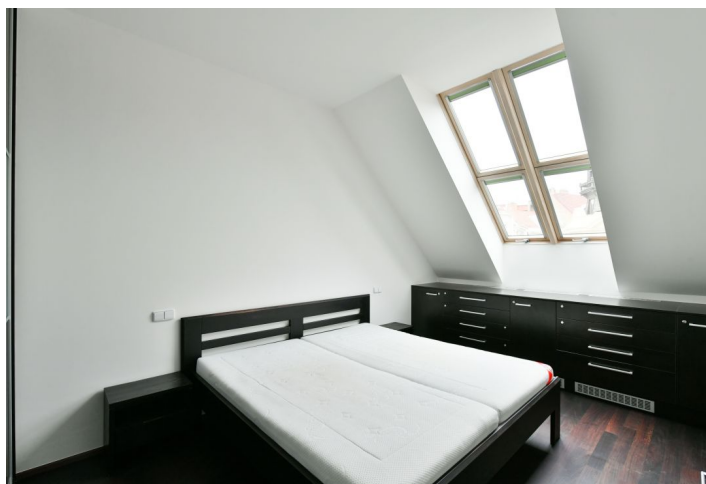




## Apartment One-bedroom (2+kk)

Rented

65 m<sup>2</sup>, Prague 10, Vršovice, Kodaňská





## Apartment One-bedroom (2+kk)

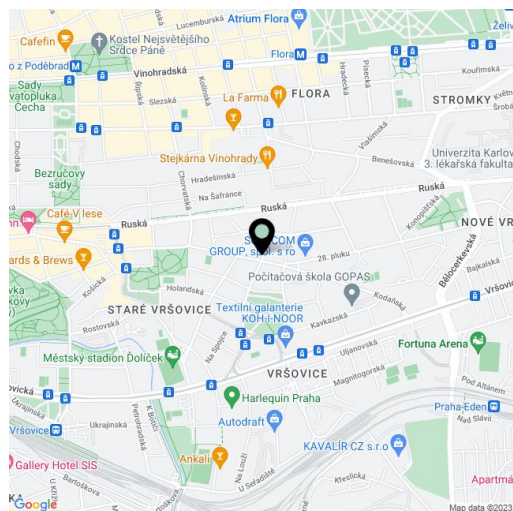
**Rented**65 m<sup>2</sup>, Prague 10, Vršovice, Kodaňská

Total area	65 m <sup>2</sup>
Parking	-
Cellar	-
PENB	C
Reference number	37957
Available from	Immediately

This is a fully furnished high standard 1-bedroom apartment on the 5th floor of a completely refurbished historic building with a lift, in close vicinity of the Svatopluka Čecha Square and the Heroldovy Sady Park, within walking distance of the Havlíčkovy sady Park. Located within easy reach of the city center and full amenities, near a bus and tram stop, a few stops to Náměstí Míru metro station.

The interior features an **air-conditioned** living room with a dining area and a fully integrated kitchen, a bedroom with atelier windows and built-in wardrobes, a bathroom including a bathtub, a walk-in shower and a toilet, and an entrance hall with built-in storage.

Quality equipment and finishes, **Wenge hardwood floors, marble tiling**, security entry door, built-in wardrobes and storage, central heating, **Miele** appliances, washer, dryer, dishwasher, induction cooktop, TV, **Kettler** rowing machine, heated floors in the hallway and bathroom, satellite connection, bike storage, shared balcony on the mezzanine floor. Deposit for common building charges and energies CZK 5200/month.



\* Area of the unit according to the Civil Code. The area consists of the sum total area of the entire unit bounded by perimeter walls.