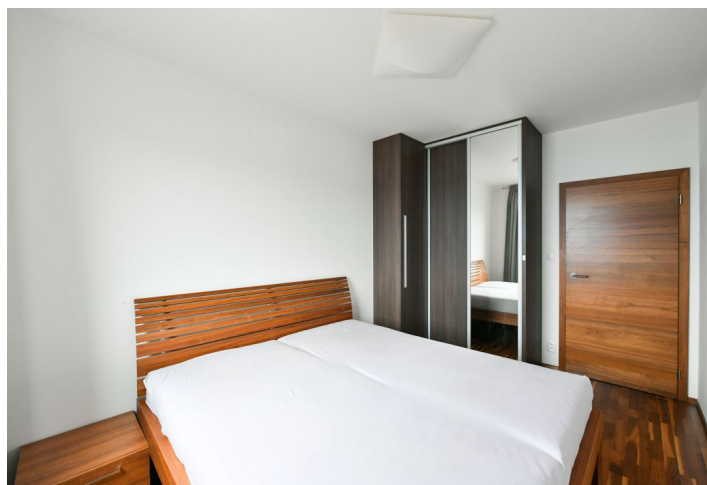




## Apartment Two-bedroom (3+kk)

Rented

83 m<sup>2</sup>, Prague 5, Zličín, Lanžhotská





## Apartment Two-bedroom (3+kk)

Rented

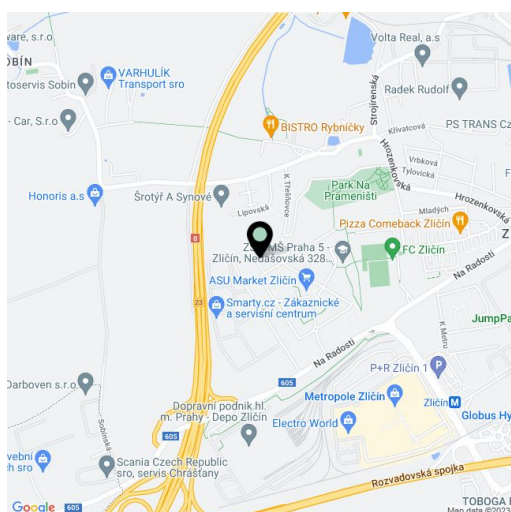
83 m<sup>2</sup>, Prague 5, Zličín, Lanžhotská

Total area	91 m <sup>2</sup>
Floor area*	83 m <sup>2</sup>
Terrace	8 m <sup>2</sup>
Parking	Garage parking.
Garage	Yes
Cellar	Yes
Service price	Monthly deposit for services, water, and heating: CZK 4,700. Electricity - transferred to the tenant.
PENB	C
Reference number	37958
Available from	17.01.2025

Benefiting from an 8 m<sup>2</sup> terrace and parking, this contemporary furnished apartment is on the 3<sup>rd</sup> floor of a modern apartment building with an elevator and a gated landscaped courtyard garden. Situated near Na Prameništi Park, just a short walk from the Metropole Zličín shopping center and Zličín metro station (line B), with quick access to the city center. Located moments from the Prague Ring Road, and a short drive from the airport (8 min.) and the Japanese School.

The interior features a living room with a dining area, fully fitted open plan kitchen, and **terrace** facing the courtyard garden, 2 bedrooms with built-in wardrobes, a bathroom with a walk-in shower, a separate toilet, a **walk-in closet**/storage room, and an entrance hall.

**Hardwood floors**, tiles, security entry door, French windows, blinds, central heating, washer, dishwasher, induction cooktop, microwave oven, kitchenware, **cellar**, pram storage in the building. A **garage parking** space is included.



\* Size of the unit according to the Housing Act.

The area consists of the sum total of the internal area of every room.