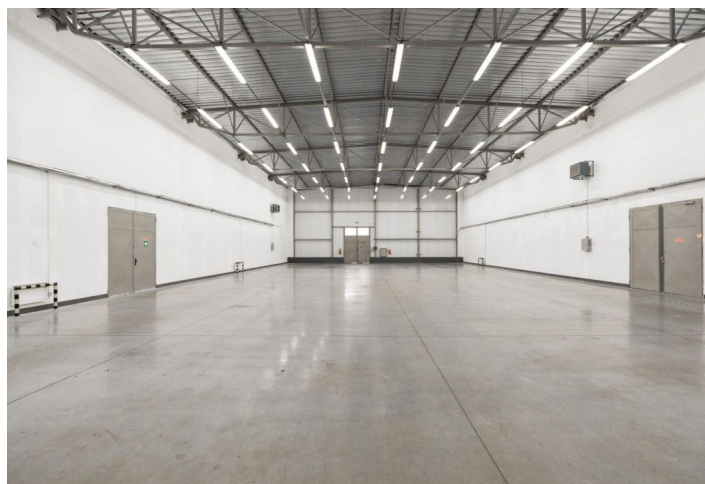
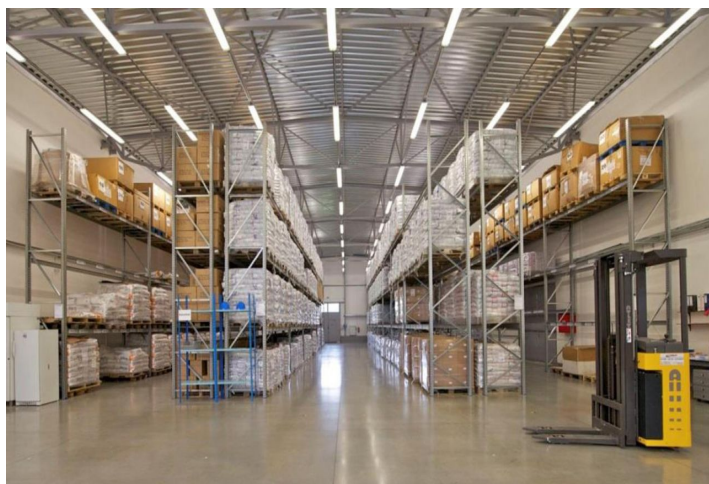




Warehouse space

1 226 m², Prague 9, Horní Počernice, Ve Žlibku

Ask for price





Warehouse space

1 226 m², Prague 9, Horní Počernice, Ve Žlibku

Ask for price

Total area	1 226 m ²
Ceiling height	—
Floor loading capacity	—
Column grid structure	—
Structure	—
PENB	B
Reference number	38016

975 sq.m. of warehouse and **251 sq.m.** of office space for rent in a commercial complex in Horní Počernice. The premises are suitable for storage or light production with administrative facilities. Low operating costs.

Equipment and services:

- Flexible units (warehouse / office / light production / showroom)
- 24 hour security guard
- Access to the complex 24 hours a day
- Electronic patrol system with GPS
- Camera system with recording
- Administration office on the premises
- Grocery store and canteen on site
- Parking in the complex
- Public transport stop in front of the complex

Production / storage facilities:

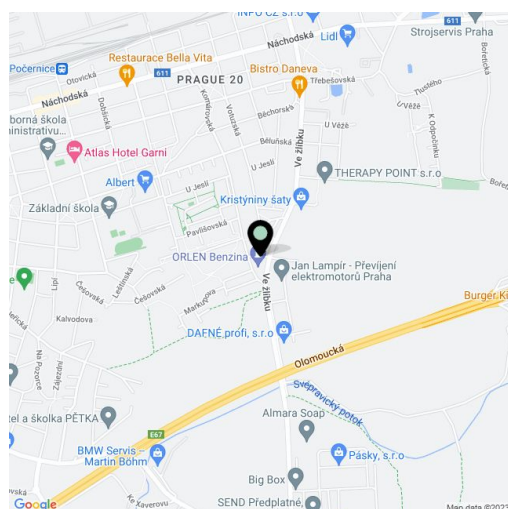
- Loading ramp with hydraulic platform
- 2x ramps for deliveries
- Floor load capacity 5 t / m²
- Clear height 6.5 m
- Installed lighting
- Hot air heating
- Open undivided space
- Access to the warehouse from both sides (possibility of Cross docking)
- Social facilities (showers, toilets, changing rooms for employees)
- Energy performance of the building - Class B - very economical

Offices:

- On two floors (ground floor 49 m² and 1st floor 220 m²)
- Kitchenette

Available from March 2021.

Lessee pays no commission.

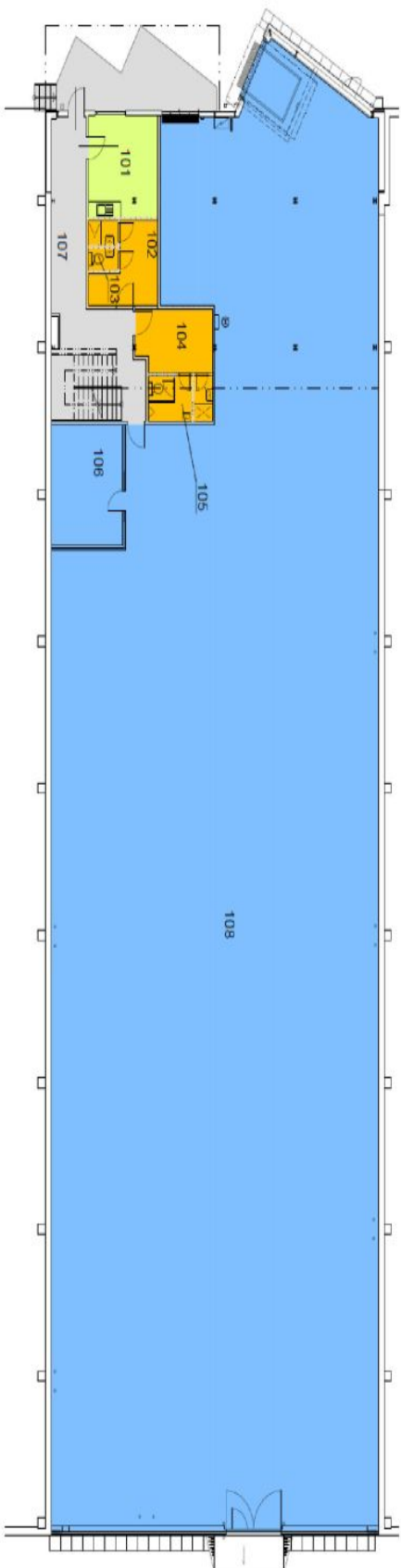




1. patro – kanceláře



Přízemí – sklad + zázemí

**Technická specifikace**

výška stropu skladu 6,5m
 otevřený nedělený prostor
 kanceláře v 1. patře a přízemí
 5x toaleta, 2x kuchyňka, 3x sprcha
 2x šatna pro zaměstnance
 přístup do skladu z obou stran budovy
 nákladní rampa s hydraulickou plošinou
 2x rampa pro dodávky
 horkovzdušné vytápění
 instalované osvětlení
 telefon, internet