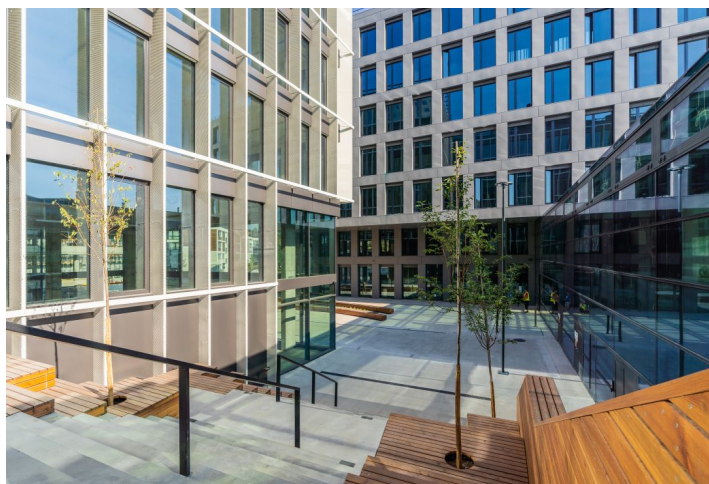
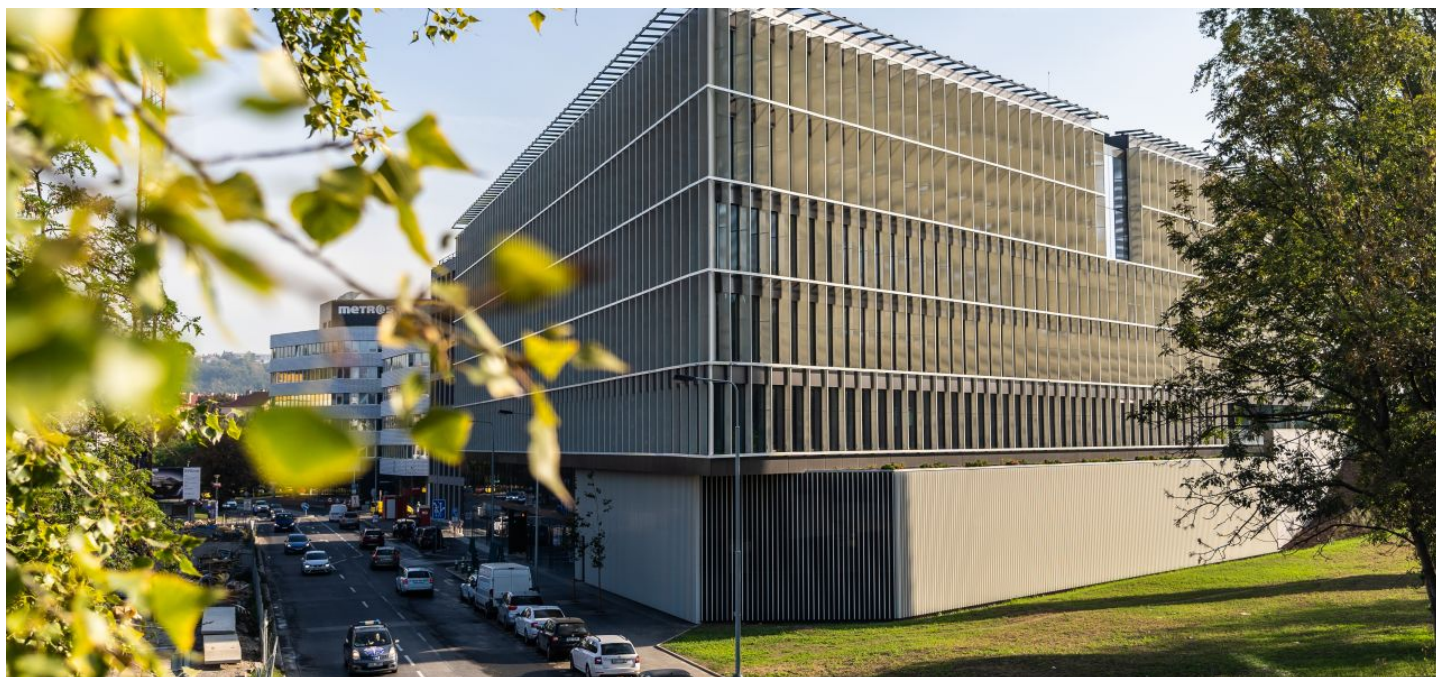




## Retail space

Prague 8, Libeň, Voctářova

Rented



**Retail space**

Prague 8, Libeň, Voctářova

**Rented**

<b>Service price</b>	170 CZK monthly per m <sup>2</sup>
<b>Available area</b>	476 m <sup>2</sup>
<b>Parking</b>	EUR 140 / ps / month
<b>PENB</b>	B
<b>Reference number</b>	38073

Retail space for lease in new administrative project consists of three buildings. It is an unusual combination of two administrative buildings and cultural heritage. Building 4 has a high variability of office space in 7 floors, commercial and warehouse space. There is a spectacular atrium and a rooftop garden terrace.

**Location:**

The building is located in a rapidly developing area of Prague 8 with excellent amenities and transport accessibility by car and public transport. In close vicinity of the Palmovka metro station (line B), tram stops and bus station.

Rental and service charges are listed without VAT. Lessee pays no commission.

