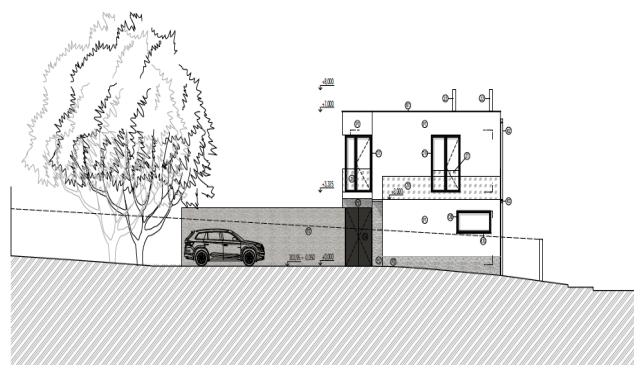
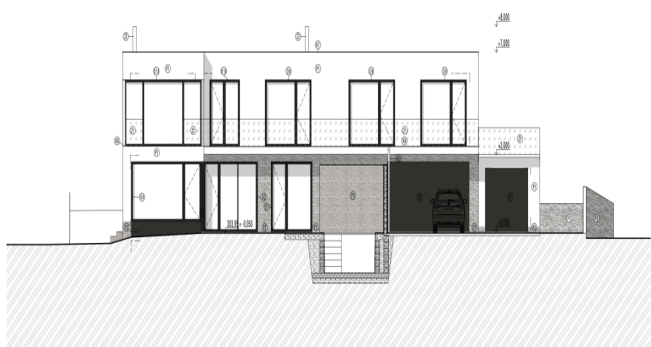




Land

944 m<sup>2</sup>, Praha-západ, Průhonice, Tovární

Sold



944 m<sup>2</sup>, Praha-západ, Průhonice, Tovární

Price per sq. m.	14 820 CZK
Total area	944 m <sup>2</sup>
Land type	Housing
Reference number	38089

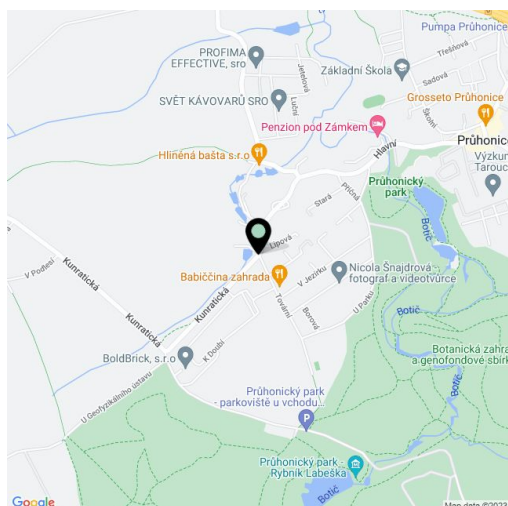
**Sunny corner plot with a valid building permit for a three-storey family house and all networks is located in a very quiet part of the village Průhonice near the castle park, within easy driving distance of Prague. It is possible to start construction immediately.**

The land has a **complete connection ready**: water, sewer, electricity, gas and the Internet. The building permit **allows the creation of a three-storey house** with a countertop roof, one underground floor and two above-ground, with a **garage** (25 m<sup>2</sup>) and an **outdoor pool**. The planned area of the house is 382 m<sup>2</sup>. The planned area of balcony, terrace and swimming pool is 103 m<sup>2</sup>.

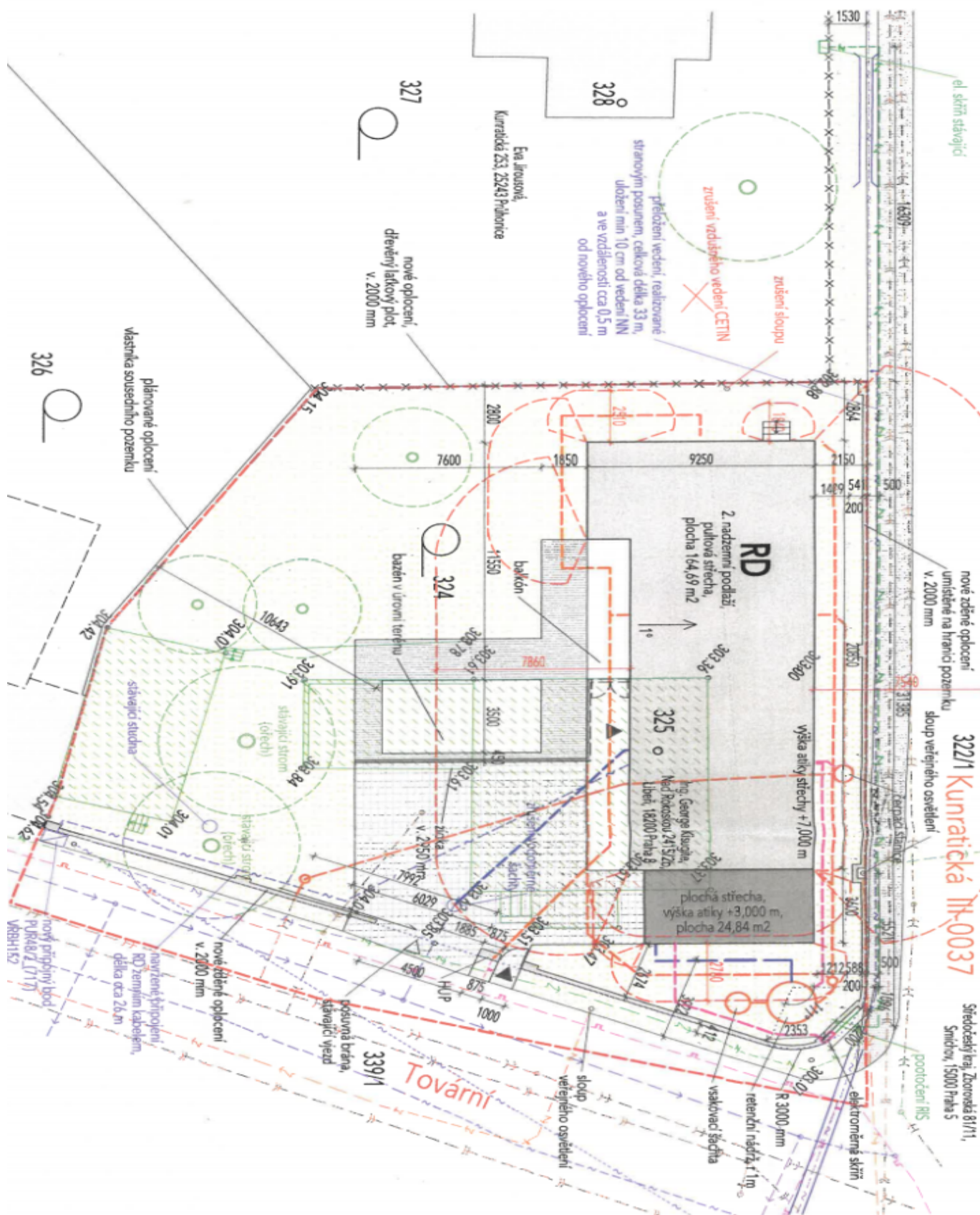
The **flat area** is ready for construction. There is a **well and mature trees**, including two walnuts (not limiting the future building). The entrance is directly from the street, the surroundings are residential buildings with gardens.

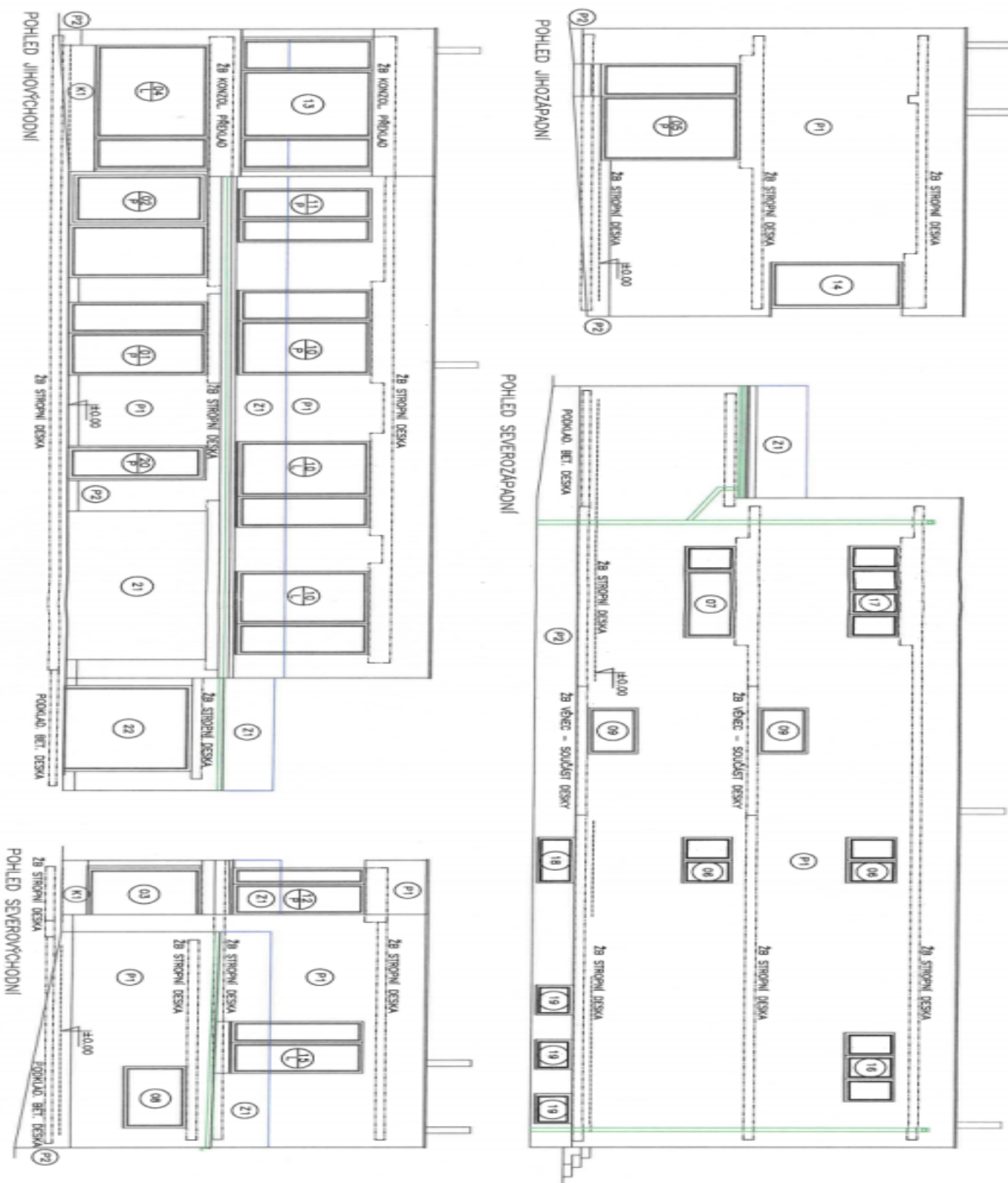
The location located on the southwestern edge of Průhonice offers **peace, closeness to nature and a quick range of services**. The central square with a grocery store, post office, pharmacy and other services is about 1 km away as well as a kindergarten and elementary school, **less than 15 minutes drive to the international schools** Sunny Canadian School and Prague British School. The shopping and entertainment zone in Čestlice or the **Dendrological Garden** are a few minutes away by car, as is the fast exit to the D1 motorway. The entrance to the famous Průhonice Park is within walking distance. A suburban bus stops close to the house and takes you to Opatov Metro Station in 10 minutes.

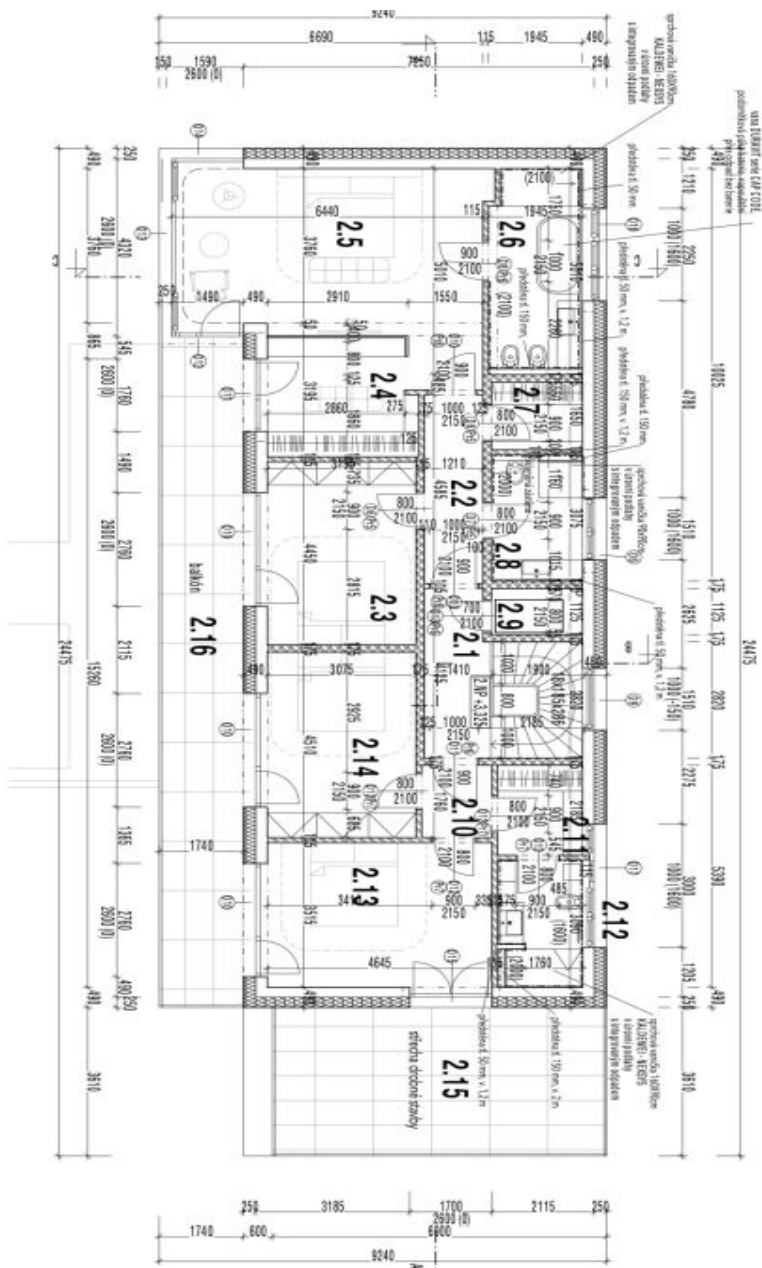
Total area 944 m<sup>2</sup>.











**LEGENDA MATERIÁLŮ**

- nosná VPC zděná tl. 20 cm, 140-F-10
- + zdivo na špičce
- přídavné VPC zdivo tl. 11,5 cm, 40-F-1DE
- + zdivo na špičce
- vlnitý závit HELUZ AKU 20
- + mláta pro tenkou spánu
- železobetonové konstrukce
- beton prostý
- tepelná izolace - XPS
- tepelná izolace - EPS
- substrát pro zvlhcnou stěchu
- rozšíř. terča
- štuk tloučka 16/32
- zbytek zeminou, hruštinou

**POZNÁMKY:**  
 Dokumentační soubor pro účely veřejné sávkové produkce, nepřesná se o měřičské dokumentaci.  
 4100 - 114400 m. n. m. Brn. SÚRSK



**LEGENDA MÍSTNOSTI**

ozn. místnosti	plocha	podlahla	oběvy	strop
2.1 chodba	11,31 m <sup>2</sup>	vinyl	vápenatá omítka	SDK
2.2 chodba	5,85 m <sup>2</sup>	vinyl	vápenatá omítka/ keramický obklad	SDK
2.3 pokoj	13,8 m <sup>2</sup>	vinyl	vápenatá omítka	SDK
2.4 šatna	8,54 m <sup>2</sup>	vinyl	vápenatá omítka	SDK
2.5 ložnice	28,86 m <sup>2</sup>	vinyl	vápenatá omítka	SDK
2.6 koupelna	10 m <sup>2</sup>	keramická dlažba	keramický obklad	SDK
2.7 šatna	3,1 m <sup>2</sup>	vinyl	vápenatá omítka	SDK
2.8 koupelna	5,8 m <sup>2</sup>	keramická dlažba	keramický obklad	SDK
2.9 vřítan	2,39 m <sup>2</sup>			

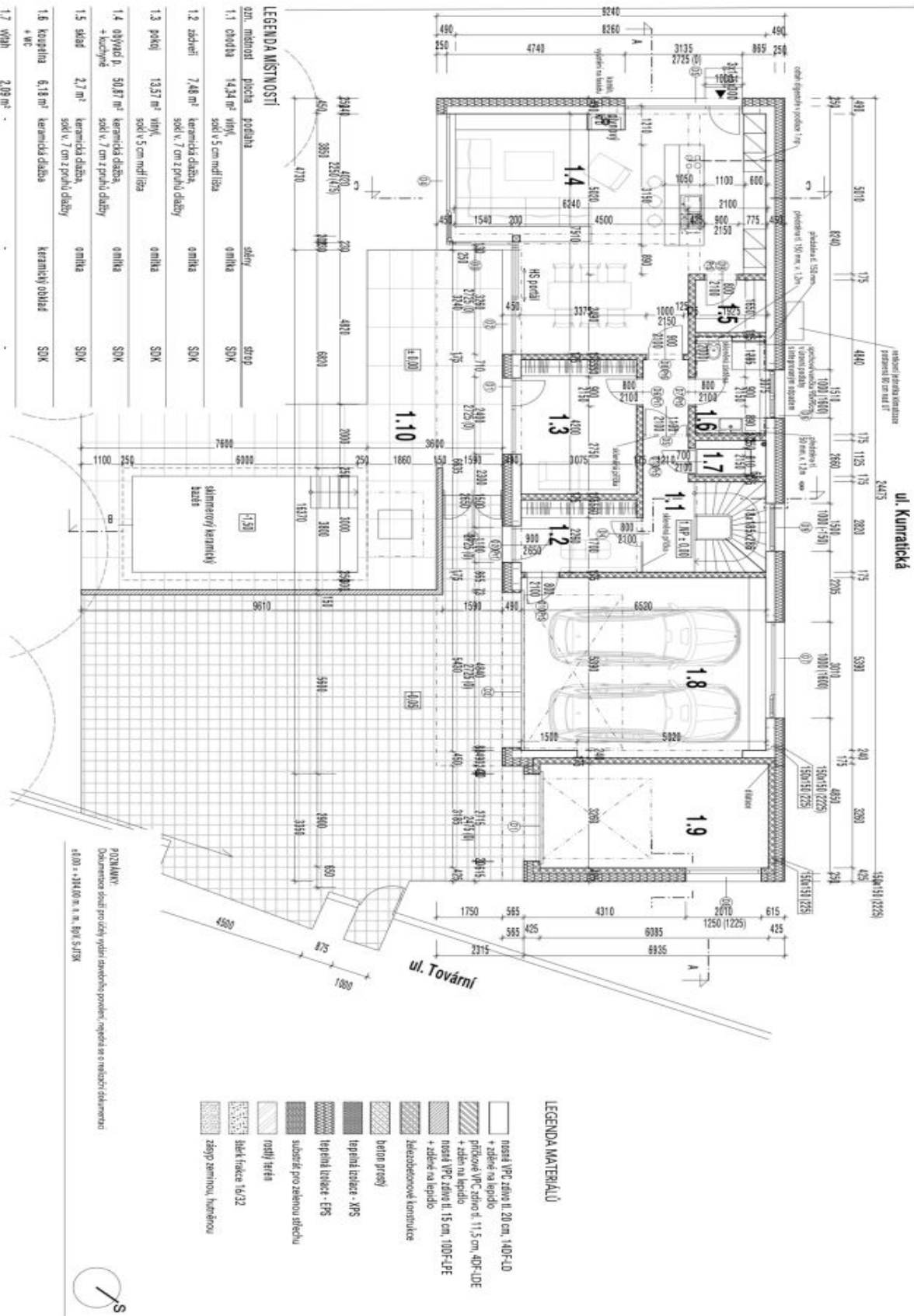
2.10 chodba	2,45 m <sup>2</sup>	vinyl	vápenatá omítka	SDK
2.11 šatna	3,8 m <sup>2</sup>	vinyl	vápenatá omítka	SDK
2.12 koupelna	5,5 m <sup>2</sup>	keramická dlažba	vápenatá omítka	SDK
2.13 pokoj	16,58 m <sup>2</sup>	vinyl	vápenatá omítka	SDK
2.14 pokoj	14,03 m <sup>2</sup>	vinyl	vápenatá omítka	SDK
2.15 stiecha	24,84 m <sup>2</sup>	keramická dlažba		
2.16 balkon	28,17 m <sup>2</sup>	keramická dlažba		
celková plocha	131,48 m <sup>2</sup>			
bez balkonů				

**PŮDORYS 2.NP**





celková plocha bazény	156,16 m <sup>2</sup>		
1.10 vřava	75,59 m <sup>2</sup>	keramická dlažba	
1.7 vřava	2,09 m <sup>2</sup>		
1.6 koupelna + WC	6,18 m <sup>2</sup>	keramická dlažba	keramický obklad SDX
1.8 garáž	38,58 m <sup>2</sup>	beton + epoxidová směs	omítka polířkový beton
1.9 dílna	19,87 m <sup>2</sup>	beton + epoxidová směs	omítka polířkový beton



PŮDORYS 1.NP

