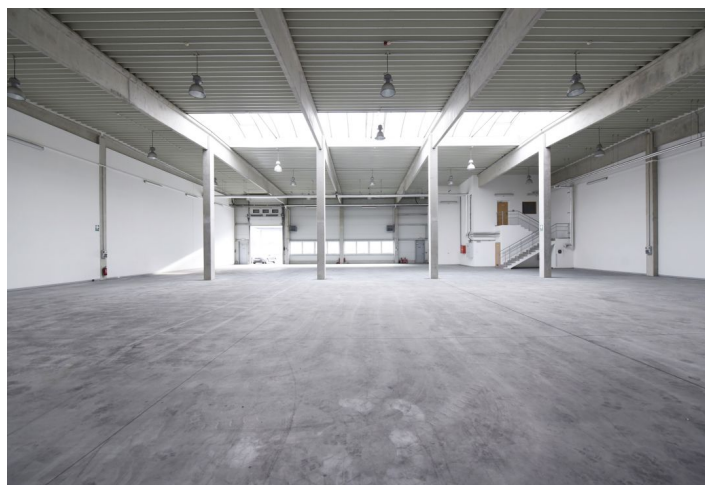




## Warehouse space

997 m<sup>2</sup>, Plzeň-město, Plzeň, Borská

Ask for price





## Warehouse space

997 m<sup>2</sup>, Plzeň-město, Plzeň, Borská

**Ask for price**

<b>Total area</b>	997 m <sup>2</sup>
<b>Ceiling height</b>	7 m
<b>Floor loading capacity</b>	5 t/m <sup>2</sup>
<b>Column grid structure</b>	—
<b>Structure</b>	Reinforced concrete structure
<b>PENB</b>	G
<b>Reference number</b>	38091

**884 sq.m.** of warehouse and **113 sq.m.** of office space for rent. The hall is divided into 8 separate parts, each with its own two-storey social and administrative building, where the offices, cloakrooms, social and technical facilities of the building are located. Modern spaces of category A. The premises are suitable for storage, logistics or light production, they can be adapted according to the client's requirements.

### Location:

The hall is located on the western edge of Pilsen in the established Škoda Plzeň complex. Year of construction 2008. It is accessible to the external communication network of the city of Pilsen and the D5 motorway. The entrance to the hall is from the south side, where there is an access road and a handling area. Easy transport by car, bus or train (Plzeň Skvrňany stop at the park area).

### Features and Services:

- Flexible units (warehouse / office / light production / showroom)
- Property management directly on the premises
- Secure entrance to the complex (24/7)
- Electronic security alarm
- Technical room with HV / LV substation
- Exchanger station connected to an external hot water supply
- Space for trucks to enter the hall
- Parking places

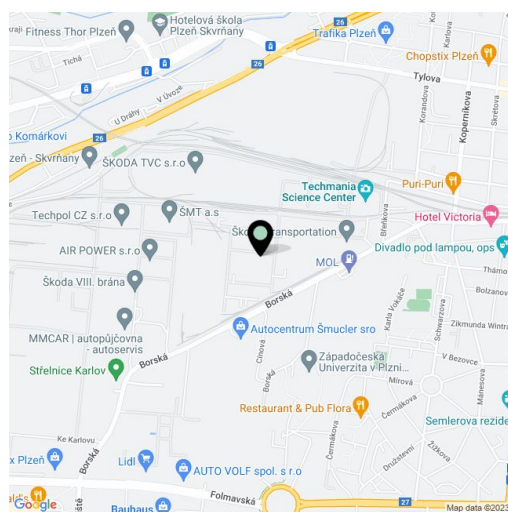
### Industrial/Warehouse space:

- Drive-in doors
- Floor loading capacity 5 t/sq.m.
- Clear height 7 m
- Column grid 12 m x 24 m
- Fluorescent and discharge lamps
- Daylight lighting of the hall is provided by skylights and the lower window strip
- Natural ventilation of the hall is performed by lower windows and skylights
- Gas hot air units

### Office:

- air conditioning is installed in the changing rooms and washrooms
- in offices it is ventilated naturally by windows
- heating with plate radiators

**Available from mid-April, 2021.**



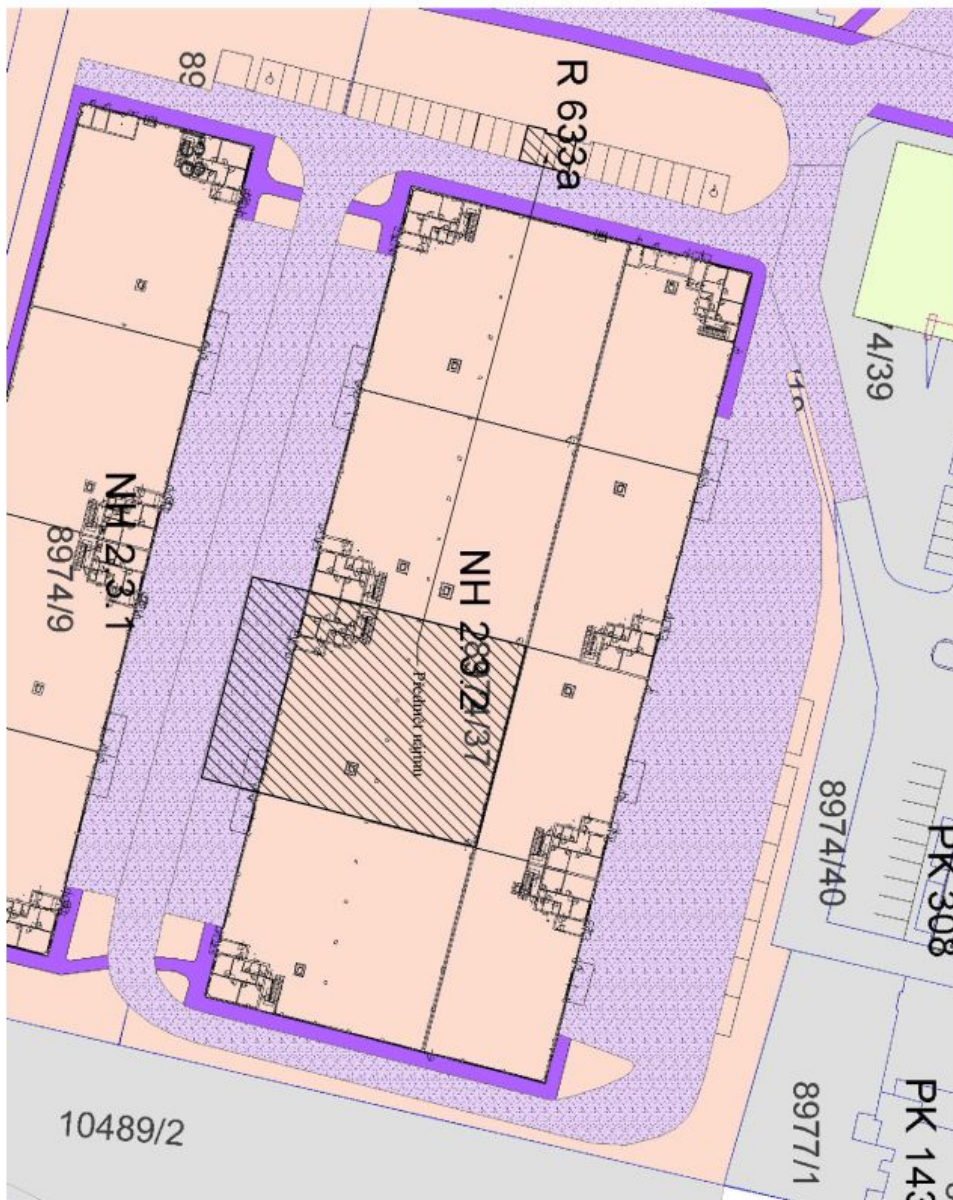




## Warehouse space

997 m<sup>2</sup>, Plzeň-město, Plzeň, Borská

Ask for price





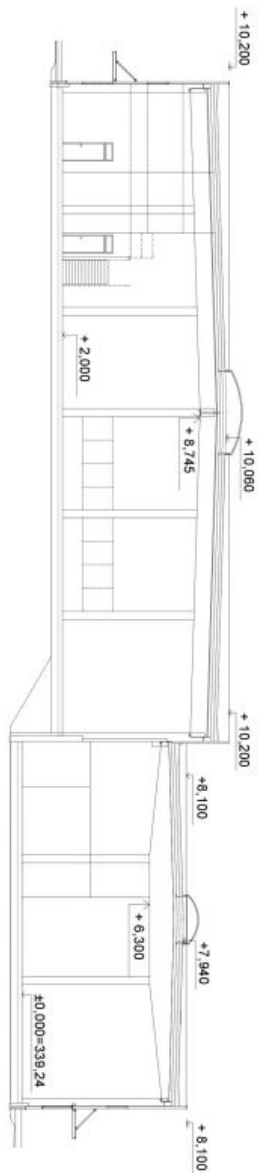
# Warehouse space

997 m<sup>2</sup>, Plzeň-město, Plzeň, Borská

Ask for price



VESTAVĚK A NH 2.3.2 - OFFICE RENTAL HALL 2.3.2



REZ C-C - CUT C-C

